

## Ecological site R028AY120UT Desert Gravelly Loam (Shadscale)

Accessed: 05/12/2025

### General information

**Provisional.** A provisional ecological site description has undergone quality control and quality assurance review. It contains a working state and transition model and enough information to identify the ecological site.

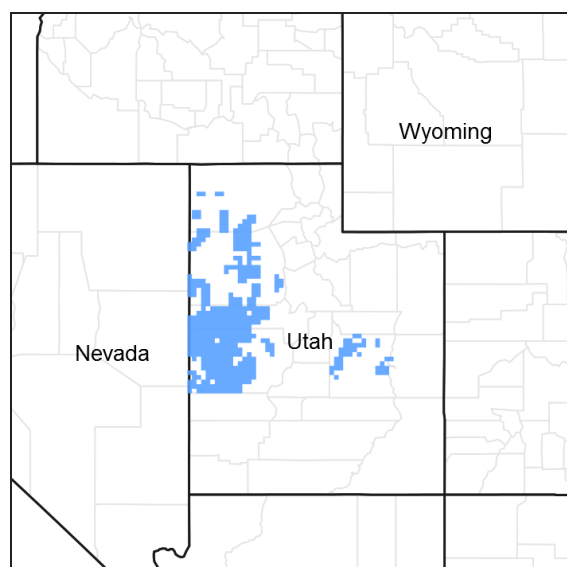


Figure 1. Mapped extent

Areas shown in blue indicate the maximum mapped extent of this ecological site. Other ecological sites likely occur within the highlighted areas. It is also possible for this ecological site to occur outside of highlighted areas if detailed soil survey has not been completed or recently updated.

### MLRA notes

Major Land Resource Area (MLRA): 028A—Ancient Lake Bonneville

This site occurs in MLRA 28A, LRU A, the northern part of MLRA 28A. This LRU has a mesic soil temperature regime and a typical aridic soil moisture regime. Typically most precipitation occurs in the winter. Mean annual precipitation is between 4 to 8 inches. The north desert ecological zone typically has no big sagebrush (*Artemisia tridentata* spp.), but typically is dominated by shadscale (*Atriplex confertifolia*), winterfat (*Krascheninnikovia lanata*), saltbushes (*Atriplex* spp), Indian ricegrass (*Achnatherum hymenoides*), and bottlebrush squirreltail (*Elymus elymoides*). Unlike the southern LRUs, there is typically very little if any galleta (*Pleuraphis jamesii*) grass.

### Classification relationships

MLRA 28A, LRU A, northern desert zone

### Ecological site concept

This site occurs on alluvial fans, fan remnants or terraces. It can be found on slopes between 0 and 15 percent in gravelly moam soils. Shadscale is typically dominant in reference condition.

### Associated sites

R028AY215UT	<b>Semidesert Gravelly Loam (Wyoming Big Sagebrush) North</b> R028AY234UT Semidesert Shallow Loam (Utah Juniper) is also an associated site.
-------------	---

## Similar sites

R028AY012NV	<b>LOAMY 5-8 P.Z.</b> This site is similar in soil characteristics and vegetation.
-------------	---

**Table 1. Dominant plant species**

Tree	Not specified
Shrub	Not specified
Herbaceous	Not specified

## Physiographic features

This site occurs on broad, nearly level hilltops, alluvial fans, fan remnants, terraces and lake terraces. It occurs between 4300 to 6000 feet on slopes between 0 to 15 percent. This site does not flood or pond water.

**Table 2. Representative physiographic features**

Landforms	(1) Alluvial fan (2) Fan remnant (3) Lake terrace
Flooding frequency	None
Ponding frequency	None
Elevation	4,300–6,000 ft
Slope	0–15%

## Climatic features

The climate is cold and snowy in the winter and warm and dry in the summer. The average annual precipitation is 5 to 8 inches. Approximately 70 percent comes as rain from March through October. On the average, June through September are the driest months and March through May are the wettest months.

Mean Annual Air Temperature: 46-53

Mean Annual Soil Temperature: 50-56

**Table 3. Representative climatic features**

Frost-free period (average)	114 days
Freeze-free period (average)	136 days
Precipitation total (average)	6 in

## Climate stations used

- (1) CALLAO [USC00421144], Wendover, UT
- (2) WENDOVER AP AWOS [USW00024193], Wendover, UT

## Influencing water features

Water does not flood or pond on this site.

## Soil features

Characteristic soils in this site are 60 inches deep and well to somewhat excessively drained. They formed in alluvium underlain by coarser sediments deposited by waves of the ancient lake derived mainly from limestone and calcareous sandstone parent materials. The surface horizon is moderately coarse textures and 6 inches thick. About 50 percent of the soil surface is covered by rock fragments. The volume of rock fragments in the soil profile is 35 to 70 percent.

These soils are calcareous throughout and have moderately rapid permeability. They are non-saline to slightly saline. The available water capacity is 2 to 3.5 inches.

Natural geologic erosion in potential is approximately 0.5 tons/acre/year.

**Table 4. Representative soil features**

Parent material	(1) Alluvium–limestone and sandstone
Surface texture	(1) Gravelly loam (2) Gravelly sandy loam (3) Gravelly fine sandy loam
Drainage class	Well drained to excessively drained
Permeability class	Moderately rapid
Soil depth	60 in
Surface fragment cover <=3"	19–28%
Surface fragment cover >3"	0–9%
Available water capacity (0-40in)	2.1–3.5 in
Calcium carbonate equivalent (0-40in)	5–50%
Electrical conductivity (0-40in)	0–4 mmhos/cm
Sodium adsorption ratio (0-40in)	0–60
Soil reaction (1:1 water) (0-40in)	7.9–9
Subsurface fragment volume <=3" (Depth not specified)	17–37%
Subsurface fragment volume >3" (Depth not specified)	0–9%

## Ecological dynamics

As ecological condition deteriorates due to overgrazing, galleta, Indian ricegrass, and winterfat decrease while shadscale, rabbitbrush, horsebrush and snakeweed increase.

When the potential natural plant community is burned, galleta, Indian ricegrass, winterfat, and shadscale decrease while rabbitbrush and native annual forbs increase.

Halogeton and cheatgrass are most likely to invade this site.

This site is similar to Nevada's 028AY012NV site. The state and transition model developed by Stringham et al. (2015) is used for the Utah ESD.

## State and transition model

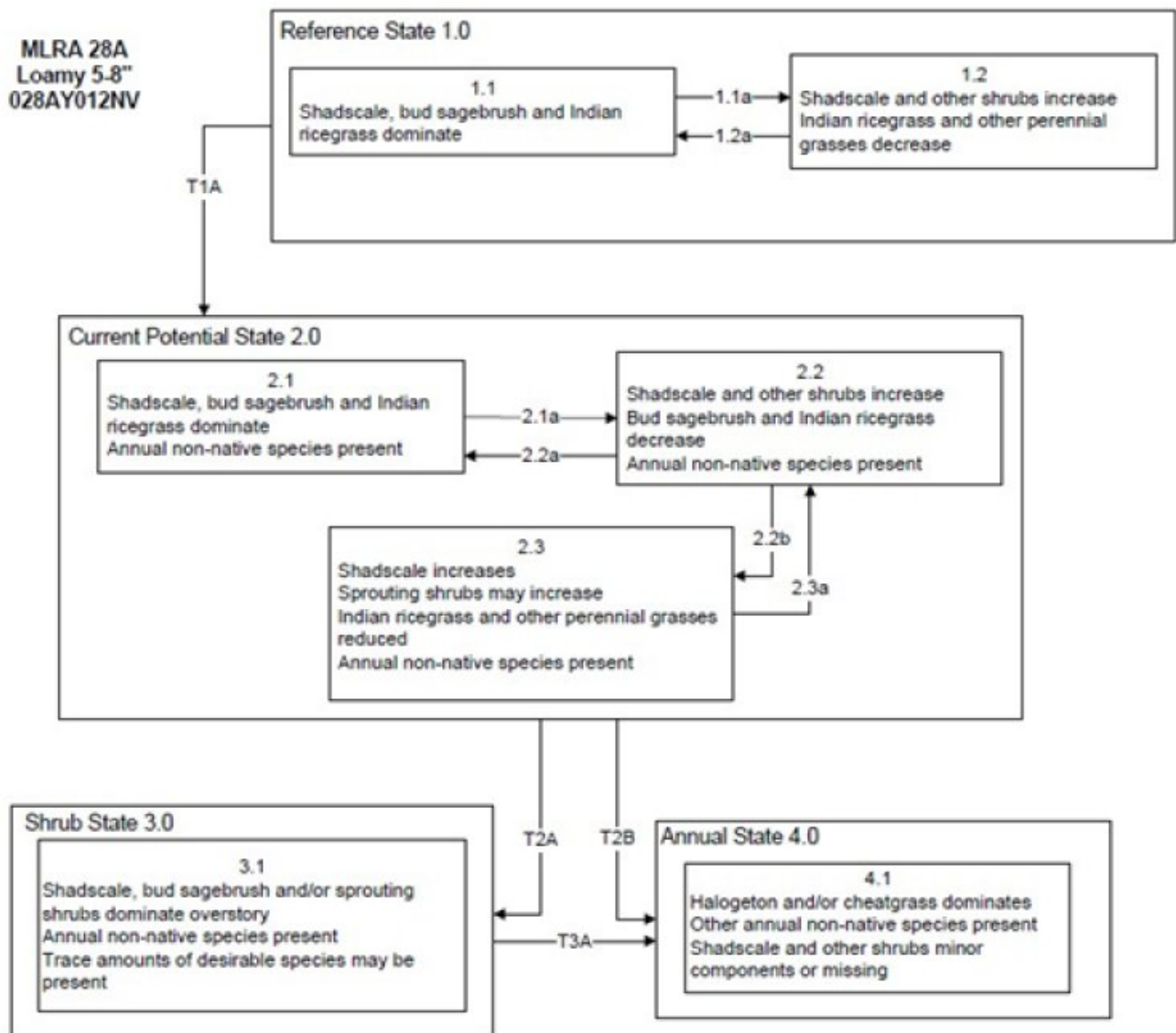


Figure 6. R028AY120UT STM

Reference State 1.0 Community Phase Pathways

- 1.1a: Prolonged drought and/or herbivory
- 1.2a: Release from drought and/or herbivory

Transition T1A: Introduction of non-native annual species such as halogeton.

Current Potential State 2.0 Community Phase Pathways

- 2.1a: Prolonged drought and/or inappropriate grazing management
- 2.2a: Release from drought and/or appropriate grazing management that allows for an increase in bud sagebrush, winterfat and perennial grasses. Extreme growing season moisture may reduce shadscale.
- 2.2b: Inappropriate grazing and/or drought
- 2.3a: Release from drought and/or inappropriate grazing management allows for an increase in budsage and perennial grasses. Extreme growing season moisture may reduce shadscale.

Transition T2A: Long-term inappropriate grazing management and/or long-term chronic drought.

Transition T2B: Soil disturbing treatments (drill seeding, roller chopper, Lawson aerator etc.), fire, and/or unusually wet spring.

Transition T3A: Soil disturbing treatments (drill seeding, roller chopper, Lawson aerator etc.), fire, and/or unusually wet spring.

Figure 7. R028AA120UT STM Legend

State 1  
Reference State

The Reference State 1.0 is a representative of the natural range of variability under pristine conditions. The Reference State has two general community phases: a shrub-grass dominate phase and a shrub dominant phase. State dynamics are maintained by interactions between climatic patterns and disturbance regimes. Negative feedbacks enhance ecosystem resilience and contribute to the stability of the state. These include the presence of all structural and functional groups, low fine fuel loads, and retention of organic matter and nutrients. This site is very stable, with little variation in plant community composition. Plant community changes would be reflected in production response to long term drought or herbivory. Wet years will increase grass production, while drought years will reduce production. Shrub production will also increase during wet years; however, extreme growing season wet periods has been shown to cause shadscale death.

Community 1.1  
Shadscale, Indian ricegrass

This community is dominated by shadscale, bud sagebrush and Indian ricegrass. Galleta grass and King’s desertgrass are minor components along with winterfat and bud sagebrush. Community phase changes are primarily a function of chronic drought. Drought will favor shrubs over perennial bunchgrasses. However, long-term drought will result in an overall decline in plant community production, regardless of functional group. Extreme growing season wet periods may also reduce the shadscale component. Fire is very infrequent to non-existent. The dominant aspect of the plant community is galleta grass. The composition by air dry weight is approximately 40 percent perennial grasses, 10 percent forbs, and 50 percent shrubs.

Table 5. Annual production by plant type

Plant Type	Low (Lb/Acre)	Representative Value (Lb/Acre)	High (Lb/Acre)
Shrub/Vine	125	188	250
Grass/Grasslike	100	150	200
Forb	25	37	50
Total	250	375	500

Table 6. Ground cover

Tree foliar cover	0%
-------------------	----

Shrub/vine/liana foliar cover	10-30%
Grass/grasslike foliar cover	10-20%
Forb foliar cover	2-5%
Non-vascular plants	0%
Biological crusts	0%
Litter	0%
Surface fragments >0.25" and <=3"	0%
Surface fragments >3"	0%
Bedrock	0%
Water	0%
Bare ground	0%

**Table 7. Canopy structure (% cover)**

Height Above Ground (Ft)	Tree	Shrub/Vine	Grass/ Grasslike	Forb
<0.5	—	—	—	—
>0.5 <= 1	—	—	—	0-10%
>1 <= 2	—	25-35%	15-25%	—
>2 <= 4.5	—	—	—	—
>4.5 <= 13	—	—	—	—
>13 <= 40	—	—	—	—
>40 <= 80	—	—	—	—
>80 <= 120	—	—	—	—
>120	—	—	—	—

**Figure 9. Plant community growth curve (percent production by month).  
UT1201, PNC. Excellent Condition.**

Jan	Feb	Mar	Apr	May	Jun	Jul	Aug	Sep	Oct	Nov	Dec
0	0	5	25	50	10	0	0	5	5	0	0

## Community 1.2 Shadscale

Shrubs such as shadscale and bud sagebrush increase in the community. Perennial bunchgrasses decrease with drought and may become a minor component.

### Pathway 1.1a Community 1.1 to 1.2

Long-term drought, extreme wet periods and/or herbivory. Drought will favor shrubs over perennial bunchgrasses. Extreme wet periods will reduce the shadscale component.

### Pathway 1.2a Community 1.2 to 1.1

Release from drought and/or herbivory would allow the vegetation to increase and bare ground would eventually decrease. Extreme growing season wet period may reduce shadscale.

## **State 2**

### **Current Potential State**

This state is similar to the Reference State 1.0. with the addition of a shadscale and sprouting shrub dominated community phase. Ecological function has not changed, however the resiliency of the state has been reduced by the presence of invasive weeds. Non-natives may increase in abundance but will not become dominant within this State. These non-natives can be highly flammable and can promote fire where historically fire had been infrequent. Negative feedbacks enhance ecosystem resilience and contribute to the stability of the state. These feedbacks include the presence of all structural and functional groups, low fine fuel loads, and retention of organic matter and nutrients. Positive feedbacks decrease ecosystem resilience and stability of the state. These include the non-natives' high seed output, persistent seed bank, rapid growth rate, ability to cross pollinate, and adaptations for seed dispersal.

### **Community 2.1**

#### **Shadscale, bud sagebrush, Indian ricegrass**

This community is compositionally similar to the Reference State Community Phase 1.1 with the presence of non-native species in trace amounts. This community is dominated by shadscale and Indian ricegrass. Galleta grass, bud sagebrush and winterfat are also important species on this site. Community phase changes are primarily a function of chronic drought or extreme wet periods. Fire is infrequent and patchy due to low fuel loads.

### **Community 2.2**

#### **Shadscale, other shrubs**

Shadscale and rabbitbrush increase while Indian ricegrass and bud sagebrush decline. Bare ground increases along with annual weeds. Prolonged drought may lead to an overall decline in the plant community. Galleta grass may increase. Wet periods will decrease the shadscale component.

### **Community 2.3**

#### **Shadscale, other shrubs, annual non-natives**

Shadscale and rabbitbrush dominates the overstory and perennial bunchgrasses, winterfat and bud sagebrush are reduced, either from competition with shrubs or from inappropriate grazing, chronic drought or both. Galleta may increase. Annual non-native species may be stable or increasing due to a lack of competition with perennial bunchgrasses. Bare ground may be significant. This community is at risk of crossing a threshold to either State 3.0 (shrub) or State 4.0 (annual).

### **Pathway 2.1a**

#### **Community 2.1 to 2.2**

Inappropriate growing season grazing favors unpalatable shrubs over bunchgrasses, winterfat and bud sagebrush. Long term drought will also decrease the perennial bunchgrasses in the understory.

### **Pathway 2.2a**

#### **Community 2.2 to 2.1**

Release from drought and/or appropriate grazing management that facilitates an increase in perennial grasses, winterfat and bud sagebrush. Extreme growing season wet period may reduce shadscale.

### **Pathway 2.2b**

#### **Community 2.2 to 2.3**

Long term drought and/or inappropriate grazing will significantly reduce perennial grasses, winterfat and bud sagebrush in favor of shadscale and rabbitbrush.

## **State 3**

## **Shrub State**

This state has one community phase that is characterized by shadscale, bud sagebrush or a sprouting shrub overstory with very little to no understory. The site has crossed a biotic threshold and site processes are being controlled by shrubs. Shrub cover exceeds the site concept and may be decadent, reflecting stand maturity and lack of seedling establishment due to competition with mature plants. The shrub overstory dominates site resources such that soil water, nutrient capture, nutrient cycling and soil organic matter are temporally and spatially redistributed. Bare ground has increased.

### **Community 3.1**

#### **Shadscale, other shrubs, annual non-natives**

Decadent shadscale and bud sagebrush dominate the overstory. Rabbitbrush and/or other sprouting shrubs may be a significant component or dominant shrub. Deep-rooted perennial bunchgrasses may be present in trace amounts or absent from the community. Annual nonnative species increase. Bare ground is significant.

## **State 4**

### **Annual State**

This state has one community phase. In this state, a biotic threshold has been crossed and state dynamics are driven by the dominance and persistence of the annual plant community which is perpetuated by a shortened fire return interval. The herbaceous understory is dominated by annual non-native species such as cheatgrass and halogeton. Bare ground may be abundant. Resiliency has declined and further degradation from fire facilitates a cheatgrass and sprouting shrub plant community. The fire return interval has shortened due to the dominance of cheatgrass in the understory and is a driver in site dynamics.

### **Community 4.1**

#### **Halogeton, cheatgrass**

This community is dominated by annual non-native species. Halogeton most commonly invades these sites. Trace amounts of shadscale and other shrubs may be present, but are not contributing to site function. Bare ground may be abundant, especially during low precipitation years. Soil erosion from wind and soil temperature are driving factors in site function.

## **Transition T1A**

### **State 1 to 2**

Trigger: This transition is caused by the introduction of non-native annual plants, such as halogeton, mustards and cheatgrass. Slow variables: Over time the annual non-native species will increase within the community. Threshold: Any amount of introduced non-native species causes an immediate decrease in the resilience of the site. Annual non-native species cannot be easily removed from the system and have the potential to significantly alter disturbance regimes from their historic range of variation.

## **Transition T2A**

### **State 2 to 3**

Trigger: Long-term inappropriate grazing and/or long-term drought will decrease or eliminate deep rooted perennial bunchgrasses and favor shrub growth and establishment. Slow variables: Long term decrease in deep-rooted perennial grass density. Threshold: Loss of deep-rooted perennial bunchgrasses changes nutrient cycling, nutrient redistribution, and reduces soil organic matter.

## **Transition T2B**

### **State 2 to 4**

Trigger: Fire and/or soil disturbing treatments such as drill seeding and plowing. An unusually wet spring may facilitate the increased germination and production of cheatgrass leading to its dominance within the community. Slow variables: Increased production and cover of non-native annual species. Threshold: Loss of deep-rooted perennial bunchgrasses and shrubs truncates, spatially and temporally, nutrient capture and cycling within the



community. Increased, continuous fine fuels from annual non-native plants modify the fire regime by changing intensity, size and spatial variability of fires.

**Transition T3A**  
**State 3 to 4**

Trigger: Fire and/or soil disturbing treatments such as drill seeding and plowing. Slow variables: Increased production and cover of non-native annual species. Threshold: Increased, continuous fine fuels modify the fire regime by changing intensity, size and spatial variability of fires. Changes in plant community composition and spatial variability of vegetation due to the loss of perennial bunchgrasses and sagebrush truncate energy capture spatially and temporally thus impacting nutrient cycling and distribution.

**Additional community tables**

Table 8. Community 1.1 plant community composition

Group	Common Name	Symbol	Scientific Name	Annual Production (Lb/Acre)	Foliar Cover (%)
<b>Shrub/Vine</b>					
0	<b>Primary Shrubs</b>			136–220	
	shadscale saltbush	ATCO	<i>Atriplex confertifolia</i>	60–80	–
	bud sagebrush	PIDE4	<i>Picrothamnus desertorum</i>	20–40	–
	Nuttall's horsebrush	TENU2	<i>Tetradymia nuttallii</i>	20–40	–
	Nevada jointfir	EPNE	<i>Ephedra nevadensis</i>	20–40	–
	winterfat	KRLA2	<i>Krascheninnikovia lanata</i>	12–20	–
	yellow rabbitbrush	CHVI8	<i>Chrysothamnus viscidiflorus</i>	12–20	–
3	<b>Secondary Shrubs</b>			12–20	
	pygmy sagebrush	ARPY2	<i>Artemisia pygmaea</i>	4–12	–
	fourwing saltbush	ATCA2	<i>Atriplex canescens</i>	4–12	–
	broom snakeweed	GUSA2	<i>Gutierrezia sarothrae</i>	4–12	–
	desert polygala	POAC2	<i>Polygala acanthoclada</i>	4–12	–
<b>Grass/Grasslike</b>					
0	<b>Primary Grasses</b>			132–180	
	James' galleta	PLJA	<i>Pleuraphis jamesii</i>	80–100	–
	Indian ricegrass	ACHY	<i>Achnatherum hymenoides</i>	40–60	–
	squirreltail	ELEL5	<i>Elymus elymoides</i>	12–20	–
1	<b>Secondary Grasses</b>			12–20	
	purple threeawn	ARPU9	<i>Aristida purpurea</i>	4–12	–
	needle and thread	HECO26	<i>Hesperostipa comata</i>	4–12	–
	saline wildrye	LESAS	<i>Leymus salinus ssp. salinus</i>	4–12	–
	Sandberg bluegrass	POSE	<i>Poa secunda</i>	4–12	–
	alkali sacaton	SPAI	<i>Sporobolus airoides</i>	4–12	–
	sand dropseed	SPCR	<i>Sporobolus cryptandrus</i>	4–12	–
<b>Forb</b>					
2	<b>Forbs</b>			20–40	
	Torrey's milkvetch	ASCA9	<i>Astragalus calycosus</i>	12–20	–
	shaggy fleabane	ERPU2	<i>Erigeron pumilus</i>	12–20	–
	low beardtongue	PEHU	<i>Penstemon humilis</i>	12–20	–
	spiny phlox	PHHO	<i>Phlox hoodii</i>	12–20	–
	scarlet globemallow	SPCO	<i>Sphaeralcea coccinea</i>	12–20	–

## Animal community

This site is suited for sheep and cattle grazing during spring, fall, and winter.

Wildlife using this site include rabbit, coyote, fox, pronghorn antelope, and mule deer (seasonal).

This is a short list of the more common species found. Many other species are present as well and migratory birds are present at times.

## Hydrological functions

The soils are in hydrologic group B with runoff curves ranging from 61 to 79 depending on hydrologic condition.

## Recreational uses

Resources that have special aesthetic and landscape value are wildflowers. Some recreation uses of this site are hiking and hunting..

## Wood products

None

## Other information

Threatened and endangered species include plants and animals.

## Type locality

Location 1: Box Elder County, UT	
Township/Range/Section	T10N R14W S34
General legal description	Western part of Box Elder County at Red Dome NW ¼, NW ¼ Section 34, Township 10N, Range 14W. South of Fish Springs Juab County, Utah. Tooele Army Depot, South Rush Valley, Utah.

## Other references

Stringham, T.K., P. Novak-Echenique, P. Blackburn, C. Coombs, D. Snyder, and A. Wartgow. 2015. Final Report for USDA Ecological Site Description State-and Transition Models, Major Land Resource Area 28A and 28B Nevada. University of Nevada Reno, Nevada Agricultural Experiment Station Research Report 2015-01. p. 1524.

## Contributors

David J. Somorville  
DJS  
Patti Novak Echenique  
Tamzen Stringham

## Rangeland health reference sheet

Interpreting Indicators of Rangeland Health is a qualitative assessment protocol used to determine ecosystem condition based on benchmark characteristics described in the Reference Sheet. A suite of 17 (or more) indicators are typically considered in an assessment. The ecological site(s) representative of an assessment location must be known prior to applying the protocol and must be verified based on soils and climate. Current plant community cannot be used to identify the ecological site.

Author(s)/participant(s)	V. Keith Wadman (NRCS Ret.), Shane A. Green (NRCS)
Contact for lead author	shane.green@ut.usda.gov
Date	01/10/2009
Approved by	Shane A. Green
Approval date	
Composition (Indicators 10 and 12) based on	Annual Production

## Indicators

1. **Number and extent of rills:** Very minor rill development may be evident in the reference community following significant storm or snow melt events. The presence of rills may be more apparent where run-on from adjacent upland sites or

exposed bedrock concentrate flows. Any rill development will be short (< 3') and widely spaced (10' – 15'). Evidence of rills will decrease in the months following major weather events as they heal. Potential rill development may be masked by significant concentrations (35 - 60%) of coarse fragments on the soil surface.

---

2. **Presence of water flow patterns:** Some evidence of stable overland water flow is apparent in the reference community; increased flow activity may be observed immediately following significant weather events. Flow patterns are normally <20 feet long, follow natural contours, and are typically spaced 10 to 15 feet apart.

---

3. **Number and height of erosional pedestals or terracettes:** Pedestals or terracettes caused by accelerated water erosion are not typically evident in the reference community. 1 – 2 inches of depositional mounding in perennial grass clumps and under Shadscale canopies is normal and may not be water erosion caused.

---

4. **Bare ground from Ecological Site Description or other studies (rock, litter, lichen, moss, plant canopy are not bare ground):** Bare ground ranges from 10% - 20% in the reference community. Ground cover (the inverse of bare ground) typically includes: rock fragments – 35% to 60%; plant canopy – 20% to 30%; litter – 10% to 20%.

---

5. **Number of gullies and erosion associated with gullies:** Few. Some gully channels are a normal component of desert environments. Gullies associated with reference areas will typically have stable, partially vegetated sides and bottoms with no evidence of head-cutting. Some evidence of disturbance may be evident following significant weather events or when gullies convey runoff from higher elevation rocky or naturally eroding areas.

---

6. **Extent of wind scoured, blowouts and/or depositional areas:** Evidence of wind generated soil movement is rare in reference communities. Slight depositional mounding in perennial grass bunches and under Shadscale canopies is a normal characteristic of this site.

---

7. **Amount of litter movement (describe size and distance expected to travel):** Most litter resides in place within or under plant canopies. Some movement of the finest material (< 1/8" or less) may move (1' – 2') in the direction of prevailing winds or down slope if being transported by water. Little accumulation is observed behind obstructions.

---

8. **Soil surface (top few mm) resistance to erosion (stability values are averages - most sites will show a range of values):** This site should have a soil stability rating of 4 to 5. Surface textures are typically sandy loams containing 35 to 60% rock fragments.

---

9. **Soil surface structure and SOM content (include type of structure and A-horizon color and thickness):** Soil surface is 3 - 4 inches deep and structure varies from weak, thin to medium platy. The A-horizon color is typically 10YR 6/2. Soils have an Ochric epipedon that extends 3 – 4 inches into the soil profile. The A horizon is normally deeper and better developed under plant canopies. Where surface soil is lost, increased clay and silt percentages are common in the remaining soil material.

---

10. **Effect of community phase composition (relative proportion of different functional groups) and spatial**

**distribution on infiltration and runoff:** The presence of perennial grasses and Shadscale in the reference community provides for the best infiltration and least runoff from storm events and snow melt. As perennial vegetation decreases and bare ground increases, runoff increases and soil loss is accelerated. Rock fragments armor the soil surface and slowing infiltration.

---

11. **Presence and thickness of compaction layer (usually none; describe soil profile features which may be mistaken for compaction on this site):** None. Soils are deep to very deep. Increases in clay or silt content in subsoil layers could be mistaken for compaction.
- 

12. **Functional/Structural Groups (list in order of descending dominance by above-ground annual-production or live foliar cover using symbols: >>, >, = to indicate much greater than, greater than, and equal to):**

Dominant: Dominant: Non-sprouting shrubs (e.g. Shadscale and Bud sage) 20 – 30%, > warm season perennial grasses (e.g. James galleta and Sand dropseed) 10 – 20%, > tall cool season grasses (e.g. Indian ricegrass and Bottlebrush squirreltail) 5 – 15%.

Sub-dominant: Sub-dominant: Sprouting shrubs (e.g. Nuttall horsebrush, Nevada jointfir and Winterfat) 5 - 10% > short Cool season grasses (e.g. Bottlebrush squirreltail, Sandberg and Nevada bluegrasses) 3 - 5%.

Other: Others: Shrubs (e.g. Low rabbitbrush and Four-wing saltbush) 1-3%, perennial forbs (e.g. Scarlet globemallow and Carpet phlox) 3-5%, biological crusts (e.g. lichens, mosses, cyanobacteria) trace%.

Additional: Moss and lichen communities will normally be found under plant canopies while the cyanobacteria will be found throughout the site. Functional/structural groups may appropriately contain non-native species if their ecological function is the same as the native species in the reference state. Perennial and annual forbs can be expected to vary widely in their expression in the plant community based upon departures from average growing conditions.

---

13. **Amount of plant mortality and decadence (include which functional groups are expected to show mortality or decadence):** During years with average to above-average precipitation, there should be very little recent mortality or decadence apparent in either the shrubs or grasses. During severe (multi-year) drought or insect infestations up to 80% of the shadscale may die. There may be partial mortality of individual bunchgrasses and other shrubs during severe drought.
- 

14. **Average percent litter cover (%) and depth ( in):** Litter cover ranges from 10 to 20% with a spike when Bud Sage and Shadscale drops its leaves. Depth varies from ¼ - ¾ inch with depth increasing near plant canopies.
- 

15. **Expected annual annual-production (this is TOTAL above-ground annual-production, not just forage annual-production):** 350 – 400 pounds on an average year.
- 

16. **Potential invasive (including noxious) species (native and non-native). List species which BOTH characterize degraded states and have the potential to become a dominant or co-dominant species on the ecological site if their future establishment and growth is not actively controlled by management interventions. Species that become dominant for only one to several years (e.g., short-term response to drought or wildfire) are not invasive plants. Note that unlike other indicators, we are describing what is NOT expected in the reference state for the ecological site:** Broom snakeweed, Russian thistle, Redstem storksbill, annual bromes and Halogeton are likely

to increase in or invade this site.

---

17. **Perennial plant reproductive capability:** All perennial plant species have the ability to reproduce in most years except drought years.
-