

## Ecological site R028BY043NV CALCAREOUS MAHOAGANY SAVANNA

Accessed: 05/12/2025

### General information

**Provisional.** A provisional ecological site description has undergone quality control and quality assurance review. It contains a working state and transition model and enough information to identify the ecological site.

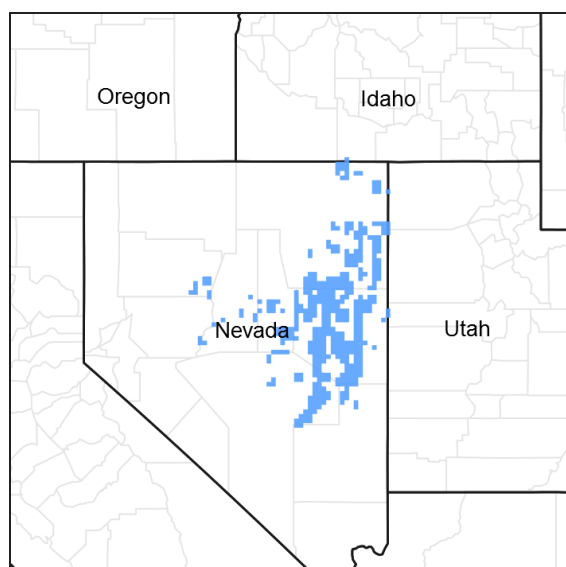


Figure 1. Mapped extent

Areas shown in blue indicate the maximum mapped extent of this ecological site. Other ecological sites likely occur within the highlighted areas. It is also possible for this ecological site to occur outside of highlighted areas if detailed soil survey has not been completed or recently updated.

### MLRA notes

Major Land Resource Area (MLRA): 028B—Central Nevada Basin and Range

MLRA 28B occurs entirely in Nevada and comprises about 23,555 square miles (61,035 square kilometers). More than nine-tenths of this MLRA is federally owned. This area is in the Great Basin Section of the Basin and Range Province of the Intermontane Plateaus. It is an area of nearly level, aggraded desert basins and valleys between a series of mountain ranges trending north to south. The basins are bordered by long, gently sloping to strongly sloping alluvial fans. The mountains are uplifted fault blocks with steep sideslopes. Many of the valleys are closed basins containing sinks or playas. Elevation ranges from 4,900 to 6,550 feet (1,495 to 1,995 meters) in the valleys and basins and from 6,550 to 11,900 feet (1,995 to 3,630 meters) in the mountains.

The mountains in the southern half are dominated by andesite and basalt rocks that were formed in the Miocene and Oligocene. Paleozoic and older carbonate rocks are prominent in the mountains to the north. Scattered outcrops of older Tertiary intrusives and very young tuffaceous sediments are throughout this area. The valleys consist mostly of alluvial fill, but lake deposits are at the lowest elevations in the closed basins. The alluvial valley fill consists of cobbles, gravel, and coarse sand near the mountains in the apex of the alluvial fans. Sands, silts, and clays are on the distal ends of the fans.

The average annual precipitation ranges from 4 to 12 inches (100 to 305 millimeters) in most areas on the valley floors. Average annual precipitation in the mountains ranges from 8 to 36 inches (205 to 915 millimeters) depending on elevation. The driest period is from midsummer to midautumn. The average annual temperature is 34 to 52 degrees F (1 to 11 degrees C). The freeze-free period averages 125 days and ranges from 80 to 170 days, decreasing in length with elevation.

The dominant soil orders in this MLRA are Aridisols, Entisols, and Mollisols. The soils in the area dominantly have a mesic soil temperature regime, an aridic or xeric soil moisture regime, and mixed or carbonatic mineralogy. They generally are well drained, loamy or loamyskeletal, and shallow to very deep.

Nevada's climate is predominantly arid, with large daily ranges of temperature, infrequent severe storms and heavy snowfall in the higher mountains. Three basic geographical factors largely influence Nevada's climate:

continentality, latitude, and elevation. The strong continental effect is expressed in the form of both dryness and large temperature variations. Nevada lies on the eastern, lee side of the Sierra Nevada Range, a massive mountain barrier that markedly influences the climate of the State. The prevailing winds are from the west, and as the warm moist air from the Pacific Ocean ascend the western slopes of the Sierra Range, the air cools, condensation occurs and most of the moisture falls as precipitation. As the air descends the eastern slope, it is warmed by compression, and very little precipitation occurs. The effects of this mountain barrier are felt not only in the West but throughout the state, as a result the lowlands of Nevada are largely desert or steppes.

The temperature regime is also affected by the blocking of the inland-moving maritime air. Nevada sheltered from maritime winds, has a continental climate with well-developed seasons and the terrain responds quickly to changes in solar heating. Nevada lies within the midlatitude belt of prevailing westerly winds which occur most of the year. These winds bring frequent changes in weather during the late fall, winter and spring months, when most of the precipitation occurs.

To the south of the mid-latitude westerlies, lies a zone of high pressure in subtropical latitudes, with a center over the Pacific Ocean. In the summer, this high-pressure belt shifts northward over the latitudes of Nevada, blocking storms from the ocean. The resulting weather is mostly clear and dry during the summer and early fall, with occasional thundershowers. The eastern portion of the state receives noteworthy summer thunderstorms generated from monsoonal moisture pushed up from the Gulf of California, known as the North American monsoon. The monsoon system peaks in August and by October the monsoon high over the Western U.S. begins to weaken and the precipitation retreats southward towards the tropics (NOAA 2004).

## Ecological site concept

This site occurs on mountain sideslopes. Slope gradients of 15 to 50 percent are typical. Elevations are 7500 to 10,500 feet.

The soils in this site are moderately deep to bedrock, well drained and formed in colluvium and residuum derived from mixed parent material. The soils have a mollic epipedon and are skeletal with >35% rock fragments by volume distributed throughout the profile. Available water holding capacity is moderate. Runoff is high to very high.

The reference state is dominated by curleaf mountain mahogany. Mountain big sagebrush is the principal understory shrub. Bluebunch wheatgrass, western needlegrass, Columbia needlegrass and Letterman's needlegrass are the most prevalent understory grasses. Total overstory canopy cover is less than 50 percent. Understory vegetation comprises about 20% of the total site production. Average annual understory production ranges from 600 to 1000 pounds per acre.

## Associated sites

F028BY062NV	<b>PIMO-JUOS/ARTRV/PSSPS-ACTH7</b>
F028BY076NV	<b>Cobbly Mountain Slopes 12-16 PZ</b>
R028BY070NV	<b>MOUNTAIN LOAM 16+ P.Z.</b>
R028BY085NV	<b>CALCAREOUS LOAM 16+ P.Z.</b>
R028BY088NV	<b>CALCAREOUS LOAM 14-16 P.Z.</b>

## Similar sites

R028BY032NV	<b>STONY MAHOGANY SAVANNA</b> Overstory canopy of CELE3 less than 35 percent; less productive understory
R028BY042NV	<b>MAHOGANY THICKET</b> Overstory canopy of CELE3 more than 50 percent; more productive site

Table 1. Dominant plant species

Tree	(1) <i>Cercocarpus ledifolius</i>
Shrub	(1) <i>Artemisia tridentata subsp. vaseyana</i>
Herbaceous	(1) <i>Pseudoroegneria spicata</i> (2) <i>Achnatherum</i>

## Physiographic features

This site occurs on mountain sideslopes. Slopes range from 8 to 75 percent, but slope gradients of 15 to 50 percent are most typical. Elevations range from approximately 7500 to 10,500 feet.

**Table 2. Representative physiographic features**

Landforms	(1) Mountain (2) Mountain slope
Flooding frequency	None
Ponding frequency	None
Elevation	2,286–3,200 m
Slope	15–50%
Aspect	Aspect is not a significant factor

## Climatic features

The climate associated with this site is semiarid, characterized by cold, moist winters and warm, dry summers.

Average annual precipitation ranges from 14 to 22 inches. Mean annual air temperature is about 41 to 44 degrees F. The average growing season is about 60 to 90 days. Weather stations with a long term data record are currently not available for this ecological site. Associated climate data will be updated when information becomes available.

**Table 3. Representative climatic features**

Frost-free period (average)	60 days
Freeze-free period (average)	90 days
Precipitation total (average)	406 mm

## Influencing water features

Influencing water features are not associated with this site.

## Soil features

The soils in this site are moderately deep to bedrock, well drained and formed in residuum and colluvium derived from mixed parent material. The soils have a pachic mollic epipedon that extends to bedrock and are skeletal with >35% rock fragments distributed throughout the profile. Available water holding capacity is moderate. The soil temperature regime ranges from frigid to cryic and the soil moisture regime is xeric. The soil series associated with this site include: Grink, Haunchee, Labshaft, Suak, Xine, and Zarark.

The representative soil series is Zarak (NV778 MU4364), classified as a Loamy-skeletal, carbonatic Pachic Calcicryolls. Diagnostic horizons include a mollic epipedon from the soil surface to 70cm and a calcic horizon from 10 to 70cm. Depth to bedrock is about 70cm. Clay content in the particle size control sections average 10 to 18 percent. Rock fragments range from 40 to 60 percent, mainly gravel. Reaction is slightly alkaline to moderately alkaline. Soils are slightly effervescent to violently effervescent increasing with depth and are derived from limestone and calcareous sandstone.

**Table 4. Representative soil features**

Parent material	(1) Colluvium–limestone (2) Residuum–calcareous sandstone
Surface texture	(1) Very gravelly loam (2) Very stony loam
Family particle size	(1) Loamy
Drainage class	Well drained to somewhat excessively drained
Permeability class	Very slow to moderately rapid
Soil depth	51–102 cm
Surface fragment cover ≤3"	20–30%
Surface fragment cover >3"	20–30%
Available water capacity (0–101.6cm)	2.29–5.59 cm
Calcium carbonate equivalent (0–101.6cm)	25–60%
Electrical conductivity (0–101.6cm)	0–2 mmhos/cm
Sodium adsorption ratio (0–101.6cm)	0
Soil reaction (1:1 water) (0–101.6cm)	7.5–8.1
Subsurface fragment volume ≤3" (Depth not specified)	40–30%
Subsurface fragment volume >3" (Depth not specified)	0–15%

## Ecological dynamics

An ecological site is the product of all the environmental factors responsible for its development and it has a set of key characteristics that influence a site's resilience to disturbance and resistance to invasives. Key characteristics include 1) climate (precipitation, temperature), 2) topography (aspect, slope, elevation, and landform), 3) hydrology (infiltration, runoff), 4) soils (depth, texture, structure, organic matter), 5) plant communities (functional groups, productivity), and 6) natural disturbance regime (fire, herbivory, etc.) (Caudle et al. 2013). Biotic factors that influence resilience include site productivity, species composition and structure, and population regulation and regeneration (Chambers et al. 2013).

The Great Basin vegetative communities have high spatial and temporal variability in precipitation both among years and within growing seasons. Nutrient availability is typically low but increases with elevation and closely follows moisture availability. The moisture resource supporting the greatest amount of plant growth is usually the water stored in the soil profile during the winter. The invasibility of plant communities is often linked to resource availability. Disturbance can decrease resource uptake due to damage or mortality of the native species and depressed competition or can increase resource uptake by the decomposition of dead plant material following disturbance. The invasion of cheatgrass has been linked to disturbances (fire, abusive grazing) that have resulted in fluctuations in resources (Chambers et al 2007). Dobrowolski et al. (1990) cite multiple authors on the extent of the soil profile exploited by the competitive exotic annual cheatgrass. Specifically, the depth of rooting is dependent on the size the plant achieves and in competitive environments cheatgrass roots were found to penetrate only 15 cm whereas isolated plants and pure stands were found to root at least 1 m in depth with some plants rooting as deep as 1.5 to 1.7 m.

The ecological site is dominated by the long-lived curleaf mountain mahogany, deep-rooted cool season perennial bunchgrasses, and long-lived shrubs (50+ years) with high root to shoot ratios. The dominant shrubs usually root to the full depth of the winter-spring soil moisture recharge, which ranges from 1.0 to over 3.0 m. (Comstock and Ehleringer 1992). Root length of mature sagebrush plants was measured to a depth of 2 meters in alluvial soils in Utah (Richards and Caldwell 1987). These shrubs have a flexible generalized root system with development of both

deep taproots and laterals near the surface (Comstock and Ehleringer 1992). The perennial bunchgrasses generally have somewhat shallower root systems than the shrubs, but root densities are often as high as or higher than those of shrubs in the upper 0.5 meters. General differences in root depth distributions between grasses and shrubs results in resource partitioning in this system.

Curlleaf mountain mahogany is a multi-branched, evergreen shrub or tree extending from 3 to over 20 feet in height. The rooting of mountain mahogany is spreading and limited by the depth to bedrock. Youngberg and Hu (1972) reported in an Oregon study that curl-leaf mountain mahogany produces nitrogen-fixing root nodules. They also reported that nodulated plants had the highest amounts of nitrogen in the leaves. It is the most widely distributed species of *Cercocarpus* and is the only species of the genus that extends as far north and west as Washington. Most often curl-leaf mountain mahogany stands occur on warm, dry, rocky ridges or outcrops where fire would be an infrequent occurrence (USDA 1937). Dealy (1975) and Scheldt (1969) found that mahogany trees were larger and older on fire-resistant rocky sites and were the seed source if fire destroyed the non-rocky portion of the site.

Curlleaf mountain mahogany plants can reach 1,300+ years of age (Schultz 1987, Schultz et al. 1990). As mahogany stands increase in average age, average canopy volume and height of the individuals present also increases. As average canopy height and volume increase, stand density declines (Schultz et al. 1991). Stands with a closed, or nearly closed canopy often have few or no young curlleaf mahogany (i.e., recruitment) in the understory (Schultz et al. 1990, 1991), despite high seed density beneath trees (Russell and Schupp 1998, Ibanez and Schupp 2002). Intraspecific competition reduces the growth rates of all age classes below the potential growth rates for the species. Competition may also increase mortality in the younger plants.

Curlleaf mountain mahogany plants are very self-compatible for pollination and most developing seed matures and is viable (Russell et al. 1998). The deep litter throughout stands with high canopy cover appears to facilitate seed germination but retard seedling survival due to poor contact between the root and the soil (Schultz et al. 1996, Ibanez and Schupp 2001). Reproduction in large stands with high canopy cover occurs most often in either canopy gaps where a tree has died and increased exposure of bare ground or around the perimeter of the stand under sagebrush plants, where litter cover is less and seldom deep (Schultz 1987, Schultz et al. 1991).

Mahogany seeds require bare mineral soil to germinate; litter depths over 0.25 inches can impede recruitment (Gruell 1985, Schultz et al. 1991, Ibáñez et al. 1998, Ibáñez 2002). Once germination occurs, the seedlings exhibit rapid growth in relation to top growth, providing some resistance to drought and competition with invasive species (Dealy 1975). Dealy (1975) reported that curlleaf mahogany seedlings have a mean taproot length of 0.97 m after 120 days. The mean top height was slightly less than 2.5 cm. Multiple sources (Schultz et al. 1996, Ibáñez et al. 1998) found that mahogany seedlings germinate abundantly under the canopy of adult plants but rarely successfully establish there due to shading and higher litter amounts. In addition, Schultz et al. (1996) found that seedlings had significantly higher long term success in areas dominated by sagebrush canopy than in areas under mahogany canopy or in interspaces. Some hypothesize that the light shading and hydraulic lift provided by sagebrush may create a microsite facilitating mahogany recruitment (Gruell 1985, Ibáñez et al. 1998).

Mountain big sagebrush is generally long-lived; therefore it is not necessary for new individuals to recruit every year for perpetuation of the stand. Infrequent large recruitment events and simultaneous low, continuous recruitment is the foundation of population maintenance (Noy-Meir 1973). Survival of the seedlings is dependent on adequate moisture conditions.

The perennial bunchgrasses that are co-dominant with the shrubs include bluebunch wheatgrass, needlegrasses (*Achnatherum* spp.) and muttongrass (*Poa fendleriana* ssp. *longiligula*). These species generally have somewhat shallower root systems than the shrubs, but root densities are often as high as or higher than those of shrubs in the upper 0.5 m but taper off more rapidly than shrubs. Differences in root depth distributions between grasses and shrubs result in resource partitioning in these shrub/grass systems.

Mahogany stands are susceptible to drought, frost, insect attack, and invasion by non-native species, especially cheatgrass (*Bromus tectorum*). Cheatgrass affects mahogany seedling growth by competing for water resources and nutrients in an area (Ross 1999).

Infilling by singleleaf pinyon (*Pinus monophylla*) and Utah juniper (*Juniperus osteosperma*) may also occur at lower elevations of this site with an extended fire return interval. Eventually, singleleaf pinyon and Utah juniper will dominate the site and the understory of mountain big sagebrush and grasses will be severely reduced. Muttongrass may remain underneath trees on north-facing slopes.

This ecological site has moderate to high resilience to disturbance and resistance to invasion. Resilience increases

with elevation, aspect, precipitation, and nutrient availability. Long-term disturbance response may be influenced by small differences in landscape topography. North slopes are more resilient than south slopes because lower soil surface temperatures operate to keep moisture content higher on northern exposures. Four possible alternative stable states have been identified for this site. The tree state would only occur at lower elevations within the pinyon-juniper zone.

#### Fire Ecology:

The historic fire return interval in curlleaf mountain mahogany stands is not well documented, however a study by Arno and Wilson (1986) suggested sites of curlleaf mountain mahogany with ponderosa pine had fire return intervals of 13 to 22 years before 1900. Fire frequency most likely depends on surrounding vegetation. Mahogany will persist longest in rocky sites where it is protected from fire. Because of their thicker bark, mature trees can often survive low-severity fires (Gruell 1985). Curlleaf mountain mahogany is considered a weak sprouter after fire. It is usually moderately to severely damaged by severe fires and the recovery time of these sites is variable; some measurements show that stands lack recruitment for up to 30 years post-fire (Gruell 1985). Curlleaf mountain mahogany produces seed crops at very irregular intervals and is difficult to reestablish after fire. Seedlings are sensitive to drought and frost (Plummer et al 1968, Dealy 1975).

Mountain big sagebrush is killed by fire (Neuenschwander 1980, Blaisdell et al. 1982), and does not resprout (Blaisdell 1953). Post fire regeneration occurs from seed and will vary depending on site characteristics, seed source, and fire characteristics. Mountain big sagebrush seedlings can grow rapidly and may reach reproductive maturity within 3 to 5 years (Bunting et al. 1987). Mountain big sagebrush may return to pre-burn density and cover within 15-20 years following fire, but establishment after severe fires may proceed more slowly (Bunting et al. 1987).

Depending on fire severity, rabbitbrush (*Chrysothamnus* spp.), ephedra (*Ephedra viridis*), Utah serviceberry (*Amelanchier utahensis*), and mountain snowberry (*Symphoricarpos oreophilus*) may increase after fire. The majority of research concerning rabbitbrush has been conducted on yellow rabbitbrush. Yellow rabbitbrush has a large taproot root system and is known to be shorter lived and less competitive than sagebrush. Seedling density, flower production, and shoot growth decline as competition from other species increases (McKell and Chilcote 1957, Miller et al. 2013). Yellow rabbitbrush is top-killed by fire, but sprouts vigorously after fire (Kuntz 1982, Akinsoji 1988). Snowberry is also top-killed by fire, but resprouts after fire from rhizomes (Leege and Hickey 1971, Noste and Bushey 1987). Mountain snowberry has been noted to regenerate well and exceed pre-burn biomass in the third season after a fire (Merrill et al. 1982). If arrowleaf balsamroot (*Balsamorhiza sagittata*) is common before fire, these plants will increase after fire or with heavy grazing (Wright 1985).

Fire will remove aboveground biomass from bluebunch wheatgrass but plant mortality is generally low (Robberecht and Defossé 1995) because the buds are underground (Conrad and Poulton 1966) or protected by foliage. However, season and severity of the fire will influence plant response. Plant response will vary depending on post-fire soil moisture availability.

Muttongrass, a minor component on this site, is top killed by fire but will resprout after low to moderate severity fires. A study by Vose and White (1991) in an open sawtimber site, found minimal difference in overall effect of burning on muttongrass.

Sandberg bluegrass, a minor component of this ecological site, has been found to increase following fire likely due to its low stature and productivity (Daubenmire 1975, Rau et al. 2008). Reduced bunchgrass vigor or density provides an opportunity for Sandberg bluegrass expansion and/or cheatgrass and other invasive species to occupy interspaces, leading to increased fire frequency and potentially an annual plant community. Repeated frequent fire in this community will facilitate the establishment of an annual weed community with varying amounts of Sandberg bluegrass and rabbitbrush.

#### State and transition model

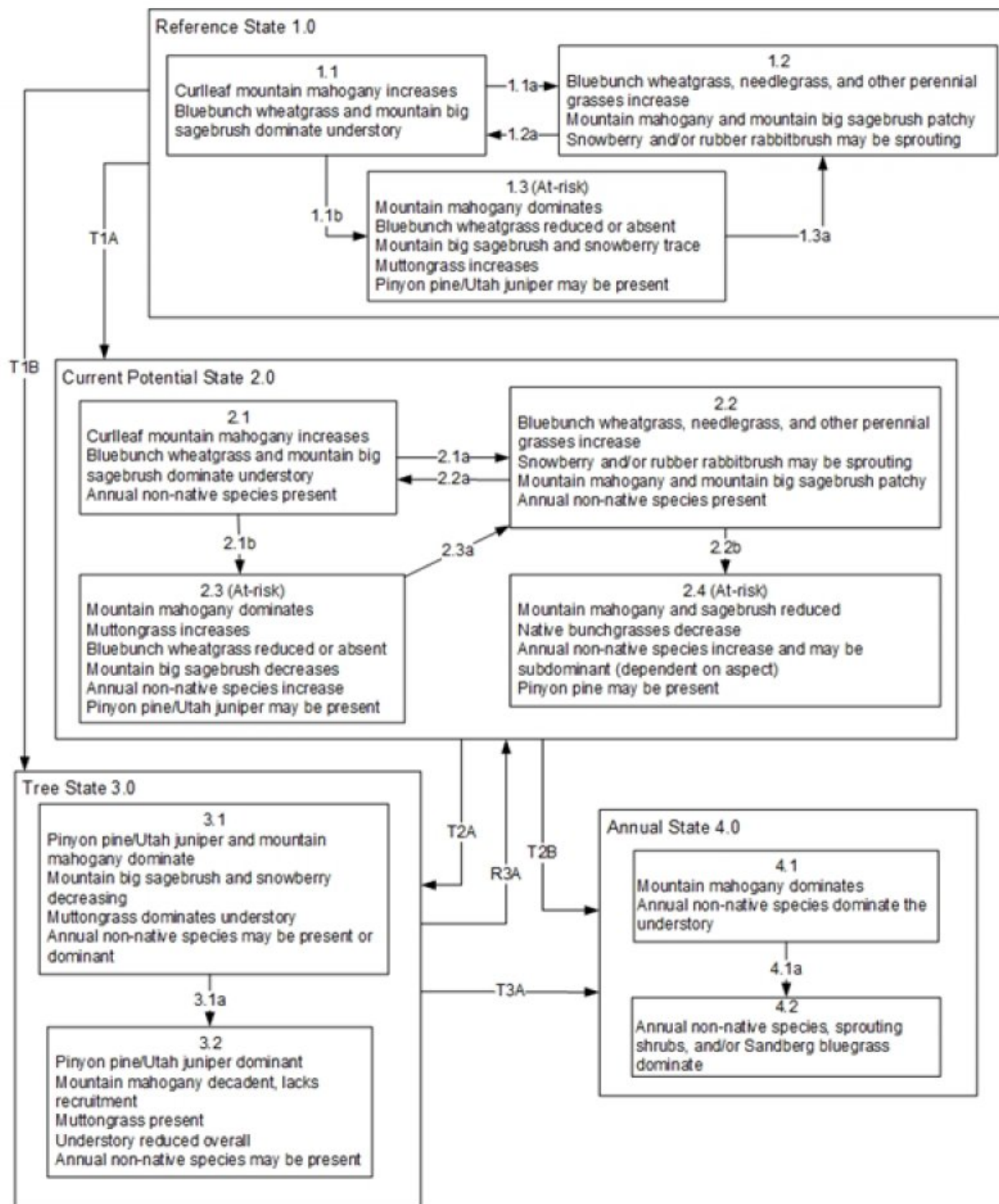


Figure 5. T. Stringham 2/2015



**MLRA 28B**  
**Calcareous Mahogany Savanna**  
**028BY043NV**

**Reference State 1.0 Community Pathways**

- 1.1a: Low severity fire creates mosaic pattern of shrubs and grasses.
- 1.1b: Time and lack of disturbance or fire, long-term drought, herbivory, insect damage or combinations of these. Muttongrass increases with more shade.
- 1.2a: Time and lack of disturbance or fire, long-term drought, herbivory, insect damage or combinations of these.
- 1.3a: Low severity fire creates mosaic pattern.

Transition T1A: Introduction of non-native annual species.

Transition T1B: Time and lack of disturbance allows pinyon/juniper to increase and overtop mahogany. Litter increases while understory plants decrease.

**Current Potential State 2.0 Community Pathways**

- 2.1a: Low severity fire.
- 2.1b: Time and lack of disturbance or fire, long-term drought, inappropriate grazing management, insect attack, or combinations of these. Muttongrass increases because of increased shade from trees.
- 2.2a: Time and lack of disturbance or fire, long-term drought, inappropriate grazing management, insect attack, or combinations of these.
- 2.2b: Fire in the presence of non-native annuals. Annual species may increase in a year with heavy spring precipitation.
- 2.3a: Fire

Transition T2A: Time and lack of disturbance allows pinyon/juniper to increase and overtop mahogany. Litter increases while understory plants decrease.

Transition T2B: Inappropriate grazing in the presence of non-native annual species (4.1) Catastrophic fire (4.2).

**Tree State 3.0 Community Pathways**

- 3.1a: Time and lack of disturbance or fire, drought, inappropriate grazing management, insect attack, or combinations of these allows for maturation of the pinyon community.

Transition T3A: To community phase 4.1 – Inappropriate grazing in the presence of non-native annual species. To community phase 4.2: catastrophic fire

Restoration Pathway R3A: Removal of pinyon and juniper from site will allow mountain mahogany to again become the dominant overstory.

**Annual State 4.0 Community Pathways**

- 4.1a: Catastrophic fire.

**Figure 6. P NovakEchenique 3\_2017**

## **State 1**

### **Reference State**

The Reference State 1.0 is a representative of the natural range of variability under pristine conditions. The Reference State has three general community phases; a tree-shrub dominant phase, a sprouting shrub and perennial grass dominant phase and a shrub dominant phase. State dynamics are maintained by interactions between climatic patterns and disturbance regimes. Negative feedbacks enhance ecosystem resilience and contribute to the stability of the state. These include the presence of all structural and functional groups, low fine fuel loads, and retention of organic matter and nutrients. Plant community phase changes are primarily driven by fire, periodic drought and/or insect attack.

### **Community 1.1**

#### **Community Phase**

The plant community is dominated by curleaf mountain mahogany. Mountain big sagebrush is the principal understory shrub. Bluebunch wheatgrass, western needlegrass, Columbia needlegrass and Letterman's needlegrass are the most prevalent understory grasses. Total overstory canopy cover is less than 50 percent ( $\pm 35\%$ ). Understory vegetation comprises about 20% of the total site production. Potential vegetative composition for the understory is about 55% grasses, 10% forbs and 35% shrubs. Overstory trees and tree-like shrub composition is about 80% of the total site production.



**Table 5. Annual production by plant type**

Plant Type	Low (Kg/Hectare)	Representative Value (Kg/Hectare)	High (Kg/Hectare)
Tree	2942	3138	3413
Shrub/Vine	241	381	521
Grass/Grasslike	286	370	454
Forb	45	90	135
<b>Total</b>	<b>3514</b>	<b>3979</b>	<b>4523</b>

## Community 1.2

### Community Phase

This community phase is characteristic of a post-disturbance, early-seral community. If resulting from fire, mahogany will be present in patches. Snowberry and rabbitbrush are sprouting or increasing in burned areas. Perennial bunchgrasses may dominate.

## Community 1.3

### Community Phase (At Risk)



**Figure 8. T. Stringham 9/2012, NV776, MU 451, Haunchee soil series**

Mahogany density will increase in the absence of disturbance. Shrubs and deep-rooted perennial bunchgrasses will be shaded out by the dense mahogany. Muttongrass is more shade tolerant, however, and will still be found in the understory. Mahogany in dense stands will lose lower branches due to shading and/or herbivory, resulting in a more tree-like appearance. Scattered pinyon and juniper trees may be present and increasing on the site, however the mahogany and shrub understory is intact and is dominating site resources (Miller et al 2008).

## Pathway a

### Community 1.1 to 1.2

Low-severity fire can reduce the mahogany overstory and allow for the understory species to dominate the site. Due to low fuel loads, fires will typically be low severity, resulting in a mosaic pattern.

## Pathway b

### Community 1.1 to 1.3

Time and lack of disturbance such as fire allows the mountain mahogany to increase. The shrub and herbaceous understory components decline due to increased shading from the trees.

## Pathway a

### Community 1.2 to 1.1

Time and lack of disturbance such as fire allows the mountain mahogany to increase. The shrub and herbaceous understory components decline due to increased shading from the trees.

## **Pathway a**

### **Community 1.3 to 1.2**

A low-severity or spot lightning fire, snow loading, or insect damage will decrease the overstory and allow for the herbaceous plants in the understory to increase.

## **State 2**

### **Current Potential State**

This state is similar to the Reference State 1.0. It has similar community phases with the addition of the 2.4 at-risk community phase. Ecological function has not changed, however the resiliency of the state has been reduced by the presence of invasive weeds. This state has the same three general community phases. These non-natives can be highly flammable, and can promote fire where historically fire had been infrequent. Negative feedbacks enhance ecosystem resilience and contribute to the stability of the state. These include the presence of all structural and functional groups, low fine fuel loads, and retention of organic matter and nutrients. Positive feedbacks decrease ecosystem resilience and stability of the state. These include the non-natives' high seed output, persistent seed bank, rapid growth rate, ability to cross pollinate, and adaptations for seed dispersal.

## **Community 2.1**

### **Community Phase**

This community phase is similar to the Reference State Community Phase 1.1, with the presence of non-native species in trace amounts. This community is dominated by curleaf mountain mahogany. Mountain big sagebrush and mountain snowberry make up the shrub components of the understory. Bluebunch wheatgrass and needlegrasses make up the perennial bunchgrasses. Forbs and other grasses are a small component of the understory. Utah juniper and singleleaf pinyon may be present. Total overstory canopy cover is less than 50 percent ( $\pm 35\%$ ). Understory vegetation comprises about 20% of the total site production. Potential vegetative composition for the understory is about 55% grasses, 10% forbs and 35% shrubs. Overstory trees and tree-like shrub composition is about 80% of the total site production.

## **Community 2.2**

### **Community Phase**



Figure 9. T. Stringham, July 2014, NV780, MU851 Lithic Calcixeroll



**Figure 10. T. Stringham, July 2014, NV780, MU 851, Lithic Calcixeroll**

This community phase is characteristic of a post-disturbance, early seral community where annual non-native species are present. Mahogany and sagebrush are present in trace amounts. Snowberry, ephedra and rabbitbrush are sprouting or increasing; perennial bunchgrasses may dominate the site. Annual non-native species are stable or increasing within the community.

### **Community 2.3**

#### **Community Phase (At Risk)**

Curleaf mountain mahogany dominates the overstory. Mountain big sagebrush, mountain snowberry, and rabbitbrush decrease. Perennial bunchgrass understory is reduced. Bare ground may be increasing. Muttongrass will likely increase in the understory and may be the dominant grass on the site. Mahogany may have a “hedged” or tree-like appearance from many years of browsing by deer. Annual non-native plants are increasing in the understory. Scattered pinyon trees may be present and increasing on the site, however the mahogany and shrub understory is intact and is dominating site resources (Miller et al 2008).

### **Community 2.4**

#### **Community Phase (At Risk)**

This community phase is at risk of crossing a threshold into an annual state. Native bunchgrasses dominate the understory; however, annual non-native species such as cheatgrass may be sub-dominant. Annual production and abundance of these annuals may increase drastically in years with heavy spring precipitation. Mountain big sagebrush and mountain snowberry are minor components. Singleleaf pinyon may be present to increasing. This site is susceptible to further degradation from inappropriate grazing management, drought, and wildfire.

### **Pathway a**

#### **Community 2.1 to 2.2**

Fire reduces the overstory and allows for the understory species to dominate the site. Due to low fuel loads, fires are typically low severity or spotting resulting in a mosaic pattern. A fire may be more severe following an unusually wet spring or a change in management favoring an increase in fine fuels. Annual non-native species generally respond well after fire and may be stable or increasing within the community.

### **Pathway b**

#### **Community 2.1 to 2.3**

Time and lack of disturbance allows the mountain mahogany component to increase. The shrub and herbaceous understory components decline due to increased shading from the trees.

### **Pathway a**

#### **Community 2.2 to 2.1**

Time and lack of disturbance and/or grazing management that favors the establishment and growth of woody

species allows curl-leaf mountain mahogany and understory shrubs to re-establish.

### **Pathway b**

#### **Community 2.2 to 2.4**

Tree/shrub removal treatment or prescribed burning in the presence of the non-native annual cheatgrass will reduce shrub canopy and cause a shift to Phase 2.4. A year with heavy spring precipitation in the presence of cheatgrass will accelerate this pathway.

### **Pathway a**

#### **Community 2.3 to 2.2**

Low-severity or lightning spot fire, damage from snow loading, or insect damage will reduce the overstory and allow for the perennial bunchgrasses in the understory to increase. A fire may be more severe following an unusually wet spring or a change in management favoring an increase in fine fuels. Annual non-native species generally respond well after fire and may be stable or increasing within the community.

## **State 3**

### **Tree State**

This state has two community phases that are characterized by singleleaf pinyon and Utah juniper trees dominating site resources. Pinyon trees and Utah juniper outcompete and overtop the mountain mahogany overstory. The understory is reduced due to shading and competition with tree overstory. This state may be compounded by grazing of livestock and wildlife further reducing perennial understory species. Annual non-native species may be increasing. This state will not occur above the pinyon/juniper zone (>9000 ft).

### **Community 3.1**

#### **Community Phase**



Figure 11. T. Stringham July 2012, NV789 MU 770, Lithic Argicryoll





Figure 12. T. Stringham July 2012, NV780 MU770, Lithic Argicryoll

Singleleaf pinyon, Utah juniper, and mountain mahogany co-dominate this phase. The understory of shrubs and grasses is nearly intact but shows signs of thinning (Miller et al 2008). Mountain big sagebrush and snowberry are starting to show signs of increased competition from tree canopy and are decreasing in the understory. Muttongrass increases with shading and may be the dominant bunchgrass in the understory. Annual non-native species are present and may be increasing.

### **Community 3.2** **Community Phase**

Singleleaf pinyon pine and Utah juniper dominates this phase. Trees dominate site resources and the understory is reduced (Miller et al 2008.) Mountain mahogany is decadent and lack recruitment. Muttongrass is present but reduced in density. The shrub component of the understory is reduced, mountain big sagebrush skeletons may be present. Annual non-native species are present to increasing.

### **Pathway a** **Community 3.1 to 3.2**

Time and lack of disturbance allows for the maturation of pinyon pine trees.

### **State 4** **Annual State**

This state has two community phases with an understory dominated by non-native annual grasses like cheatgrass. One phase is dominated by mountain mahogany with an understory of cheatgrass. After fire, the other phase is dominated by sprouting shrubs, annual non-native grass and forbs, and Sandberg bluegrass. This state is a product of many years of heavy grazing during time periods harmful to perennial bunchgrasses, and/or severe wildfire or repeated fires. Sandberg bluegrass will increase with a reduction in deep rooted perennial bunchgrass competition and become the dominant grass. Annuals, Sandberg bluegrass, and sprouting shrubs dominate site resources such that soil water, nutrient capture, nutrient cycling and soil organic matter are temporally and spatially redistributed.

### **Community 4.1** **Community Phase**

Mountain mahogany dominates the overstory and annual non-native species such as cheatgrass dominate the understory. Perennial bunchgrasses are present in trace amounts. This phase is very at risk of fire and converting to annual grassland.

### **Community 4.2** **Community Phase**

Annual non-native species and Sandberg bluegrass dominate the site. Other perennial bunchgrasses may be present in trace amounts. Mountain mahogany and mountain big sagebrush may present in trace amounts.

Rabbitbrush, ephedra and serviceberry are the dominant shrubs.

## **Pathway a**

### **Community 4.1 to 4.2**

Catastrophic fire eliminates the mountain mahogany overstory and allows for annual non-native species to dominate.

## **Transition A**

### **State 1 to 2**

Trigger: This transition is caused by the introduction of non-native annual plants, such as cheatgrass, mustards, and thistle. Slow variables: Over time annual non-native species increase within the community. Threshold: Any amount of introduced non-native species causes an immediate decrease in the resilience of the site. Annual non-native species cannot be easily removed from the system and have the potential to significantly alter disturbance regimes from their historic range of variation.

## **Transition B**

### **State 1 to 3**

Trigger: Time and lack of disturbance such as fire allows for pinyon trees to dominate. Slow variables: Over time abundance and size of pinyon will increase. Threshold: Pinyon pine dominates ecological processes. Trees overtop and outcompete mountain mahogany and shrubs for water and sunlight. Shrub skeletons exceed live shrubs with minimal recruitment of new cohorts.

## **Transition A**

### **State 2 to 3**

Trigger: Time and lack of disturbance such as fire allows for pinyon and juniper trees to dominate. Slow variables: Over time abundance and size of pinyon will increase. Threshold: Pinyon pine dominates ecological processes. Trees overtop and outcompete mountain mahogany and shrubs for water and sunlight. Shrub skeletons exceed live shrubs with minimal recruitment of new cohorts.

## **Transition B**

### **State 2 to 4**

Trigger: High-severity or stand-replacing fire that significantly reduces or eliminates Mountain mahogany and sagebrush. Bunchgrass plants significantly damaged by the fire may be further reduced or eliminated with inappropriate post-fire grazing management. Cheatgrass becomes the dominant grass. Sandberg bluegrass may be a significant component. Slow variable: Cover and production of annual non-natives and/or Sandberg bluegrass will increase. Threshold: Loss of mahogany overstory, sagebrush, and deep-rooted perennial bunchgrasses changes nutrient cycling, nutrient redistribution, and reduces soil organic matter. Increased continuous fine fuels modify the fire regime by changing intensity, size and spatial variability of fires.

## **Restoration pathway A**

### **State 3 to 2**

Removal of singleleaf pinyon and Utah juniper from the site may allow mountain mahogany to reestablish and become dominant in the overstory.

## **Conservation practices**

Brush Management
Prescribed Burning

## **Transition A**



**State 3 to 4**

Trigger: To community phase 4.1: Overgrazing in the presence of non-native annual species can cause a decrease in perennial bunchgrasses and an increase in annual species. Spring and/or fall moisture may also increase annual species. To community phase 4.2: Catastrophic fire. Slow variables: Cover and production of annual non-native species increase in the understory. Threshold: Loss of mahogany overstory, mountain big sagebrush, and deep-rooted perennial bunchgrasses changes nutrient cycling, nutrient redistribution, and reduces soil organic matter and soil moisture. Increased, continuous fine fuels modify the fire regime by changing intensity, size and spatial variability of fires.

**Additional community tables**

Table 6. Community 1.1 plant community composition

Group	Common Name	Symbol	Scientific Name	Annual Production (Kg/Hectare)	Foliar Cover (%)
<b>Grass/Grasslike</b>					
1	<b>Primary Perennial Grasses</b>			241–353	
	bluebunch wheatgrass	PSSPS	<i>Pseudoroegneria spicata</i> ssp. <i>spicata</i>	179–269	–
	muttongrass	POFE	<i>Poa fendleriana</i>	18–72	–
	western needlegrass	ACOC3	<i>Achnatherum occidentale</i>	6–34	–
	Letterman's needlegrass	ACLE9	<i>Achnatherum lettermanii</i>	6–34	–
	Columbia needlegrass	ACNE9	<i>Achnatherum nelsonii</i>	6–22	–
	Indian ricegrass	ACHY	<i>Achnatherum hymenoides</i>	6–17	–
2	<b>Secondary Perennial Grasses</b>			45–101	
	thickspike wheatgrass	ELLA3	<i>Elymus lanceolatus</i>	4–18	–
	needle and thread	HECO26	<i>Hesperostipa comata</i>	4–18	–
	basin wildrye	LECI4	<i>Leymus cinereus</i>	4–18	–
<b>Forb</b>					
3	<b>Perennial</b>			45–135	
	stemless mock goldenweed	STAC	<i>Stenotus acaulis</i>	4–27	–
	arrowleaf balsamroot	BASA3	<i>Balsamorhiza sagittata</i>	4–27	–
	western stoneseed	LIRU4	<i>Lithospermum ruderales</i>	4–27	–
	milkvetch	ASTRA	<i>Astragalus</i>	4–18	–
	thistle	CIRSI	<i>Cirsium</i>	2–9	–
	beardtongue	PENST	<i>Penstemon</i>	0–4	–
<b>Shrub/Vine</b>					
4	<b>Primary Shrubs</b>			196–432	
	mountain big sagebrush	ARTRV	<i>Artemisia tridentata</i> ssp. <i>vaseyana</i>	135–224	–
	curl-leaf mountain mahogany	CELE3	<i>Cercocarpus ledifolius</i>	45–135	–
	mountain snowberry	SYOR2	<i>Symphoricarpos oreophilus</i>	18–72	–
5	<b>Secondary Shrubs</b>			45–90	
	serviceberry	AMELA	<i>Amelanchier</i>	9–18	–
	yellow rabbitbrush	CHVI8	<i>Chrysothamnus viscidiflorus</i>	9–18	–
	mormon tea	EPVI	<i>Ephedra viridis</i>	9–18	–
<b>Tree</b>					
6	<b>Evergreen</b>			2983–3413	
	curl-leaf mountain mahogany	CELE3	<i>Cercocarpus ledifolius</i>	2942–3335	–
	Utah juniper	JUOS	<i>Juniperus osteosperma</i>	20–39	–
	singleleaf pinyon	PIMO	<i>Pinus monophylla</i>	20–39	–

## Animal community

Livestock Interpretations:

This site has value for livestock grazing. Grazing considerations include timing, intensity and duration of grazing. Sampson and Jespersen (1963) states that domestic livestock will browse curleaf mountain mahogany to varying

degrees in all seasons except summer. Bluebunch wheatgrass is moderately grazing tolerant and is very sensitive to defoliation during the active growth period (Blaisdell and Pechanec 1949, Laycock 1967, Anderson and Scherzinger 1975 Britton et al. 1990). Herbage and flower stalk production was reduced with clipping at all times during the growing season; however, clipping was most harmful during the boot stage (Blaisdell and Pechanec 1949, Britton et al. 1990). Tiller production and growth of bluebunch was greatly reduced when clipping was coupled with drought (Busso and Richards 1995). Mueggler (1975) estimated that low vigor bluebunch wheatgrass may need up to eight years rest to recover. Although an important forage species, it is not always the preferred species by livestock and wildlife (Anderson and Scherzinger 1975, Britton et al. 1990).

Western needlegrass has a spreading and deeply penetrating root system, which makes it resistant to trampling. Columbia needlegrass provides valuable forage for all classes of livestock. Overall production is generally low in the upper sagebrush and mountain brush zones and at the limits of its range where Columbia needlegrass grows only in scattered patches. It is especially valuable to cattle and horses on summer ranges and to domestic sheep on lambing grounds. It is more often cropped closely by cattle and horses than by sheep. Columbia needlegrass is palatable to livestock throughout its range. As with most needlegrasses, it is most palatable early in the season before the foliage becomes coarse and wiry. Palatability to cows and horses is increased because large amounts of fine leafage remain green throughout the growing season. Letterman's needlegrass begins growth early in the year and remains green throughout the relatively long growing season, thus, making it valuable forage for livestock. Despite low palatability, mountain big sagebrush is eaten by sheep, cattle, goats, and horses. Chemical analysis indicates that the leaves of big sagebrush equal alfalfa meal in protein, have a higher carbohydrate content, and yield twelvefold more fat (USDA-Forest Service 1937). Antelope bitterbrush is an important shrub species to a variety of animals, such as domestic livestock, antelope, deer, and elk (Wood 1995, Clements and Young 2002). Grazing tolerance of antelope bitterbrush is dependent on site conditions (Garrison 1953). Sandberg bluegrass increases under grazing pressure (Tisdale and Hironaka 1981) and is capable of co-existing with cheatgrass. Common snowberry is considered important browse for many types of livestock. It is especially important to domestic sheep and cattle. Common snowberry was found to be highly palatable to cattle. It plays a critical role in permitting cattle to meet their protein requirements during the latter half of the growing season. Domestic sheep also utilize common snowberry for browse and it is considered fair to good forage. It has no forage value for horses. Some livestock (domestic goats, sheep, and cattle) use it in spring, fall, and/or winter but rarely in the summer.

Stocking rates vary over time depending upon season of use, climate variations, site, and previous and current management goals. A safe starting stocking rate is an estimated stocking rate that is fine-tuned by the client by adaptive management through the year and from year to year.

#### Wildlife Interpretations:

This site provides valuable habitat for a variety of wildlife species. Curlleaf mountain mahogany habitat type has been documented as important browse and cover for elk (*Cervus canadensis*), pronghorn antelope (*Antilocapra americana*) and even feral horses (Furniss et al 1988, Lanner 1983). Sampson and Jespersen (1963) states that curlleaf mountain mahogany is excellent browse for mule deer (*Odocoileus hemionus*). It is not uncommon for these trees to develop a "hedged" appearance after years of regular browsing by wildlife. According to Olsen (1992) curlleaf mountain mahogany is consumed widely by mule deer throughout the year. In fact, mule deer fecal pellets were observed to contain curlleaf mountain mahogany year-round, with the highest frequency of leaves found in winter (Gucker 2006). Mule deer will use curlleaf mountain mahogany for cover as well (Steel et al. 1981). Overgrazing by livestock and/or wildlife will cause a reduction in deep-rooted perennial bunchgrasses in the understory with bluebunch wheatgrass and needlegrasses particularly affected. As perennial grass cover declines, the potential for invasion by annual non-native species is increased. With the reduction in competition from these grasses bunchgrasses, shallower rooted grasses such as Sandberg bluegrass and forbs may increase (Smoliak et al. 1972). Bare ground also increases in this scenario.

This site also provides breeding and hunting grounds for mountain lions, *Puma concolor* (Steele et al. 1981, (Gucker 2006). Lions used curl-leaf mountain mahogany vegetation as an important site for caching kills. Loagan and Irwin (1985) noted of 52 mountain lion caches, 33 percent were located in curlleaf mountain mahogany vegetation (Gucker 2006 and ref. therein).

A variety of small mammals consume curl-leaf mountain mahogany seeds (Gucker 2006, Wildlife Action Plan Team 2012). Curlleaf mountain mahogany leaves and fruits have also been found in bushy-tailed woodrat (*Neotoma cinerea*) middens (Gucker 2006).

Bird species utilize mountain mahogany habitat types heavily. Virginia's warblers (*Oreothlypis virginiae*) were recorded in their second highest densities in the state in mountain mahogany habitats. This habitat type also provides important nesting sites for dusky flycatchers (*Empidonax oberholseri*), rock wrens (*Salpinctes obsoletus*), and American kestrels (*Falco sparverius*) (Wildlife Action Plan Team 2012).

Mountain big sagebrush is highly preferred and nutritious winter forage for mule deer and elk. Common snowberry is considered important browse for many types of wildlife. Bighorn sheep use common snowberry regularly during the summer. Forage value to elk is fair. Common snowberry is important as both cover and food for bird and small mammal populations. These include sharp-tailed, ruffed, and blue grouse, wild turkey and, several non-game species of bird including the kingbird, western flycatcher, and western bluebird. Among small mammals that rely on common snowberry are fox squirrels, desert cottontails, and pocket gopher. Bluebunch wheatgrass is considered one of the most important forage grass species on western rangelands for wildlife. Bluebunch wheatgrass does not generally provide sufficient cover for ungulates, however, mule deer are frequently found in bluebunch-dominated grasslands. Western needlegrass is an important forage species for several wildlife species. Columbia needlegrass provides valuable forage for many species of wildlife. It is also consumed by mule deer and other wildlife species throughout the growing season. Needlegrasses are a significant component in the diet of pocket gophers. Columbia needlegrass is palatable to many species of wildlife throughout its range. As with most needlegrasses, it is most palatable early in the season before the foliage becomes coarse and wiry. Palatability of Columbia needlegrass is described as "fair" for wildlife overall, becoming nearly unpalatable at maturity. Letterman's needlegrass provides valuable forage for many species of wildlife. It is consumed by mule deer and is most palatable early in the season before the foliage becomes coarse and wiry.

## Hydrological functions

Permeability is very slow to moderately rapid. Runoff is medium to very high. Rills are rare to few. Occurrence of rills may be more frequent as canopy cover increases and on steeper slopes. Water flow patterns are rare to few with occurrence increasing as canopy cover increases. Pedestals are none to rare. Occurrence is usually limited to areas of water flow patterns. Perennial herbaceous plants (especially deep-rooted bunchgrasses [i.e., needlegrasses] slow runoff and increase infiltration. Curleaf mountainmahogany and understory shrubs break raindrop impact and provide opportunity for snow catch and accumulation on site.

## Recreational uses

Aesthetic value is derived from the diverse floral and faunal composition and the colorful flowering of wild flowers and shrubs during the spring and early summer. This site offers rewarding opportunities to photographers and for nature study. This site is used for hiking and has potential for upland and big game hunting.

## Other products

Native Americans used big sagebrush leaves and branches for medicinal teas, and the leaves as a fumigant. Bark was woven into mats, bags and clothing. Common snowberry fruit was eaten fresh and dried for winter use. Common snowberry was also used on hair as soap, and the fruits and leaves mashed and applied to cuts or skin sores as a poultice and to soothe sore, runny eyes. Tea from the bark was used as a remedy for tuberculosis and sexually transmitted diseases. A brew made from the entire plant was used as a physic tonic. Arrowshafts and pipestems were made from the stems.

## Other information

Curleaf mountain mahogany may be planted to help stabilize soil in disturbed areas such as roadcuts and mine spoils. Letterman's needlegrass has been used successfully in revegetating mine spoils. This species also has good potential for erosion control.

## Type locality

Location 1: Eureka County, NV	
Township/Range/Section	T17N R52E S11
Latitude	39° 21' 39"
Longitude	116° 5' 4"
General legal description	N½ About 2 miles north of Bellevue Peak, Fish Creek Range, Eureka County, Nevada. Also found in Elko and White Pine Counties, Nevada.

## Other references

- Akinsoji, A. 1988. Postfire vegetation dynamics in a sagebrush steppe in southeastern Idaho, USA. *Vegetatio* 78:151-155.
- Anderson, E. W. and R. J. Scherzinger. 1975. Improving quality of winter forage for elk by cattle grazing. *Journal of Range Management*:120-125.
- Arno, S. F. and A. E. Wilson. 1986. Dating past fires in curlleaf mountain-mahogany communities. *Journal of Range Management*:241-243.
- Blaisdell, J. P. 1953. Ecological effects of planned burning of sagebrush-grass range on the upper Snake River Plains. US Dept. of Agriculture.
- Blaisdell, J. P. and J. F. Pechanec. 1949. Effects of herbage removal at various dates on vigor of bluebunch wheatgrass and arrowleaf balsamroot. *Ecology* 30:298-305.
- Blaisdell, J.P., R.B. Murray, E.D. McArthur. 1982. Managing Intermountain rangelands--sagebrush-grass ranges. Ogden, UT: U.S. Department of Agriculture, Forest Service, Intermountain Forest and Range Experiment Station. Gen. Tech. Rep. INT-134. 41 p.
- Britton, C. M., G. R. McPherson, and F. A. Sneva. 1990. Effects of burning and clipping on five bunchgrasses in eastern Oregon. *Western North American Naturalist* 50:115-120.
- Bunting, S. C., B. M. Kilgore, and C. L. Bushey. 1987. Guidelines for prescribed burning sagebrush-grass rangelands in the northern Great Basin. Ogden, UT: US Department of Agriculture, Forest Service, Intermountain Research Station.
- Busso, C. A. and J. H. Richards. 1995. Drought and clipping effects on tiller demography and growth of two tussock grasses in Utah. *Journal of Arid Environments* 29:239-251.
- Caudle, D., J. DiBenedetto, M. Karl, H. Sanchez, and C. Talbot. 2013. Interagency Ecological Site Handbook for Rangelands. Available at: <http://jornada.nmsu.edu/sites/jornada.nmsu.edu/files/InteragencyEcolSiteHandbook.pdf>. Accessed 4 October 2013.
- Chambers, J., B. Bradley, C. Brown, C. D'Antonio, M. Germino, J. Grace, S. Hardegree, R. Miller, and D. Pyke. 2013. Resilience to stress and disturbance, and resistance to *Bromus tectorum* L. invasion in cold desert shrublands of western North America. *Ecosystems*:1-16.
- Chambers, J.C., B.A. Roundy, R.R. Blank, S.E. Meyer, and A. Whittaker. 2007. What makes Great Basin sagebrush ecosystems invisable by *Bromus tectorum*? *Ecological Monographs* 77:117-145.
- Clements, C. D. and J. A. Young. 2002. Restoring antelope bitterbrush. *Rangelands* 24:3-6.
- Conrad, C. E. and C. E. Poulton. 1966. Effect of a wildfire on Idaho fescue and bluebunch wheatgrass. *Journal of Range Management*:138-141.
- Daubenmire, R. 1970. Steppe Vegetation of Washington. Washington Agricultural Experiment Station. Technical Bulletin 62. 131 pp.
- Daubenmire, R. 1975. Plant succession on abandoned fields, and fire influences in a steppe area in southeastern Washington. *Northwest Science* 49:36-48.
- Dealy, E.J. 1975. Ecology of curlleaf mountain-mahogany (*Cercocarpus ledifolius* Nutt) in eastern Oregon and adjacent areas. Unpublished dissertation, Oregon State University, Corvallis.
- Dobkin, D.S. and J.D. Sauder. 2004. Shrub steppe landscapes in jeopardy. Distributions, abundances, and the uncertain future of birds and small mammals in the Intermountain West. Bend, OR: High Desert Ecological Research Institute.

- Dobrowolski, J.P., Caldwell, M.M. and Richards, J.H. 1990. Basin hydrology and plant root systems. In: Plant Biology of the Basin and Range. New York, NY: Springer-Verlag Pub.,
- Driscoll, R. S. 1964. A relict area in the central Oregon juniper zone. *Ecology* 45:345-353.
- Eckert, R. E., Jr. and J. S. Spencer. 1987. Growth and reproduction of grasses heavily grazed under rest-rotation management. *Journal of Range Management* 40:156-159.
- Evans, R. A. and J. A. Young. 1978. Effectiveness of rehabilitation practices following wildfire in a degraded big sagebrush-downy brome community. *Journal of Range Management* 31:185-188.
- Furniss, M. M., D. C Ferguson, K. W Voget, J. W. Burkhardt, A.R. Tiedemann, J. L. Oldemeyer. 1988. Taxonomy, life history, and ecology of a mountain-mahogany defoliator, *Stamnodes animata* (Pearsall), in Nevada. Fish and Wildlife Research 3. Washington, DC: U.S. Department of the Interior, Fish and Wildlife Service. 26 p.
- Ganskopp, D. 1988. Defoliation of thurber needlegrass: herbage and root responses. *Journal of Range Management* 41:472-476.
- Garrison, G. A. 1953. Effects of clipping on some range shrubs. *Journal of Range Management* 6:309-317.
- Gruell, G., S. C. Bunting, and L. Neuenschwander. 1985. Influence of fire on curlleaf mountain-mahogany in the Intermountain West. In J. E. Lotan, J.K. Brown, compilers. Fire's effects on wildlife habitat - symposium proceedings; 1984 March 21; Missoula, MT. Ogden, UT: U.S. Department of Agriculture, Forest Service, Intermountain Research Station. General Technical Report INT-186. p. 58-72.
- Gucker, Corey L. 2006. *Cercocarpus ledifolius*. In: Fire Effects Information System, [Online]. U.S. Department of Agriculture, Forest Service, Rocky Mountain Research Station, Fire Sciences Laboratory (Producer). Available: <http://www.fs.fed.us/database/feis/>
- Houghton, J.G., C.M. Sakamoto, and R.O. Gifford. 1975. Nevada's Weather and Climate, Special Publication 2. Nevada Bureau of Mines and Geology, Mackay School of Mines, University of Nevada, Reno, NV.
- Ibáñez, I., and Eugene W. Schupp. 2002. Effects of litter, soil surface conditions, and microhabitat on *Cercocarpus ledifolius* Nutt. Seedling emergence and establishment. *Journal of Arid Environments* 52:209-222.
- Ibáñez, I., E. W. Schupp, and J. L. Boettinger. 1998. Successional history of a curlleaf mountain mahogany stand: a hypothesis. McArthur ED, Ostler WK, Wambolt CL (comps) *Proceedings: Shrubland Ecotones*:12-14.
- Koniak, S. 1985. Succession in pinyon-juniper woodlands following wildfire in the Great Basin. *The Great Basin Naturalist* 45:556-566.
- Kuntz, D. E. 1982. Plant response following spring burning in an *Artemisia tridentata* subsp. *vaseyana*/*Festuca idahoensis* habitat type. Dissertation, University of Idaho, Moscow, ID.
- Lanner, Ronald M. 1983. *Trees of the Great Basin: A Natural History*. Reno, NV: University of Nevada Press. 215 p.
- Laycock, W. A. 1967. How heavy grazing and protection affect sagebrush-grass ranges. *Journal of Range Management*:206-213.
- Leege, T. A. and W. O. Hickey. 1971. Sprouting of northern Idaho shrubs after prescribed burning. *The Journal of Wildlife Management*:508-515.
- Logan, Kenneth A. and L. Irwin. 1985. Mountain lion habitats in the Big Horn Mountains, Wyoming. *Wildlife Society Bulletin*. 13: 257-262.
- McKell, C. M. and W. W. Chilcote. 1957. Response of rabbitbrush following removal of competing vegetation. *Journal of Range Management* 10:228-229.



- Merrill, E. H., H. Mayland, and J. Peek. 1982. Shrub responses after fire in an Idaho ponderosa pine community. *The Journal of Wildlife Management* 46:496-502.
- Miller, R. F., J. C. Chambers, D. A. Pyke, F. B. Pierson, and C. J. Williams. 2013. A review of fire effects on vegetation and soils in the Great Basin Region: response and ecological site characteristics. Fort Collins, CO: U.S. Department of Agriculture, Forest Service, Rocky Mountain Research Station. Gen. Tech. Rep. RMRS-GTR-308. 126 p.
- Miller, R. F., R.J. Tausch, E.D. McArthur, D.D. Johnson, and S.C. Sanderson. 2008. Age structure and expansion of piñon-juniper woodlands: a regional perspective in the intermountain west. Fort Collins, CO: U.S. Department of Agriculture, Forest Service, Rocky Mountain Research Station. RMRS-RP-69. 15 p.
- National Oceanic and Atmospheric Administration. 2004. The North American Monsoon. Reports to the Nation. National Weather Service, Climate Prediction Center. Available online: <http://www.weather.gov/>
- Neuenschwander, L. 1980. Broadcast burning of sagebrush in the winter. *Journal of Range Management*: 233-236.
- Noste, N. V. and C. L. Bushey. 1987. Fire response of shrubs of dry forest habitat types in Montana and Idaho. Gen. Tech. Rep. INT-GTR-239.
- Noy-Meir, I. 1973. Desert ecosystems: environment and producers. *Annual Review of Ecology and Systematics*. 4: 25-51.
- Olsen, Rich. 1992. Mule deer habitat requirements and management in Wyoming. B-965. Laramie, WY: University of Wyoming, Cooperative Extension Service.
- Plummer, A.P., D.R. Christensen, and S.B. Monsen. 1968. Restoring big-game range in Utah. Publication No. 683. Utah Division of Fish and Game.
- Rau, B. M., J. C. Chambers, R. R. Blank, and D. W. Johnson. 2008. Prescribed fire, soil, and plants: burn effects and interactions in the central Great Basin. *Rangeland Ecology and Management* 61:169-181.
- Robberecht, R. and G. Defossé. 1995. The relative sensitivity of two bunchgrass species to fire. *International Journal of Wildland Fire* 5:127-134.
- Ross, C. 1999. Population dynamics and changes in curleaf mountain mahogany (*Cercocarpus ledifolius* Nutt.) in two adjacent Sierran and Great Basin mountain ranges. Ph.D. Dissertation. University of Nevada, Reno.
- Sampson, A.W., B.S. Jespersen. 1963. California range brushlands and browse plants. Berkeley, CA: University of California, Division of Agricultural Sciences, California Agricultural Experiment Station, Extension Service. 162 p.
- Scheldt, R.S. 1969. Ecology and utilization of curleaf mountain mahogany in Idaho. Unpublished thesis, University of Idaho, Moscow.
- Schultz, B.W., P.T. Tueller, and R.J. Tausch. 1990. Ecology of curleaf mahogany in western and central Nevada: community and population structure. *Journal of Range Management* 43(1): 13-20.
- Schultz, B. W., R. J. Tausch, and P. T. Tueller. 1991. Size, age, and density relationships to curleaf mahogany (*Cercocarpus ledifolus*) populations in western and central Nevada: competitive implications. *Great Basin Naturalist* 51:183-191.
- Schultz, B. W., R. J. Tausch, and P. T. Tueller. 1996. Spatial relationships among young *Cercocarpus ledifolius* (curleaf mountain mahogany). *Great Basin Naturalist* 56:261-266.
- Smoliak, S., J. F. Dormaar, and A. Johnston. 1972. Long-term grazing effects on *Stipa-Bouteloua* prairie soils. *Journal of Range Management* 25:246-250.
- Stringham, T.K., P. Novak-Echenique, P. Blackburn, C. Coombs, D. Snyder and A. Wartgow. 2015. Final Report for

USDA Ecological Site Description State-and-Transition Models, Major Land Resource Area 28A and 28B Nevada. University of Nevada Reno, Nevada Agricultural Experiment Station Research Report 2015-01. p. 1524.

Tisdale, E. W. and M. Hironaka. 1981. The sagebrush-grass region: A review of the ecological literature. University of Idaho, Forest, Wildlife and Range Experiment Station.

Uresk, D. W., J. F. Cline, and W. H. Rickard. 1976. Impact of wildfire on three perennial grasses in south-central Washington. *Journal of Range Management* 29:309-310.

USDA–Forest Service. 1937. *Range Plant Handbook*. New York, NY: Dover Publications. 816 pp.

Vose, J. M. and A. S. White. 1991. Biomass response mechanisms of understory species the first year after prescribed burning in an Arizona ponderosa-pine community. *Forest Ecology and Management* 40:175-187.

Whisenant, S. G. 1990. Changing fire frequencies on Idaho's Snake River Plains: ecological and management implications. In E. D. McArthur, E. M. Romney, S. D. Smith, P. T. Tueller, compilers. *Proceedings-symposium on cheatgrass invasion, shrub die-off, and other aspects of shrub biology and management*; 1989 April 5-7; Las Vegas, NV. Ogden, UT: U.S. Department of Agriculture, Forest Service, Intermountain Research Station. Gen. Tech. Rep. INT-GTR-276. p 4-10.

Wildlife Action Plan Team. 2012. *Nevada Wildlife Action Plan*. Nevada Department of Wildlife. Reno, Nevada.

Wood, M. K., B. A. Buchanan, and W. Skeet. 1995. Shrub preference and utilization by big game on New Mexico reclaimed mine land. *Journal of Range Management* 48:431-437.

Wright, H. A. 1985. Effects of fire on grasses and forbs in sagebrush-grass communities. Pages 12-21 in *Rangeland Fire Effects; A Symposium*: Boise, ID, USDI-BLM.

Wright, H. A. and J. O. Klemmedson. 1965. Effect of fire on bunchgrasses of the sagebrush-grass region in southern Idaho. *Ecology* 46:680-688.

Young, R.P. 1983. Fire as a vegetation management tool in rangelands of the Intermountain Region. In: Monsen, S.B. and N. Shaw (compilers). *Managing Intermountain rangelands-- improvement of range and wildlife habitats: Proceedings*; 1981 September 15-17; Twin Falls, ID; 1982 June 22-24; Elko, NV. Gen. Tech. Rep. INT-157. Ogden, UT: U.S. Department of Agriculture, Forest Service, Intermountain Forest and Range Experiment Station. p 18-31.

Youngberg, C.T. and L. Hu. 1972. Root nodules on mountain mahogany. *Forest Science* 18: 211-212.

## Contributors

CP/HA

T. Stringham/P.Novak-Echenique

## Rangeland health reference sheet

Interpreting Indicators of Rangeland Health is a qualitative assessment protocol used to determine ecosystem condition based on benchmark characteristics described in the Reference Sheet. A suite of 17 (or more) indicators are typically considered in an assessment. The ecological site(s) representative of an assessment location must be known prior to applying the protocol and must be verified based on soils and climate. Current plant community cannot be used to identify the ecological site.

Author(s)/participant(s)	P. Novak-Echenique
Contact for lead author	State Rangeland Management Specialist

Date	11/18/2009
Approved by	PNovak-Echenique
Approval date	
Composition (Indicators 10 and 12) based on	Annual Production

## Indicators

1. **Number and extent of rills:** Rills are rare to few. Occurrence of rills may be more frequent as canopy cover increases and on steeper slopes after summer convection storms or rapid snowmelt.  

---
2. **Presence of water flow patterns:** Water flow patterns are rare to few with occurrence increasing as canopy cover increases. Flow patterns are typically short (< 2m), meandering and interrupted by plant bases and rock fragments.  

---
3. **Number and height of erosional pedestals or terracettes:** Pedestals are none to rare. Occurrence is usually limited to areas of water flow patterns.  

---
4. **Bare ground from Ecological Site Description or other studies (rock, litter, lichen, moss, plant canopy are not bare ground):** Bare Ground  $\pm$  5-10%, depending on amount of surface rock fragments.  

---
5. **Number of gullies and erosion associated with gullies:** None  

---
6. **Extent of wind scoured, blowouts and/or depositional areas:** None - the soil surface is protected by rock fragments.  

---
7. **Amount of litter movement (describe size and distance expected to travel):** Fine litter (foliage from grasses and annual & perennial forbs) expected to move distance of slope length during intense summer convection storms or rapid snowmelt events. Persistent litter (large woody material) will remain in place except during large rainfall events. Mat of accumulating leaf or needle litter under mature trees is very stable and shows no obvious movement.  

---
8. **Soil surface (top few mm) resistance to erosion (stability values are averages - most sites will show a range of values):** Soil stability values should be 3 to 6 on most soil textures found on this site.  

---
9. **Soil surface structure and SOM content (include type of structure and A-horizon color and thickness):** Surface structure is thick platy, subangular blocky, or very fine granular. Soil surface colors are grayish browns and soils are typified by a mollic epipedon. Surface textures are loams. Organic carbon of the surface 2 to 4 inches is typically 3 to 5 percent, dropping off quickly below. Organic matter content can be more or less depending on micro-topography.  

---
10. **Effect of community phase composition (relative proportion of different functional groups) and spatial distribution on infiltration and runoff:** Perennial herbaceous plants (especially deep-rooted bunchgrasses [i.e., needlegrasses] slow runoff and increase infiltration. Curlleaf mountain mahogany and understory shrubs break raindrop

impact and provide opportunity for snow catch and accumulation on site.

---

11. **Presence and thickness of compaction layer (usually none; describe soil profile features which may be mistaken for compaction on this site):** Compacted layers are none. Subangular blocky or massive sub-surface horizons or subsoil argillic horizons are not to be interpreted as compacted layers.
- 

12. **Functional/Structural Groups (list in order of descending dominance by above-ground annual-production or live foliar cover using symbols: >>, >, = to indicate much greater than, greater than, and equal to):**

Dominant: Reference State: Curlleaf mountain mahogany

Sub-dominant: Deep-rooted, cool season, perennial bunchgrasses > understory shrubs > deep-rooted, cool season, perennial grasses > shallow-rooted, cool season, perennial forbs = fibrous, shallow-rooted, cool season, perennial forbs = annual forbs

Other: evergreen trees

Additional: With an extended fire return interval, the shrub and tree component will increase at the expense of the herbaceous component. The evergreen trees may eventually dominate this site and the understory will be greatly reduced.

---

13. **Amount of plant mortality and decadence (include which functional groups are expected to show mortality or decadence):** Overstory trees have little mortality. Dead branches within understory shrubs are common and standing dead shrub canopy material may be as much as 35% of total shrub canopy; mature bunchgrasses (<25%) may have dead centers.
- 

14. **Average percent litter cover (%) and depth ( in):** Herbaceous, or non-persistent, litter within curlleaf mountainmahogany canopy interspaces (~20-30%) and litter depth is  $\pm \frac{1}{2}$  inch. Leaf litter forms a mat 1 to 2 inches thick under the drip line of mature mountainmahogany. Large, persistent, litter from trees (limbs, etc.) variable to 5%.
- 

15. **Expected annual annual-production (this is TOTAL above-ground annual-production, not just forage annual-production):** Total for all trees, shrubs and herbaceous plants, irrespective of plant height for normal or average growing season (through May) =  $\pm 3500$  lbs/ac. For understory vegetation to 4½ feet and normal or average growing season (through May) =  $\pm 800$  lbs/ac.
- 

16. **Potential invasive (including noxious) species (native and non-native). List species which BOTH characterize degraded states and have the potential to become a dominant or co-dominant species on the ecological site if their future establishment and growth is not actively controlled by management interventions. Species that become dominant for only one to several years (e.g., short-term response to drought or wildfire) are not invasive plants. Note that unlike other indicators, we are describing what is NOT expected in the reference state for the ecological site:** Potential invaders include cheatgrass. Singleleaf pinyon and Utah juniper may increase on this site and eventually dominate.
-

17. **Perennial plant reproductive capability:** All functional groups should reproduce in average (or normal) and above average growing season years. Reduced growth and reproduction occur during extreme or extended drought conditions.
-