

Ecological site FX052X01X160 Thin Breaks (TB) Dry Grassland

Last updated: 8/16/2019
Accessed: 05/11/2025

General information

Provisional. A provisional ecological site description has undergone quality control and quality assurance review. It contains a working state and transition model and enough information to identify the ecological site.

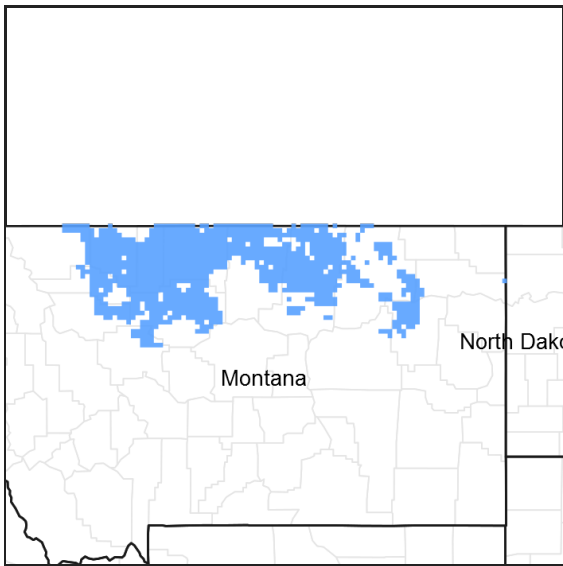


Figure 1. Mapped extent

Areas shown in blue indicate the maximum mapped extent of this ecological site. Other ecological sites likely occur within the highlighted areas. It is also possible for this ecological site to occur outside of highlighted areas if detailed soil survey has not been completed or recently updated.

MLRA notes

Major Land Resource Area (MLRA): 052X–Brown Glaciated Plains

The Brown Glaciated Plains, MLRA 52, is an expansive, agriculturally and ecologically significant area. It consists of approximately 14.5 million acres and stretches across 350 miles from east to west, encompassing portions of 15 counties in north-central Montana. This region represents the southwestern limit of the Laurentide Ice Sheet and is considered to be the driest and westernmost area within the vast network of glacially-derived prairie pothole landforms of the northern Great Plains. Elevation ranges from 2,000 feet (610 meters) to 4,600 feet (1,400 meters).

Soils are primarily Mollisols but Entisols, Inceptisols, Alfisols and Vertisols are also common. Till from continental glaciation is the predominant parent material, but alluvium and bedrock are also common. Till deposits are typically less than 50 feet thick, and in some areas glacially deformed bedrock occurs at or near the soil surface (Soller, 2001). Underlying the till is sedimentary bedrock largely consisting of Cretaceous shale, sandstone and mudstone (Vuke et al., 2007). It is commonly exposed on hillslopes, particularly along drainageways. Significant alluvial deposits occur along glacial outwash channels and major drainages, including portions of the Missouri, Teton, Marias, Milk, and Frenchman Rivers. Large glacial lakes, particularly in the western half of the MLRA, deposited clayey and silty lacustrine sediments (Fullerton et al., 2013).

Much of the western portion of this MLRA was glaciated towards the end of the Wisconsin age, and the maximum glacial extent occurred approximately 20,000 years ago (Fullerton et al., 2004). The result is a geologically young

landscape that is predominantly a level till plain interspersed with lake plains and dominated by soils in the Mollisol and Vertisol orders. These soils are very productive and generally are well-suited to dryland farming. Much of this area is aridic-ustic. Crop-fallow dryland wheat farming is the predominant land use. Areas of rangeland typically are on steep hillslopes along drainages.

The rangeland, much of which is native mixedgrass prairie, increases in abundance in the eastern half of the MLRA. The Wisconsin-age till in the north-central part of this area typically formed large disintegration moraines with steep slopes and numerous poorly-drained potholes. A large portion of Wisconsin-age till occurring on the type of the level terrain that would typically be optimal for farming has large amounts of less-suitable sodium-affected Natrustalfs. Significant portions of Blaine, Phillips, and Valley Counties were glaciated approximately 150,000 years ago during the Illinoian age. Due to erosion and dissection of the landscape, many of these areas have steeper slopes and more exposed bedrock than areas glaciated during the Wisconsin age (Fullerton and Colton, 1986).

While much of the rangeland in the aridic-ustic portion of MLRA 52 is classified as belonging to the dry grassland climatic zone, sites in portions of southern MLRA 52 may belong to the dry shrubland climatic zone. The dry shrubland zone represents the northernmost extent of the big sagebrush (*Artemisia tridentata*) steppe on the Great Plains. Because similar soils occur in both southern and northern portions of the MLRA, it is currently hypothesized that climate is the primary driving factor affecting big sagebrush distribution in this area. However the precise factors are not fully understood at this time.

Sizeable tracts of largely unbroken rangeland in the eastern half of the MLRA and adjacent southern Saskatchewan are home to the Northern Montana population of greater sage grouse (*Centrocercus urophasianus*), and large portions of this area are considered to be a Priority Area for Conservation (PAC) by the U.S. Fish and Wildlife Service (U.S. Fish and Wildlife Service, 2013). This population is unique among sage grouse populations because many individuals overwinter in the big sagebrush steppe (dry shrubland) in the southern portion of the MLRA and then migrate to the northern portion of the MLRA, which lacks big sagebrush (dry grassland), to live the rest of the year (Smith, 2013).

Areas of the till plain near the Bearpaw and Highwood Mountains as well as the Sweetgrass Hills and Rocky Mountain foothills are at higher elevations, receive higher amounts of precipitation, and have a typic-ustic moisture regime. These areas have significantly more rangeland production than the drier aridic-ustic portions of the MLRA and have enough moisture to produce crops annually rather than just bi-annually, as in the drier areas. Ecological sites in this higher precipitation area are classified as the moist grassland climatic zone.

Classification relationships

NRCS Soil Geography Hierarchy

- Land Resource Region: Northern Great Plains
- Major Land Resource Area (MLRA): 052 Brown Glaciated Plains
- Climate Zone: Dry Grassland

National Hierarchical Framework of Ecological Units (Cleland et al. 1997, McNab et al. 2007)

- Domain: Dry
- Division: Temperate Steppe
- Province: Great Plains-Palouse Dry Steppe Province 331
- Section: Northwestern Glaciated Plains 331D
- Subsection: Montana Glaciated Plains 331Dh
- Landtype Association/Landtype Phase: N/A

National Vegetation Classification Standard (Federal Geographic Data Committee 2008)

- Class: Mesomorphic Shrub and Herb Vegetation Class (2)
- Subclass: Temperate and Boreal Grassland and Shrubland Subclass (2.B)
- Formation: Temperate Grassland, Meadow, and Shrubland Formation (2.B.2)
- Division: Great Plains Grassland and Shrubland Division (2.b.2.Nb)
- Macrogroup: *Hesperostipa comata* – *Pascopyrum smithii* – *Festuca hallii* Grassland Macrogroup (2.B.2.Nb.2)
- Group: *Pascopyrum smithii* – *Hesperostipa comata* – *Schizachyrium scoparium* – *Bouteloua* spp. Mixedgrass Prairie Group (2.B.2.Nb.2.c)
- Alliance: *Pascopyrum smithii* – *Nassella viridula* Northwestern Great Plains Herbaceous Alliance
- Association: *Pascopyrum smithii* – *Hesperostipa comata* Central Mixedgrass Grassland

EPA Ecoregions

- Level 1: Great Plains (9)
- Level 2: West-Central Semi-Arid Prairies (9.3)
- Level 3: Northwestern Glaciated Plains (42)
- Level 4: North-Central Brown Glaciated Plains (42o) and Glaciated Northern Grasslands (42j)

Ecological site concept

This provisional ecological site occurs in the Dry Grassland climatic zone of MLRA 52. Figure 1 illustrates the distribution of this ecological site based on current data. This map is approximate, is not intended to be definitive, and may be subject to change. Onsite evaluations are necessary, particularly in boundary or intergrade areas where ecological sites from multiple climate zones may overlap. Thin Breaks Dry Grassland is a somewhat extensive ecological site occurring on steep or dissected landscapes in MLRA 52. This ecological site occurs on, hillslopes, bluffs, and escarpments. This site is typically found on side slopes, nose slopes, and head slopes in a badlands landscape. Due to the complex nature of the landscape, soil texture, soil depth, and slope on this ecological site can be highly variable.

The distinguishing characteristics of this site are lithic or paralithic bedrock within 40 inches of the soil surface and a relatively young, undeveloped soil profile, which lacks features such as a mollic epipedon and an argillic horizon. Soils range from very shallow (less than 12 inches to bedrock) to moderately deep (between 20 to 40 inches to bedrock) and are typically derived from residuum. Soil surface textures vary from sandy loam to clay loam and clay content is less than 35 percent. Slopes vary, but are typically greater than 15 percent. Characteristic vegetation is needle and thread (*Hesperostipa comata*), western wheatgrass (*Pascopyrum smithii*), and threadleaf sedge (*Carex filifolia*). Little bluestem (*Schizachyrium scoparium*) becomes common on this site in the eastern portion of its distribution.

Associated sites

FX052X01X029	Limy-Steep (Lystp) Dry Grassland Limy Steep Dry Grassland typically occurs upslope from Thin Breaks. It typically occupies a shoulder position upslope from the Thin Breaks Dry Grassland ecological site.
FX052X01X131	Shallow Clay (Swc) Dry Grassland Shallow Clay Dry Grassland is adjacent to Thin Breaks where soils contain greater than 35 percent clay. It typically occupies a similar slope position to the Thin Breaks Dry Grassland ecological site.
FX052X01X007	Coarse Clay (Coc) Dry Grassland Coarse Clay Dry Grassland is adjacent to Thin Breaks where soils contain greater than 35 percent clay and have a strong granular structure. It is commonly in the same landscape positions to the Thin Breaks Dry Grassland ecological site.

Similar sites

FX052X03X160	Thin Breaks (TB) Dry Shrubland This site differs from Thin Breaks Dry Grassland in that annual temperatures are slightly warmer and it supports big sagebrush rather than silver sagebrush.
FX052X01X131	Shallow Clay (Swc) Dry Grassland This site differs from Thin Breaks Dry Grassland in that the clay content is greater than 35 percent and depth to bedrock is less than 20 inches.
FX052X01X029	Limy-Steep (Lystp) Dry Grassland This site differs from Thin Breaks Dry Grassland in that the soil depth is greater than 40 inches and soils are typically derived from glacial till rather than residuum. Herbaceous production, particular of mid-statured bunchgrasses, is significantly higher.
FX052X01X040	Loamy-Steep (Lostp) Dry Grassland This site differs from Thin Breaks Dry Grassland in that the soil is typically greater than 40 inches deep and derived from glacial till. When moderately deep (20 to 40 inches) soils are well developed (evidenced by a mollic epipedon and/or argillic horizon).

Table 1. Dominant plant species

Tree	Not specified
Shrub	Not specified
Herbaceous	Not specified

Legacy ID

R052XY160MT

Physiographic features

Thin Breaks Dry Grassland is a somewhat extensive ecological site occurring across the till plains and moraines of MLRA 52. The majority of MLRA 52 is covered by a broad till plain. This ecological site largely occurs where the till plain has been dissected by streams or rivers and bedrock is exposed. This site is typically on side slopes, nose slopes, and head slopes on hillslopes, bluffs, and escarpments. Slopes vary from 0 to 60 percent, but are typically greater than 15 percent.

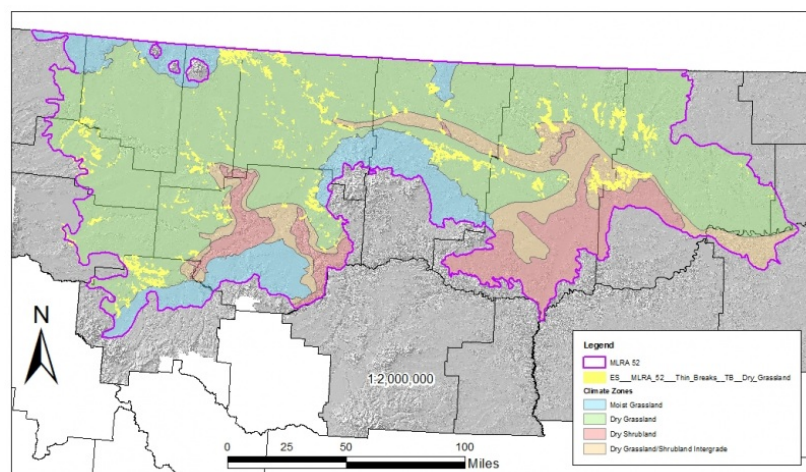


Figure 2. Figure 1 General distribution of the Thin Breaks Dry Grassland ecological site by map unit extent

Table 2. Representative physiographic features

Geomorphic position, hills	(1) Head Slope (2) Nose Slope (3) Side Slope
Landforms	(1) Till plain > Hillslope (2) Till plain > Bluff (3) Till plain > Escarpment
Elevation	610–1,180 m
Slope	0–60%
Aspect	Aspect is not a significant factor

Climatic features

The Brown Glaciated Plains is a semi-arid region with a temperate continental climate that is characterized by frigid winters and warm to hot summers (Cooper et al., 2001). The average frost-free period for this ecological site is 120 days. The majority of precipitation occurs as steady, soaking, frontal system rains in late spring to early summer. Summer rainfall comes mainly from convection thunderstorms that typically deliver scattered amounts of rain in intense bursts. These storms may be accompanied by damaging winds and large-diameter hail and result in flash flooding along low-order streams. Severe drought occurs on average in 2 out of 10 ten years. Annual precipitation ranges from 10 to 14 inches, and 70 to 80 percent of this occurs during the growing season (Cooper et al., 2001).

Extreme climatic variations, especially droughts, have the greatest influence on species cover and production (Coupland, 1958, 1961; Biondini et al., 1998).

During the winter months, the western half of MLRA 52 commonly experiences chinook winds, which are strong west to southwest surface winds accompanied by abrupt increases in temperature. The chinook winds are strongest on the western boundary of the MLRA near the Rocky Mountain foothills and decrease eastward. In addition to producing damaging winds, prolonged chinook episodes can result in drought or vegetation kills due to the reaction of plants to a “false spring” (Oard, 1993).

Table 3. Representative climatic features

Frost-free period (average)	120 days
Freeze-free period (average)	140 days
Precipitation total (average)	305 mm

Climate stations used

- (1) CARTER 14 W [USC00241525], Floweree, MT
- (2) CHESTER [USC00241692], Chester, MT
- (3) TIBER DAM [USC00248233], Chester, MT
- (4) HARLEM [USC00243929], Harlem, MT
- (5) MALTA 7 E [USC00245338], Malta, MT
- (6) TURNER 11N [USC00248415], Turner, MT
- (7) CONRAD [USC00241974], Conrad, MT
- (8) SHELBY [USC00247500], Shelby, MT
- (9) GLASGOW [USW00094008], Glasgow, MT
- (10) HAVRE CITY CO AP [USW00094012], Havre, MT

Influencing water features

This is a semi-arid upland ecological site and the water budget is normally contained within the soil pedon. Steep slopes combined with bedrock at relatively shallow depths result in very high runoff potential. Intense precipitation events deliver large amounts of surface runoff downslope. Moisture loss through evapotranspiration exceeds precipitation for the majority of the growing season. Soil moisture levels are greatest in May and June; but rarely reach field capacity. Soil moisture is the primary limiting factor for plant production on this ecological site.

Soil features

The soil series that best represents the central concept of this ecological site are the Cabbart, Blacksheep, Delpoint, and Twilight soils. Cabbart and Blacksheep soils are in the Ustorthents great group. They are in the loamy family and are shallow (between 10 to 20 inches to bedrock). Delpoint and Twilight soils are in the Haplustepts great group and are moderately deep (20 to 40 inches) to bedrock. Delpoint soil is in the fine-loamy family and the Twilight soil is in the coarse-loamy family. All four of these soils have mixed mineralogy. All soils in this concept are characterized by a surface horizon that lacks enough organic matter to have a mollic epipedon and contact with lithic or paralithic bedrock less than 40 inches below the soil surface. The soil moisture regime for these and all other soils in this ecological site concept is ustic bordering on aridic, which means that the soils are moist in some or all parts for either 180 cumulative days or 90 consecutive days during the growing season but are dry in some or all parts for over 90 cumulative days. These soils have a frigid soil temperature regime (Soil Survey Staff, 2014).

Surface horizon textures found in this site are typically fine sandy loam, loam, silt loam, or sandy clay loam. The upper 4 inches of soil contains less than 35 percent clay and sand content is typically less than 70 percent. The underlying horizons are typically weakly developed and an argillic horizon is lacking. Subsurface textures are typically similar to the surface horizon. Organic matter content in the surface horizon typically ranges from 1 to 2 percent, and moist colors vary from yellowish brown (10YR 5/4) to very dark grayish brown (10YR 3/2). Calcium carbonate equivalent varies from 0 to 10 percent, but is typically more than 5 percent. In the upper 20 inches, electrical conductivity is less than 4 and the sodium absorption ratio is less than 13. Soil pH class is slightly acid to

strongly alkaline in the surface horizon and neutral to strongly alkaline in the subsurface horizons. The soil depth class for this site can vary from very shallow (less than 10 inches to bedrock) to moderately deep (20 to 40 inches to bedrock) and typically changes quickly on the landscape. Content of coarse fragments is less than 35 percent in the upper 20 inches of soil.

Table 4. Representative soil features

Parent material	(1) Residuum (2) Till
Surface texture	(1) Fine sandy loam (2) Loam (3) Silt loam (4) Sandy clay loam
Drainage class	Well drained
Soil depth	0–102 cm
Available water capacity (0-101.6cm)	5.33–13.21 cm
Calcium carbonate equivalent (0-12.7cm)	0–9%
Electrical conductivity (0-50.8cm)	0–3 mmhos/cm
Sodium adsorption ratio (0-50.8cm)	0–12
Soil reaction (1:1 water) (0-101.6cm)	6.1–9
Subsurface fragment volume ≤3" (0-50.8cm)	0–34%
Subsurface fragment volume >3" (0-50.8cm)	0–34%

Ecological dynamics

The information in this ecological site description, including the state-and-transition model (STM) (Figure 2), was developed based on historical data, current field data, professional experience, and a review of the scientific literature. As a result, all possible scenarios or plant species may not be included. Key indicator plant species, disturbances, and ecological processes are described to inform land management decisions.

The Thin Breaks Dry Grassland provisional ecological site in MLRA 52 Dry Grassland consists of three states: The Reference State (1), the Altered State (2), and the Invaded State (3). Plant communities associated with the Thin Breaks Dry Grassland ecological site evolved under the combined influences of climate, grazing, and fire. Extreme climatic variability results in frequent droughts, which have the greatest influence on the relative contribution of species cover and production (Coupland, 1958, 1961; Biondini et al., 1998). Due to the dominance of cool season graminoids, annual production is highly dependent upon mid- to late-spring precipitation (Heitschmidt and Vermeire, 2005; Anderson, 2006).

Native grazers also shaped these plant communities. American bison (*Bison bison*) were the dominant historic grazer, but pronghorn (*Antilocapra Americana*), elk (*Cervus canadensis*), and deer (*Odocoileus* spp.) were also common. Additionally, small mammals such as prairie dogs (*Cynomys* spp.), and ground squirrels (*Urocitellus* spp.) influenced this plant community (Salo et al., 2004). Grasshoppers and periodic outbreaks of Rocky Mountain locusts (*Melanoplus spretus*) also played an important role in the ecology of these communities (Lockwood, 2004).

The historic ecosystem also experienced relatively frequent lightning-caused fires with estimated fire return intervals of 6 to 25 years (Bragg, 1995). Historically, Native Americans also set frequent fires. The majority of lightning-caused fires occurred in July and August; whereas, Native Americans typically set fires during spring and fall to correspond with the movement of bison (Higgins, 1986). Generally, the mixedgrass ecosystem is resilient to fire and

primary effects of the historic fire return interval are reduction of litter and short-term fluctuations in production (Vermeire et al., 2011, 2014). However, studies have shown that shorter fire return intervals can have a negative effect, shifting species composition toward warm-season short-statured grasses (Shay et al., 2001; Smith and McDermid, 2014). It is not known how significant fire was on the Thin Breaks Dry Grassland ecological site. It is believed that the frequency of fire would be less than that of adjacent sites due to the broken topography and sparser vegetation but further investigation of fire dynamics is needed to better assess this assumption.

Improper grazing of this site can result in a reduction in the cover of the mid-statured grasses and an increase in blue grama (Smoliak et al., 1972; Smoliak, 1974). Improper grazing practices include any practices that do not allow sufficient opportunity for plants to physiologically recover from a grazing event or multiple grazing events within a given year and/or that do not provide adequate cover to prevent soil erosion over time. These practices may include, but are not limited to, overstocking, continuous grazing, and/or inadequate seasonal rotation moves over multiple years. Periods of extended drought (approximately 3 years or more) can reduce mid-statured, cool-season grasses, shifting the species composition of this community to one dominated by blue grama (Coupland, 1958, 1961). Further degradation of the site due to improper grazing can result in a community dominated by shortgrasses such as blue grama and Sandberg bluegrass.

Due to the steep slopes, this ecological site is generally not suitable for cropland. In general, this site has remained intact, although some acres have been invaded by aggressive, perennial introduced grasses, particularly crested wheatgrass. Seeding of introduced grasses, particularly crested wheatgrass (*Agropyron cristatum*), was a common practice in eroded and abandoned agricultural areas after the droughts of the 1930s (Rogler and Lorenz, 1983). Crested wheatgrass is a highly drought tolerant and competitive cool-season, perennial bunchgrass (DeLuca and Lesica, 1996). It can invade relatively undisturbed grasslands, reducing cover and production of native cool-season midgrasses (Heidinga and Wilson, 2002; Henderson and Naeth, 2005). Thin Breaks Dry Grassland ecological sites adjacent to these seeded areas are particularly prone to invasion.

The state-and-transition model (STM) diagram (Figure 2) suggests possible pathways that plant communities on this site may follow as a result of a given set of ecological processes and management. The site may also support states not displayed in the STM diagram. Landowners and land managers should seek guidance from local professionals before prescribing a particular management or treatment scenario. Plant community responses vary across this MLRA due to variability in weather, soils, and aspect. The reference community phase may not necessarily be the management goal. The lists of plant species and species composition values are provisional and are not intended to cover the full range of conditions, species, and responses for the site. Species composition by dry weight is provided when available and is considered provisional based on the sources identified in the narratives associated with each community phase.

State 1: Reference State

The Reference State (1) contains two community phases characterized by mid-statured cool-season rhizomatous grasses, mid-statured cool-season bunchgrasses, and threadleaf sedge, a deep-rooted densely tufted sedge. This state evolved under the combined influences of climate, grazing, and fire with climatic variation having the greatest influence on cover and production (Coupland, 1958, 1961; Biondini et al., 1998). In general, this state was resilient to grazing and fire, although these factors could influence species composition in localized areas.

Phase 1.1: Mixedgrass Community Phase

The Mixedgrass Community Phase (1.1) is characterized by mid-statured cool-season rhizomatous grasses, mid-statured cool-season bunchgrasses, and threadleaf sedge. The most abundant species are western wheatgrass and needle and thread. Thickspike wheatgrass (*Elymus lanceolatus*) may also be present, becoming abundant in the northern extent of this ecological site. Little bluestem is a warm-season bunchgrass that appears on this site near Havre and begins to increase moving eastward down the Milk River valley. Eventually, it becomes widespread in central Phillips and Valley Counties. When present, it occurs in monoculture patches that encompass approximately 10 percent of the site. Short-statured grasses, such as blue grama (*Bouteloua gracilis*), are not abundant in this phase but are generally present at low cover. Other species that may occur on this site are plains muhly (*Muhlenbergia cuspidata*), prairie Junegrass (*Koeleria macrantha*), and prairie sandreed (*Calamovilfa longifolia*). Common forbs are scarlet globemallow (*Sphaeralcea coccinea*), dotted blazing star (*Liatris punctata*), and spiny, or Hood's, phlox (*Phlox hoodii*). Shrubs and subshrubs are rare on this site, however, prairie, or fringed, sagebrush (*Artemisia frigida*), creeping juniper (*Juniperus horizontalis*), and silver sagebrush (*Artemisia cana*) can occur at low cover. The approximate species composition of the reference plant community is as follows:

Percent composition by weight*

- Rhizomatous Wheatgrass 20-25%
- Needle and Thread 20-25%
- Threadleaf Sedge 15%
- Little Bluestem 0-10%
- Blue Grama 5%
- Other Native Grasses 15%
- Perennial Forbs 10%
- Shrubs/Subshrubs 5%

Estimated Total Annual Production (lbs/ac)*

Low - 50

Representative Value - 350

High - 500

*Estimated based on current data – subject to revision

Phase 1.2: At Risk Community Phase

The At Risk Community Phase (1.2) is characterized by a shortgrass – threadleaf sedge community. Mid-statured grasses, such as needle and thread and rhizomatous wheatgrasses, are in decline. Shortgrasses, such as blue grama and prairie Junegrass, are in equal or greater proportion to mid-statured grasses and are increasing. Threadleaf sedge is common. Prairie sagewort may also increase in this phase. Bare ground increases in extent, making the site more susceptible to erosion by wind and water.

Community Phase Pathway 1.1a

Drought, improper grazing management, or a combination of these factors can shift the Mixedgrass Community Phase (1.1) to the At Risk Community Phase (1.2). These factors favor a decrease in cool-season midgrasses and an increase in shortgrasses (Coupland, 1961).

Community Phase Pathway 1.2a

Normal or above-normal spring precipitation and proper grazing management transitions the At Risk Community Phase (1.2) to the Mixedgrass Community Phase (1.1).

Transition T1A

Prolonged drought (approximately 3 years or more), improper grazing practices, or a combination of these factors weaken the resilience of the Reference State (1) and drive its transition to the Altered State (2). The Reference State (1) transitions to the Altered State (2) when cool-season midgrasses become rare and contribute little to production. Shortgrasses, particularly the warm-season, mat-forming blue grama, prairie Junegrass, and Sandberg bluegrass dominate the plant community.

Transition T1B

The Reference State (1) transitions to the Invaded State (3) when aggressive perennial grasses or noxious weeds invade the Reference State (1). Crested wheatgrass, in particular, can be a concern when native plant communities are adjacent to seeded pastures. Exotic plant species dominate the site in terms of cover and production. Site resilience has been substantially reduced and other rangeland health attributes, such as reproductive capacity of native grasses (Henderson and Naeth 2005) and soil quality (Smoliak and Dormaar, 1985; Dormaar et al., 1995), have been substantially altered from the Reference State (1).

State 2: Altered State

The Altered State (2) consists of two community phases. The dynamics of this state are driven by long-term drought, improper grazing management, or a combination of these factors. The Shortgrass Community Phase (2.1) is dominated by short-statured grasses such as blue grama. Mid-statured grasses have been eliminated or nearly so while vigor and production of threadleaf sedge are declining. When little bluestem is present, the Blue Grama – Little Bluestem Phase (2.2) may develop under certain conditions. Reductions in stocking rates can reduce shortgrass cover and increase the cover of cool-season midgrasses, although this recovery may take decades (Dormaar and Willms, 1990; Dormaar et al., 1994).

Phase 2.1 Shortgrass Community Phase

In the Shortgrass Community Phase (2.1), rhizomatous wheatgrasses and needle and thread have been largely

eliminated and replaced by short-statured species, such as blue grama and prairie Junegrass. Cover of threadleaf sedge has been reduced and vigor and production are declining. Fringed sagewort and, in some cases, creeping juniper may also increase in this phase. There is typically a high amount of bare ground, and erosional patterns and plant pedestaling are evident.

Phase 2.2: Blue Grama - Little Bluestem Community Phase

In areas where little bluestem is present, the Blue Grama – Little Bluestem Community Phase (2.2) may develop under certain conditions. Typically, little bluestem is regarded as desirable forage for cattle; however in MLRA 52, this grass is only palatable for a very short time. Pastures are commonly grazed in late summer or fall when little bluestem is mature and unpalatable. Under such conditions, livestock tend to avoid little bluestem. This combined with improper grazing management may result in the Blue Grama – Little Bluestem Community Phase (2.2). Dynamics of this phase are not well understood and require further investigation.

Transition T2A

The Altered State (2) transitions to the Invaded State (3) when aggressive perennial grasses or noxious weeds invade the Shortgrass Community Phase (2.1). Crested wheatgrass in particular, can be a concern when native plant communities are adjacent to seeded pastures. Exotic plant species dominate the site in terms of cover and production. Site resilience has been substantially reduced and other rangeland health attributes, such as reproductive capacity of native grasses (Henderson and Naeth, 2005) and soil quality (Smoliak and Dormaar, 1985; Dormaar et al., 1995), have been substantially altered from the Reference State (1).

Restoration Pathway R2A

A reduction in livestock grazing pressure alone may not be sufficient to reduce the cover of blue grama in the Altered State (2) (Dormaar and Willms, 1990). Intensive management treatments may be necessary (Hart et al., 1985), but practices such as grazing land mechanical treatment and range seeding may not be possible on this site due to topography. Therefore, returning the Altered State (2) to the Reference State (1) can require considerable energy, and cost, and may not be feasible within a reasonable amount of time.

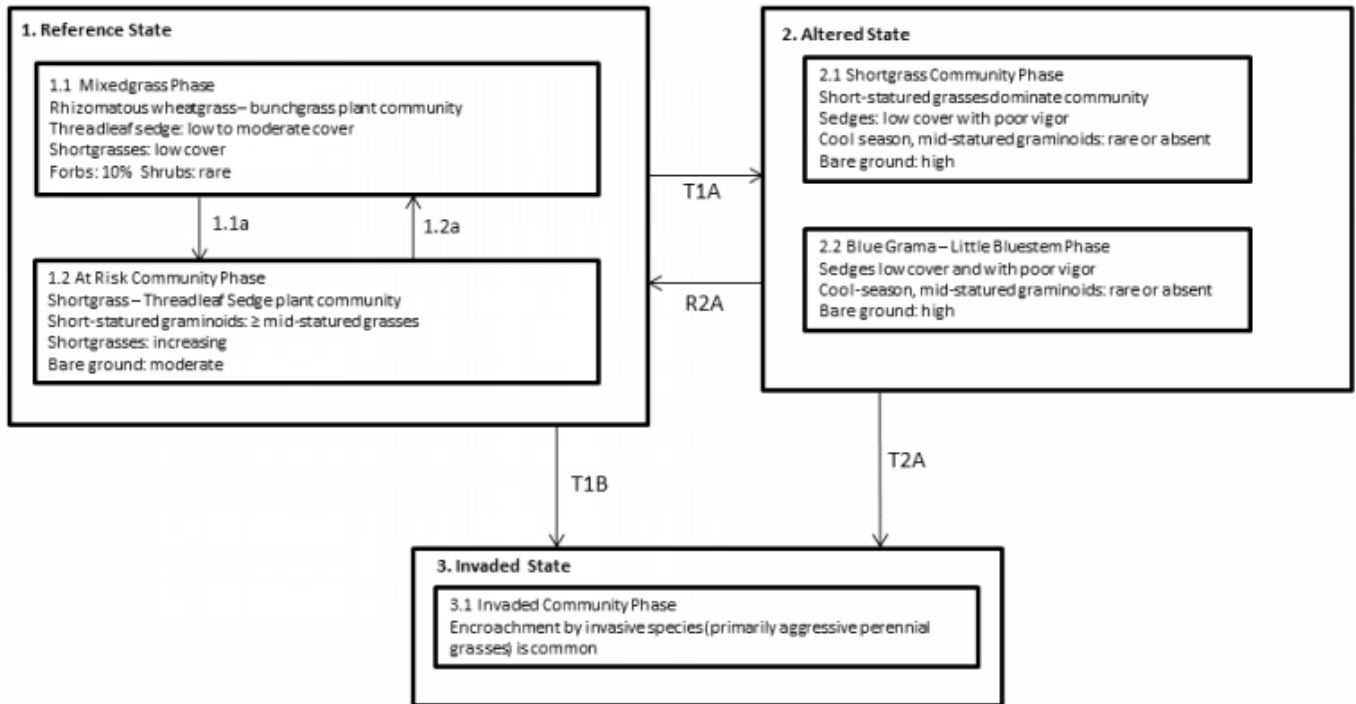
Invaded State 3

The Invaded State (3) occurs primarily when aggressive, introduced perennial grasses invade adjacent native grassland communities. Crested wheatgrass in particular, can be a concern especially when native plant communities are adjacent to seeded pastures. An estimated 20 million acres of crested wheatgrass have been planted in the western U.S. (Holechek, 1981). Crested wheatgrass produces abundant seeds that can dominate the seedbank of invaded grasslands (Henderson and Naeth, 2005), although crested wheatgrass cover decreases with increasing distance from seeded areas (Heidinga and Wilson, 2002). The early growth of crested wheatgrass allows this species to take advantage of early season soil moisture, which may result in competitive exclusion of native cool-season rhizomatous wheatgrasses and bunchgrasses such as needle and thread (Christian and Wilson, 1999; Heidinga and Wilson, 2002; Henderson and Naeth, 2005). Once established, monocultures of crested wheatgrass can persist for at least 60 years (Krzic et al., 2000; Henderson and Naeth, 2005). Reduced soil quality, (Dormaar et al., 1995), reduced plant species diversity, and simplified structural complexity (Henderson and Naeth, 2005) result in a state that is substantially departed from the Reference State (1).

Noxious weeds such as leafy spurge are uncommon on this site but may also invade and displace native species. These species are very aggressive. They typically displace native species and dominate ecological function when they invade a site. Sometimes, these species can be suppressed through intensive management (herbicide application, biological control, or intensive grazing management). Control efforts are unlikely to eliminate noxious weeds, but their density can be sufficiently suppressed so that species composition and structural complexity are similar to that of the Reference State (1). However, cessation of control methods will most likely result in recolonization of the site by the noxious species.

State and transition model

Thin Breaks Dry Grassland R52XY160MT



Legend

- 1.1a - drought, improper grazing management
- 1.2a - timely moisture, proper grazing management
- T1A - prolonged drought, improper grazing, or a combination of these factors
- T1B - introduction of non-native invasive species (primarily crested wheatgrass)
- T2A - introduction of weedy species; combined with drought and/or improper grazing management
- R2A - range seeding, timely moisture, intensive grazing management (management intensive and costly)

Figure 2. State-and-transition model (STM) diagram.

Inventory data references

Data for this provisional ecological site was obtained from seven low-intensity plots and one medium-intensity plot. Additional information was obtained from professional experience and a review of the scientific literature. All community phases are considered provisional based on these plots and the sources identified in this ecological site description.

Other references

- Adams, B.W., et al. 2013. Rangeland plant communities for the dry mixedgrass natural subregion of Alberta. Second approximation. Rangeland Management Branch, Policy Division, Alberta Environment and Sustainable Resource Development, Lethbridge, Pub. No. T/040.
- Anderson, R.C. 2006. Evolution and origin of the central grassland of North America: Climate, fire, and mammalian grazers. *Journal of the Torrey Botanical Society* 133:626-647.
- Baskin, J.M., and C.C. Baskin. 1981. Ecology of germination and flowering in the weedy winter annual grass *Bromus japonicus*. *Journal of Range Management* 34:369-372.
- Biondini, M.E., and L. Manske. 1996. Grazing frequency and ecosystem processes in a northern mixed prairie, USA. *Ecological Applications* 6:239-256.
- Biondini, M.E., B.D. Patton, and P.E. Nyren. 1998. Grazing intensity and ecosystem processes in a northern mixed-grass prairie, USA. *Ecological Applications* 8:469-479.
- Bloom-Cornelius, I.V. 2011. Vegetation response to fire and domestic and native ungulate herbivory in a Wyoming

big sagebrush ecosystem. M.S. thesis, Oklahoma State University. Stillwater, OK.

Bragg, T.B. 1995. The physical environment of the Great Plains grasslands. In: A. Joern and K.H. Keeler (eds.) *The Changing Prairie*, Oxford University Press, Oxford, pp. 49–81.

Branson, D.H., and G.A. Sword. 2010. An experimental analysis of grasshopper community responses to fire and livestock grazing in a northern mixed-grass prairie. *Environmental Entomology* 39:1441-1446.

Bylo, L.N., N. Koper, and K.A. Molloy. 2014. Grazing intensity influences ground squirrel and American badger habitat use in mixed-grass prairies. *Rangeland Ecology and Management* 67:247-254.

Christian, J.M., and S.D. Wilson. 1999. Long-term ecosystem impacts of an introduced grass in the Northern Great Plains. *Ecology* 80:2397-2407.

Clarke, S.E, E.W. Tisdale, and N.A. Skoglund. 1947. The effects of climate and grazing practices on short-grass prairie vegetation in southern Alberta and southwestern Saskatchewan. Canadian Department of Agriculture Technical Bulletin No. 46.

Cleland, D.T., et al. 1997. National hierarchical framework of ecological units. In: M.S. Boyce and A. Haney (eds.) *Ecosystem Management Applications for Sustainable Forest and Wildlife Resources*, Yale University Press, New Haven, CT.

Cooper, S.V., C. Jean, and P. Hendricks. 2001. Biological survey of a prairie landscape in Montana's glaciated plains. Report to the Bureau of Land Management. Montana Natural Heritage Program, Helena, MT.

Cooper, S.V., and W.M. Jones. 2003. Site descriptions of high-quality wetlands derived from existing literature sources. Report to the Montana Department of Environmental Quality. Montana Natural Heritage Program, Helena, MT.

Coupland, R.T. 1950. Ecology of the mixed prairie of Canada. *Ecological Monographs* 20:271-315.

Coupland, R.T. 1958. The effects of fluctuations in weather upon the grasslands of the Great Plains. *Botanical Review* 24:273-317.

Coupland, R.T. 1961. A reconsideration of grassland classification in the Northern Great Plains of North America. *Journal of Ecology* 49:135-167.

Coupland, R.T., and R.E. Johnson. 1965. Rooting characteristics of native grassland species in Saskatchewan. *Journal of Ecology* 53:475-507.

Cowardin, L.M., V. Carter, F.C. Golet, and E.T. LaRoe. 1979. Classification of wetlands and deepwater habitats of the United States. US Fish and Wildlife Service FWS/OBS, 79(31), 131.

Crowe, E., and G. Kudray. 2003. Wetland Assessment of the Whitewater Watershed. Report to U.S. Bureau of Land Management, Malta Field Office. Montana Natural Heritage Program, Helena, MT.

Davis, S.K., R.J. Fisher, S.L. Skinner, T.L. Shaffer, and R.M. Brigham. 2013. Songbird abundance in native and planted grassland varies with type and amount of grassland in the surrounding landscape. *Journal of Wildlife Management* 77:908-919.

DeKeyser, E.S., M. Meehan, G. Clambey, and K. Krabbenhoft. 2013. Cool season invasive grasses in northern Great Plains natural areas. *Natural Areas Journal* 33:81-90.

DeKeyser, S., G. Clambey, K. Krabbenhoft, and J. Ostendorf. 2009. Are changes in species composition on central North Dakota rangelands due to non-use management? *Rangelands* 31:16-19.

DeLuca, T.H., and P. Lesica. 1996. Long-term harmful effects of crested wheatgrass on Great Plains grassland ecosystems. *Journal of Soil and Water Conservation* 51:408-409.

- Derner, J.D., and R.H. Hart. 2007. Grazing-induced modifications to peak standing crop in northern mixed-grass prairie. *Rangeland Ecology and Management* 60:270-276.
- Derner, J.D., and A.J. Whitman. 2009. Plant interspaces resulting from contrasting grazing management in northern mixed-grass prairie: Implications for ecosystem function. *Rangeland Ecology and Management* 62:83-88.
- Derner, J.D., W.K. Lauenroth, P. Stapp, and D.J. Augustine. 2009. Livestock as ecosystem engineers for grassland bird habitat in the western Great Plains of North America. *Rangeland Ecology and Management* 62:111-118.
- Dix, R.L. 1960. The effects of burning on the mulch structure and species composition of grasslands in western North Dakota. *Ecology* 41:49-56.
- Dormaer, J.F., and S. Smoliak. 1985. Recovery of vegetative cover and soil organic matter during revegetation of abandoned farmland in a semiarid climate. *Journal of Range Management* 38:487-491.
- Dormaer, J.F., and W.D. Willms. 1990. Effect of grazing and cultivation on some chemical properties of soils in the mixed prairie. *Journal of Range Management* 43:456-460.
- Dormaer, J.F., B.W. Adams, and W.D. Willms. 1994. Effect of grazing and abandoned cultivation on a *Stipa-Bouteloua* community. *Journal of Range Management* 47:28-32.
- Dormaer, J.F., M.A. Naeth, W.D. Willms, and D.S. Chanasyk. 1995. Effect of native prairie, crested wheatgrass (*Agropyron cristatum*) and Russian wildrye (*Elymus junceus*) on soil chemical properties. *Journal of Range Management* 48:258-263.
- Fansler, V.A., and J.M. Mangold. 2010. Restoring native plants to crested wheatgrass stands. *Restoration Ecology* 19:16-23.
- Federal Geographic Data Committee. 2008. The National Vegetation Classification Standard, Version 2. FGDC Vegetation Subcommittee. FGDC-STD-005-2008 (Version 2). pp. 126.
- Fullerton, D.S., and R.B. Colton. 1986. Stratigraphy and correlation of the glacial deposits on the Montana Plains. U.S. Geological Survey.
- Fullerton, D.S., R.B. Colton, C.A. Bush, and A.W. Straub. 2004. Map showing spatial and temporal relations of mountain and continental glaciations on the northern plains, primarily in northern Montana and northwestern North Dakota. U.S. Geologic Survey pamphlet accompanying Scientific Investigations Map 2843.
- Fullerton, D.S., R.B. Colton, and C.A. Bush. 2013. Quaternary geologic map of the Shelby 1° x 2° quadrangle, Montana: U.S. Geological Survey Open-File Report 2012–1170, scale 1:250,000.
- Galatowitsch, S.M., and A.G. Van der Valk. 1996. The vegetation of restored and natural prairie wetlands. *Ecological Applications*. 6:1 pp.102-112.
- Gilbert, M.C., P.M. Whited, E.J. Clairain Jr., and R.D. Smith. 2006. A regional guidebook for applying the hydrogeomorphic approach to assessing wetland functions of prairie potholes. U.S. Army Corps of Engineers Final Report, Washington, DC.
- Grant, T.A., B. Flanders-Wanner, T.L. Shaffer, R.K. Murphy, and G.A. Knutsen. 2009. An emerging crisis across northern prairie refuges: Prevalence of invasive plants and a plan for adaptive management. *Ecological Restoration* 27:58-65.
- Haferkamp, M.R., R.K. Heitschmidt, and M.G. Karl. 1997. Influence of Japanese brome on western wheatgrass yield. *Journal of Range Management* 50:44-50.
- Hansen, P.L., et al. 1995. Classification and management of Montana's riparian and wetland sites. University of Montana, Montana Forest and Conservation Experiment Station, Miscellaneous Publication No. 54.

- Harmoney, K.R. 2007. Grazing and burning Japanese brome (*Bromus japonicus*) on mixed grass rangelands. *Rangeland Ecology and Management* 60:479-486.
- Hart, M., S.S. Waller, S.R. Lowry, and R.N. Gates. 1985. Disking and seeding effects on sod bound mixed prairie. *Journal of Range Management* 38:121-125.
- Heidel, B., S.V. Cooper, and C. Jean. 2000. Plant species of special concern and plant associations of Sheridan County, Montana. Report to U.S. Fish and Wildlife Service. Montana Natural Heritage Program, Helena, Montana, MT.
- Heidinga, L., and S.D. Wilson. 2002. The impact of an invading alien grass (*Agropyron cristatum*) on species turnover in native prairie. *Diversity and Distributions* 8:249-258.
- Heitschmidt, R.K., and L.T. Vermeire. 2005. An ecological and economic risk avoidance drought management decision support system. In: J.A. Milne (ed.) *Pastoral Systems in Marginal Environments*, XXth International Grasslands Congress, July 2005, p. 178.
- Henderson, A.E., and S.K. Davis. 2014. Rangeland health assessment: A useful tool for linking range management and grassland bird conservation? *Rangeland Ecology and Management* 67:88-98.
- Henderson, D.C., and M.A. Naeth. 2005. Multi-scale impacts of crested wheatgrass invasion in mixed-grass prairie. *Biological Invasions* 7:639-650.
- Herrick, J.E., J.W. Van Zee, K.M. Havstad, L.M. Burkett, and W.G. Whitford. 2009. Monitoring manual for grassland, shrubland and savanna ecosystems. U.S. Department of Agriculture, Agricultural Research Service, Jornada Experimental Range, Las Cruces, NM.
- Higgins, K.F. 1986. Interpretation and compendium of historical fire accounts in the Northern Great Plains. U.S. Fish and Wildlife Service Resource Publication 161.
- Holechek, J.L. 1981. Crested wheatgrass. *Rangelands* 3:151-153.
- Howard, J.L. 1999. *Artemisia tridentata* subsp. *wyomingensis*. In: Fire Effects Information System, U.S. Department of Agriculture, Forest Service <http://www.fs.fed.us/database/feis/plants/shrub/arttriw/all.html> (accessed 8/11/2016).
- Joern, A. 2005. Disturbance by fire frequency and bison grazing modulate grasshopper assemblages in tallgrass prairie. *Ecology* 86:861-873.
- Jones, W.M. 2004. Using vegetation to assess wetland condition: a multimetric approach for temporarily and seasonally flooded depressional wetlands and herbaceous-dominated intermittent and ephemeral riverine wetlands in the northwestern glaciated plains ecoregion, Montana. Report to the Montana Department of Environmental Quality and the U.S. Environmental Protection Agency. Montana Natural Heritage Program, Helena, MT.
- Knopf, F.L. 1996. Prairie legacies—birds. In: F.B. Samson and F.L. Knopf (eds.) *Prairie Conservation: Preserving North America's Most Endangered Ecosystem*, Island Press, Washington, DC, pp. 135-148.
- Knopf, F.L., and F.B. Samson. 1997. Conservation of grassland vertebrates. In: F.B. Samson and F.L. Knopf (eds.) *Ecology and Conservation of Great Plains Vertebrates: Ecological Studies* 125, Springer-Verlag, New York, NY, pp. 273-289.
- Krzic, M., K. Broersma, D.J. Thompson, and A.A. Bomke. 2000. Soil properties and species diversity of grazed crested wheatgrass and native rangelands. *Journal of Range Management* 53:353-358.
- Lacey, J., R. Carlstrom, and K. Williams. 1995. Chiseling rangeland in Montana. *Rangelands* 17:164-166.
- Lauenroth, W.K., O.E. Sala, D.P. Coffin, and T.B. Kirchner. 1994. The importance of soil water in recruitment of *Bouteloua gracilis* in the shortgrass steppe. *Ecological Applications* 4:741-749.

- Laycock, W.A. 1988. History of grassland plowing and grass planting on the Great Plains. In: J.E. Mitchell (ed.) *Impacts of the Conservation Reserve Program in the Great Plains—Symposium Proceedings, September 16-18, 1987*. USDA Forest Service, Rocky Mountain Forest and Range Experiment Station, General Technical Report RM-158.
- Laycock, W.A. 1991. Stable states and thresholds of range condition on North American rangelands. *Journal of Range Management* 44:427-433.
- Lesica, P., and P. Husby. 2006. *Field Guide to Montana's Wetland Vascular Plants*. Montana Wetlands Trust. Helena, MT.
- Lockwood, J.A. 2004. *Locust: The devastating rise and mysterious disappearance of the insect that shaped the American frontier*. Basic Books, New York, NY.
- Looman, J., and D.H. Heinrichs. 1973. Stability of crested wheatgrass pastures under long-term pasture use. *Canadian Journal of Plant Science* 53:501-506.
- Madden, E.M., R.K. Murphy, A.J. Hansen, and L. Murray. 2000. Models for guiding management of prairie bird habitat in northwestern North Dakota. *American Midland Naturalist* 144:377-392.
- McNab, W.H., et al. 2007. Description of ecological subregions: Sections of the conterminous United States [CD-ROM]. USDA Forest Service, General Technical Report WO-76B.
- McIntyre, C., K. Newlon, L. Vance, and M. Burns. 2011. Milk, Marias, and St. Mary monitoring: developing a long-term rotating basin wetland assessment and monitoring strategy for Montana. Report to the United States Environmental Protection Agency. Montana Natural Heritage Program, Helena, MT.
- Miller, J.J., and J.A. Brierley. 2011. Solonchetsic soils of Canada: Genesis, distribution, and classification. *Canadian Journal of Soil Science* 91:889-902.
- Montana State College. 1949. Similar vegetative rangeland types in Montana. Montana State College, Agricultural Experiment Station.
- Mushet, D.M., N.H. Euliss, Jr., and C.A. Stockwell. 2012. A conceptual model to facilitate amphibian conservation in the Northern Great Plains. *Great Plains Research* 22:45-58.
- Nesser, J.A., G.L. Ford, C.L. Maynard, and D.S. Page-Dumroese. 1997. Ecological units of the Northern Region: Subsections. USDA Forest Service, Intermountain Research Station, General Technical Report INT-GTR-369.
- Oard, M.J. 1993. A method of predicting chinook winds east of the Montana Rockies. *Weather and Forecasting* 8:166-180.
- Ogle, S.M., W.A. Reiners, and K.G. Gerow. 2003. Impacts of exotic annual brome grasses (*Bromus* spp.) on ecosystem properties of the northern mixed grass prairie. *American Midland Naturalist* 149:46-58.
- Roath, L.R. 1988. Implications of land conversions and management for the future. In: J.E. Mitchell (ed.) *Impacts of the Conservation Reserve Program in the Great Plains—Symposium Proceedings, September 16-18, 1987*. USDA Forest Service, Rocky Mountain Forest and Range Experiment Station, General Technical Report RM-158.
- Rogler, G.A., and R.J. Lorenz. 1983. Crested wheatgrass: Early history in the United States. *Journal of Range Management* 36:91-93.
- Romo, J.T. 2011. Clubmoss, precipitation, and microsite effects on emergence of graminoid and forb seedlings in the semiarid northern mixed prairie of North America. *Journal of Arid Environments* 75:98-105.
- Rowe, J.S. 1969. Lightning fires in Saskatchewan grassland. *Canadian Field Naturalist* 83:317-327.

- Salo, E.D., et al. 2004. Grazing intensity effects on vegetation, livestock and non-game birds in North Dakota mixed-grass prairie. *Proceedings of the 19th North American Prairie Conference*, Madison, WI.
- Samuel, M.J., and R.H. Hart. 1994. Sixty-one years of secondary succession on rangelands of the Wyoming High Plains. *Journal of Range Management* 47:184-191.
- Semlitsch, R.D. 2000. Principles for management of aquatic-breeding amphibians. *Journal of Wildlife Management* 64:615-631.
- Shay, J., D. Kunec, and B. Dyck. 2001. Short-term effects of fire frequency on vegetation composition and biomass in mixed prairie in south-western Manitoba. *Plant Ecology* 155:157-167.
- Smith, B., and G.J. McDermid. 2014. Examination of fire-related succession within the dry mixed-grass subregion of Alberta with the use of MODIS and Landsat. *Rangeland Ecology and Management* 67:307-317.
- Smith, R.E. 2013. Conserving Montana's sagebrush highway: Long distance migration in sage-grouse. M.S. thesis, University of Montana, Missoula, MT.
- Smoliak, S. 1974. Range vegetation and sheep production at three stocking rates on *Stipa-Bouteloua* prairie. *Journal of Range Management* 27:23-26.
- Smoliak, S., and J.F. Dormaar. 1985. Productivity of Russian wildrye and crested wheatgrass and their effect on prairie soils. *Journal of Range Management* 38:403-405.
- Smoliak, S., J.F. Dormaar, and A. Johnston. 1972. Long-term grazing effects on *Stipa-Bouteloua* prairie soils. *Journal of Range Management* 25:246-250.
- Soil Survey Staff. 2014. Keys to soil taxonomy, 12th edition. USDA Natural Resources Conservation Service.
- Soller, D.R. 2001. Map showing the thickness and character of Quaternary sediments in the glaciated United States east of the Rocky Mountains. U.S. Geological Survey Miscellaneous Investigations Series I-1970-E, scale 1:3,500,000.
- Stephens, S.E., J.J. Rotella, M.S. Lindberg, M.L. Taper, and J.K. Ringelman. 2005. Duck nest survival in the Missouri Coteau of North Dakota: Landscape effects at multiple spatial scales. *Ecological Applications* 15:2137-2149.
- Stewart, R.E., and H.A. Kantrud. 1971. Classification of natural ponds and lakes in the glaciated prairie region. No. 92. US Fish and Wildlife Service, Bureau of Sport Fisheries and Wildlife.
- Tiner, R.W. 2003. Correlating Enhanced National Wetlands Inventory Data with Wetland Functions for Watershed Assessments: A Rationale for Northeastern U.S. Wetlands. U.S. Fish and Wildlife Service, National Wetlands Inventory Program, Region 5, Hadley, MA.
[http://www.fws.gov/northeast/wetlands/pdf/CorrelatingEnhancedNWIDataWetlandFunctionsWatershedAssessments\[1\].pdf](http://www.fws.gov/northeast/wetlands/pdf/CorrelatingEnhancedNWIDataWetlandFunctionsWatershedAssessments[1].pdf).
- Toledo, D., M. Sanderson, K. Spaeth, J. Hendrickson, and J. Printz. 2014. Extent of Kentucky bluegrass and its effect on native plant species diversity and ecosystem services in the Northern Great Plains of the United States. *Invasive Plant Science and Management* 7:543-552.
- Umbanhowar, Jr., C.E. 2004. Interactions of climate and fire at two sites in the Northern Great Plains. *Palaeogeography, Palaeoclimatology, and Palaeoecology* 208:141-152.
- U.S. Department of Agriculture, Natural Resources Conservation Service. Glossary of landform and geologic terms. National Soil Survey Handbook, Title 430-VI, Part 629.02c.
http://www.nrcs.usda.gov/wps/portal/nrcs/detail/soils/ref/?cid=nrcs142p2_054242 (accessed 13 April 2016).
- U.S. Fish and Wildlife Service. 2013. Greater sage-grouse (*Centrocercus urophasianus*) conservation objectives:

Final report.

Vance, L., S. Owen, and J. Horton. 2013. Literature review: Hydrology-ecology relationships in Montana prairie wetlands and intermittent/ephemeral streams. Report to the Cadmus Group and the U.S. Environmental Protection Agency. Montana Natural Heritage Program, Helena, MT.

Van Dyne, G.M., and W.G. Vogel. 1967. Relation of *Selaginella densa* to site, grazing, and climate. *Ecology* 48:438-444.

Vaness, B.M., and S.D. Wilson. 2007. Impact and management of crested wheatgrass (*Agropyron cristatum*) in the northern Great Plains. *Canadian Journal of Plant Science* 87:1023-1028.

Vermeire, L.T., J.L. Crowder, and D.B. Wester. 2011. Plant community and soil environment response to summer fire in the northern Great Plains. *Rangeland Ecology & Management* 64:37-46.

Vermeire, L.T., J.L. Crowder, and D.B. Wester. 2014. Semiarid rangeland is resilient to summer fire and postfire grazing utilization. *Rangeland Ecology & Management* 67:52-60.

Vuke, S.M., K.W. Porter, J.D. Lonn, and D.A. Lopez. 2007. Geologic map of Montana - information booklet: Montana Bureau of Mines and Geology Geologic Map 62-D.

Wambolt, C.L., K.S. Walhof, and M.R. Frisina. 2001. Recovery of big sagebrush communities after burning in southwestern Montana. *Journal of Environmental Management*. 61:243-252.

Watts, M.J., and C.L. Wambolt. 1996. Long-term recovery of Wyoming big sagebrush after four treatments. *Journal of Environmental Management* 46:95-102.

Whisenant, S.G. 1990. Postfire population dynamics of *Bromus japonicus*. *American Midland Naturalist* 123:301-308.

Wilson, S.D., and J.M. Shay. 1990. Competition, fire, and nutrients in a mixed-grass prairie. *Ecology* 71:1959-1967.

With, K.A. 2010. McCown's longspur (*Rhynchophanes mccownii*). In: A. Poole (ed.) *The Birds of North America* (online), Cornell Lab of Ornithology, Ithaca. <http://bna.birds.cornell.edu/bna/species/09>.

Contributors

Scott Brady
Stuart Veith

Approval

Scott Brady, 8/16/2019

Acknowledgments

This provisional ecological site description could not have been completed without the contributions of Karen Newlon. She conducted an extensive literature review, which provided most of the background information for this project as well as many of the references. She also co-authored the Loamy and Thin Claypan Dry Grassland ecological sites previously prepared in MLRA 52.

A number of USDA-NRCS and USDI-BLM staff supported this project. Staff contributions are as follows:

Soil Concepts, Soils Information, and Field Descriptions
Charlie French, USDA-NRCS
Josh Sorlie, USDI-BLM

NASIS Reports, Data Dumps, and Soil Sorts

Bill Drummond, USDA-NRCS
Pete Weikle, USDA-NRCS

Peer Review and Beta Testing
Kirt Walstad, USDA-NRCS
Kyle Steele, formerly USDA-NRCS
Kelsey Molloy, USDA-NRCS
Rick Caquelin, USDA-NRCS
Josh Sorlie, USDI-BLM
BJ Rhodes, USDI-BLM

Editing
Ann Kinney, USDA-NRCS
Jenny Sutherland, USDA-NRCS

Quality Control
Kirt Walstad, USDA-NRCS

Quality Assurance
Stacey Clark, USDA-NRCS

Rangeland health reference sheet

Interpreting Indicators of Rangeland Health is a qualitative assessment protocol used to determine ecosystem condition based on benchmark characteristics described in the Reference Sheet. A suite of 17 (or more) indicators are typically considered in an assessment. The ecological site(s) representative of an assessment location must be known prior to applying the protocol and must be verified based on soils and climate. Current plant community cannot be used to identify the ecological site.

Author(s)/participant(s)	
Contact for lead author	
Date	
Approved by	
Approval date	
Composition (Indicators 10 and 12) based on	Annual Production

Indicators

1. **Number and extent of rills:**

2. **Presence of water flow patterns:**

3. **Number and height of erosional pedestals or terracettes:**

4. **Bare ground from Ecological Site Description or other studies (rock, litter, lichen, moss, plant canopy are not bare ground):**

5. **Number of gullies and erosion associated with gullies:**
-
6. **Extent of wind scoured, blowouts and/or depositional areas:**
-
7. **Amount of litter movement (describe size and distance expected to travel):**
-
8. **Soil surface (top few mm) resistance to erosion (stability values are averages - most sites will show a range of values):**
-
9. **Soil surface structure and SOM content (include type of structure and A-horizon color and thickness):**
-
10. **Effect of community phase composition (relative proportion of different functional groups) and spatial distribution on infiltration and runoff:**
-
11. **Presence and thickness of compaction layer (usually none; describe soil profile features which may be mistaken for compaction on this site):**
-
12. **Functional/Structural Groups (list in order of descending dominance by above-ground annual-production or live foliar cover using symbols: >>, >, = to indicate much greater than, greater than, and equal to):**
- Dominant:
- Sub-dominant:
- Other:
- Additional:
-
13. **Amount of plant mortality and decadence (include which functional groups are expected to show mortality or decadence):**
-
14. **Average percent litter cover (%) and depth (in):**
-
15. **Expected annual annual-production (this is TOTAL above-ground annual-production, not just forage annual-production):**
-
16. **Potential invasive (including noxious) species (native and non-native). List species which BOTH characterize degraded states and have the potential to become a dominant or co-dominant species on the ecological site if**

their future establishment and growth is not actively controlled by management interventions. Species that become dominant for only one to several years (e.g., short-term response to drought or wildfire) are not invasive plants. Note that unlike other indicators, we are describing what is NOT expected in the reference state for the ecological site:

17. Perennial plant reproductive capability:
