

## Ecological site FX052X03X062 Swale (Se) Dry Shrubland

Last updated: 7/08/2019  
Accessed: 05/13/2025

### General information

**Provisional.** A provisional ecological site description has undergone quality control and quality assurance review. It contains a working state and transition model and enough information to identify the ecological site.

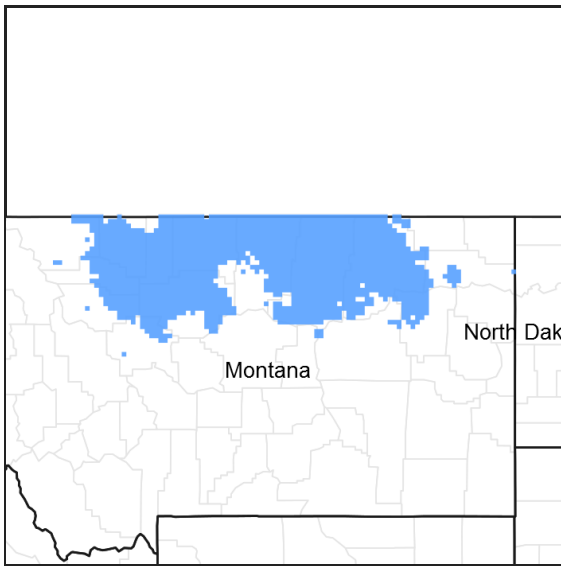


Figure 1. Mapped extent

Areas shown in blue indicate the maximum mapped extent of this ecological site. Other ecological sites likely occur within the highlighted areas. It is also possible for this ecological site to occur outside of highlighted areas if detailed soil survey has not been completed or recently updated.

### MLRA notes

Major Land Resource Area (MLRA): 052X–Brown Glaciated Plains

The Brown Glaciated Plains, MLRA 52, is an expansive, agriculturally and ecologically significant area. It consists of approximately 14.5 million acres and stretches across 350 miles from east to west, encompassing portions of 15 counties in north-central Montana. This region represents the southwestern limit of the Laurentide Ice Sheet and is considered to be the driest and westernmost area within the vast network of glacially derived prairie pothole landforms of the northern Great Plains. Elevation ranges from 2,000 feet (610 meters) to 4,600 feet (1,400 meters).

Soils are primarily Mollisols, but Entisols, Inceptisols, Alfisols, and Vertisols are also common. Till from continental glaciation is the predominant parent material, but alluvium and bedrock are also common. Till deposits are typically less than 50 feet thick, and in some areas glacially deformed bedrock occurs at or near the soil surface (Soller, 2001). Underlying sedimentary bedrock largely consisting of Cretaceous shale, sandstone, and mudstone (Vuke et al., 2007) is commonly exposed on hillslopes, particularly along drainageways. Significant alluvial deposits occur along glacial outwash channels and major drainages, including portions of the Missouri, Teton, Marias, Milk, and Frenchman Rivers. Large glacial lakes, particularly in the western half of the MLRA, deposited clayey and silty lacustrine sediments (Fullerton et al., 2013).

Much of the western portion of this MLRA was glaciated towards the end of the Wisconsin age, and the maximum glacial extent occurred approximately 20,000 years ago (Fullerton et al., 2004). The result is a geologically young

landscape that is predominantly a level till plain interspersed with lake plains and dominated by soils in the Mollisol and Vertisol orders. These soils are very productive and generally are well suited to dryland farming. Much of this area is aridic-ustic. Crop-fallow dryland wheat farming is the predominant land use. Areas of rangeland typically are on steep hillslopes along drainages.

The rangeland, much of which is native mixedgrass prairie, increases in abundance in the eastern half of the MLRA. The Wisconsin-age till in the north-central part of this area typically formed large disintegration moraines with steep slopes and numerous poorly drained potholes. A large portion of Wisconsin-age till occurring on the type of level terrain that would typically be optimal for farming has large amounts of less-suitable sodium-affected Natrustalfs. Significant portions of Blaine, Phillips, and Valley Counties were glaciated approximately 150,000 years ago during the Illinoian age. Due to erosion and dissection of the landscape, many of these areas have steeper slopes and more exposed bedrock than areas glaciated during the Wisconsin age (Fullerton and Colton, 1986).

While much of the rangeland in the aridic-ustic portion of MLRA 52 is classified as belonging to the “dry grassland” climatic zone, sites in portions of southern MLRA 52 may belong to the “dry shrubland” climatic zone. The dry shrubland zone represents the northernmost extent of the big sagebrush (*Artemisia tridentata*) steppe on the Great Plains. Because similar soils occur in both southern and northern portions of the MLRA, it is currently hypothesized that climate is the primary driving factor affecting big sagebrush distribution in this area. However, the precise factors are not fully understood at this time.

Sizeable tracts of largely unbroken rangeland in the eastern half of the MLRA and adjacent southern Saskatchewan are home to the Northern Montana population of greater sage-grouse (*Centrocercus urophasianus*), and large portions of this area are considered to be a Priority Area for Conservation (PAC) by the U.S. Fish and Wildlife Service (U.S. Fish and Wildlife Service, 2013). This population is unique among sage grouse populations in the fact that many individuals overwinter in the big sagebrush steppe (dry shrubland) in the southern portion of the MLRA and then migrate to the northern portion of the MLRA, which lacks big sagebrush (dry grassland), to live the rest of the year (Smith, 2013).

Areas of the till plain near the Bearpaw and Highwood Mountains as well as the Sweetgrass Hills and Rocky Mountain foothills are at higher elevations, receive higher amounts of precipitation, and have a typic-ustic moisture regime. These areas have significantly more rangeland production than the drier aridic-ustic portions of the MLRA and have enough moisture to produce crops annually rather than just bi-annually, as in the drier areas. Ecological sites in this higher precipitation area are classified as the moist grassland climatic zone.

## **Classification relationships**

### **NRCS Soil Geography Hierarchy**

- Land Resource Region: Northern Great Plains
- Major Land Resource Area (MLRA): 052 Brown Glaciated Plains
- Climate Zone: Dry Shrubland

### **National Hierarchical Framework of Ecological Units (Cleland et al., 1997; McNab et al., 2007)**

- Domain: Dry
- Division: Temperate Steppe
- Province: Great Plains-Palouse Dry Steppe Province 331
- Section: Northwestern Glaciated Plains 331D
- Subsection: Montana Glaciated Plains 331Dh
- Landtype Association/Landtype Phase: N/A

### **National Vegetation Classification Standard (Federal Geographic Data Committee, 2008)**

- Class: Xeromorphic Woodland, Scrub and Herb Vegetation Class (3)
- Subclass: Cool Semi-Desert Scrub and Grassland Subclass (3.B)
- Formation: Cool Semi-Desert Scrub and Grassland Formation (3.B.1)
- Division: Cool Semi-Desert Scrub and Grassland Division (3.B.1.Ne)
- Macrogroup: *Artemisia tridentata* — *Artemisia tripartita* ssp. *tripartita* — *Purshia tridentata* Steppe and Shrubland Macrogroup (3.B.1.Ne.3)
- Group: *Artemisia tridentata* — *Artemisia tripartita* — *Purshia tridentata* Big Sagebrush Steppe and Shrubland Group (3.B.1.Ne.3.b)

- Alliance: *Artemisia tridentata* ssp. *wyomingensis* Mesic Steppe and Shrubland Alliance
- Association: No existing correlation

#### EPA Ecoregions

- Level 1: Great Plains (9)
- Level 2: West-Central Semi-Arid Prairies (9.3)
- Level 3: Northwestern Glaciated Plains (42)
- Level 4: North-Central Brown Glaciated Plains (42o) and Glaciated Northern Grasslands (42j)

### Ecological site concept

This provisional ecological site occurs in the Dry Shrubland climatic zone of MLRA 52. Map units shown in Figure 1 contain minor components of this ecological site, typically less than 10 percent of the map unit composition. This map is approximate, is not intended to be definitive, and may be subject to change. Onsite evaluations are necessary, particularly in boundary or intergrade areas where ecological sites from multiple climate zones may overlap. Swale Dry Shrubland is an extensive ecological site on till plains, moraines, and fans in MLRA 52. Although present in the vast majority of soil map units, it is nearly always a minor component because it occurs on swale microfeatures. A swale is defined as a shallow, open depression in unconsolidated materials which lacks a defined channel but can funnel overland or subsurface flow into a drainageway (USDA-NRCS, 2016).

The distinguishing characteristic of this site is that it receives additional moisture via surface runoff from adjacent sites. Soils for this ecological site may range from moderately deep (between 20 to 40 inches to bedrock) to very deep (greater than 60 inches to bedrock), but are typically very deep and derived from local alluvium. This ecological site may occur on slopes of up to 15 percent, but most commonly occurs on slopes of 8 percent or less. Soil surface textures (0 to 4 inches) are typically loam to clay loam. In some areas, but not all, the soils have a mollic epipedon. This site is more productive than surrounding sites due to the increased available moisture. Characteristic vegetation is green needlegrass (*Nassella viridula*) and western wheatgrass (*Pascopyrum smithii*). Thickspike wheatgrass (*Elymus lanceolatus*) may also occur on this site, although it is generally more common in the northern extent of MLRA 52. The dominant shrub on this site is silver sagebrush (*Artemisia cana*) with Wyoming big sagebrush (*Artemisia tridentata* subsp. *Wyomingensis*) occurring as a subdominant species.

### Associated sites

FX052X03X032	<b>Loamy (Lo) Dry Shrubland</b> This site is on slopes of less than 15 percent on moraines and till plains upslope from and commonly surrounding the Swale Dry Shrubland ecological site.
FX052X03X040	<b>Loamy-Steep (Lostp) Dry Shrubland</b> This site is on slopes of 15 percent or greater on hillslopes surrounding the Swale site. It typically occupies a backslope position; whereas, the Swale Dry Shrubland ecological site is found on concave slope positions where surface runoff is concentrated.
FX052X01X032	<b>Loamy (Lo) Dry Grassland</b> This site is on slopes of less than 15 percent on moraines and till plains upslope from and commonly surrounding the Swale Dry Shrubland ecological site. The upper 4 inches of soil contains greater than 35 percent clay.

### Similar sites

FX052X99X060	<b>Overflow (Ov)</b> This site differs from the Swale Dry Shrubland ecological site in that it is on flood plains rather than upland swales. It generally is on stream terraces adjacent to a losing stream reach and in some areas has a water table greater than 40 inches below the soil surface.
FX052X03X032	<b>Loamy (Lo) Dry Shrubland</b> This site differs from the Swale Dry Shrubland ecological site in that it is in higher topographical positions that do not receive additional moisture; whereas, the Swale site is in the bottoms of coulees or swales and receives additional moisture.

FX052X01X062	<b>Swale (Se) Dry Grassland</b> This site differs from the Swale Dry Shrubland ecological site in that it has slightly cooler annual temperatures and supports silver sagebrush, but not Wyoming big sagebrush.
--------------	--

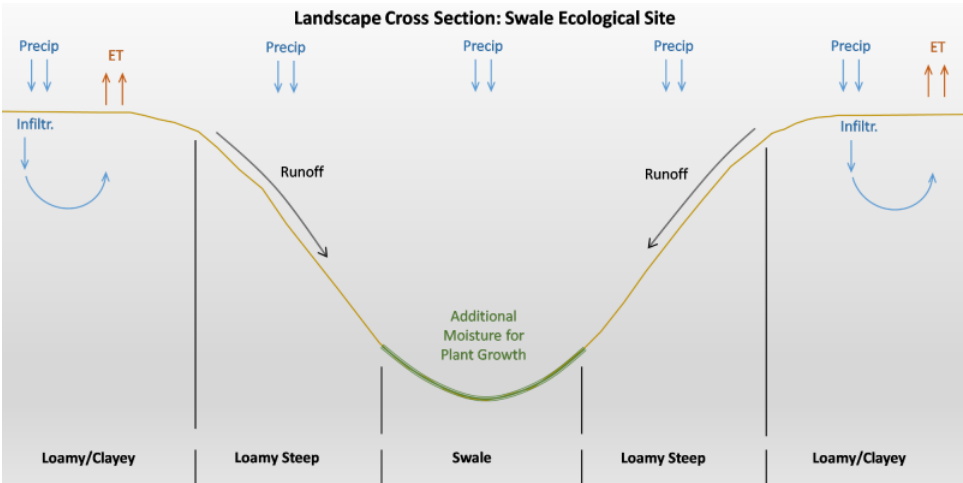


Figure 2. Figure 3. Diagram of associated sites and hydrologic patterns

Table 1. Dominant plant species

Tree	Not specified
Shrub	Not specified
Herbaceous	Not specified

### Legacy ID

R052XY730MT

### Physiographic features

Swale Dry Shrubland is a common ecological site on swale microfeatures on till plains, moraines, and outwash fans. This site is extensive across MLRA 52 but typically occurs as a minor component of most map units. It is typically in a complex with Loamy or Clayey ecological sites and is found on swale microfeatures that receive additional moisture via surface runoff from adjacent sites.

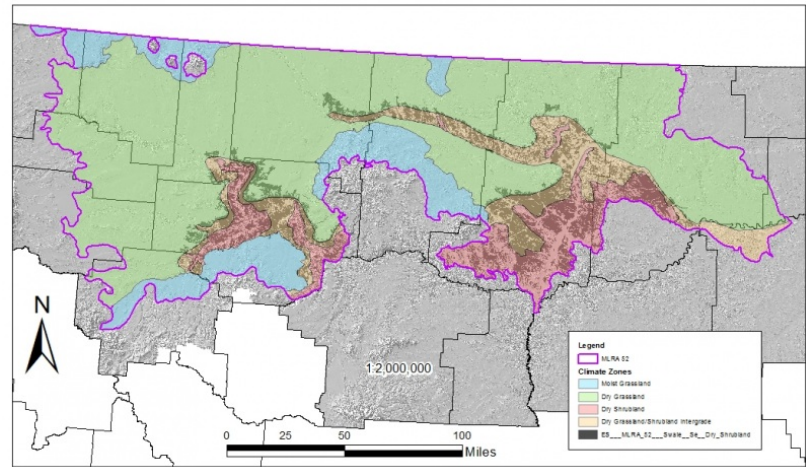


Figure 3. Figure 1. Map units containing Swale Dry Shrubland ecological site as a minor component (<10% map unit composition)

Table 2. Representative physiographic features

Landforms	(1) Till plain > Moraine > Swale (2) Till plain > Fan > Swale
Flooding frequency	None
Elevation	610–1,180 m
Slope	0–15%
Aspect	Aspect is not a significant factor

## Climatic features

The Brown Glaciated Plains is a semi-arid region with a temperate continental climate that is characterized by frigid winters and warm to hot summers (Cooper et al., 2001). The average frost-free period for this ecological site is 125 days. The majority of precipitation occurs as steady, soaking, frontal system rains in late spring to early summer. Summer rainfall comes mainly from convection thunderstorms that typically deliver scattered amounts of rain in intense bursts. These storms may be accompanied by damaging winds and large-diameter hail and result in flash flooding along low-order streams. Severe drought occurs on average in 2 out of 10 years. Annual precipitation ranges from 10 to 14 inches, and 70 to 80 percent of this occurs during the growing season (Cooper et al., 2001). Extreme climatic variations, especially droughts, have the greatest influence on species cover and production (Coupland, 1958, 1961; Biondini et al., 1998).

During the winter months, the western half of MLRA 52 commonly experiences chinook winds, which are strong west to southwest surface winds accompanied by abrupt increases in temperature. The chinook winds are strongest on the western boundary of the MLRA near the Rocky Mountain foothills and decrease eastward. In addition to producing damaging winds, prolonged chinook episodes can result in drought or vegetation kills due to a reaction of plants to a “false spring” (Oard, 1993).

**Table 3. Representative climatic features**

Frost-free period (average)	125 days
Freeze-free period (average)	145 days
Precipitation total (average)	330 mm

## Climate stations used

- (1) CONTENT 3 SSE [USC00241984], Zortman, MT
- (2) FT BENTON [USC00243113], Fort Benton, MT
- (3) FT PECK PWR PLT [USC00243176], Fort Peck, MT
- (4) LOMA 1 WNW [USC00245153], Loma, MT
- (5) MALTA 7 E [USC00245338], Malta, MT
- (6) MALTA 35 S [USC00245340], Zortman, MT

## Influencing water features

This is an upland site and the water budget is normally contained within the soil profile. During intense precipitation events, precipitation rates frequently exceed infiltration rates and this site receives additional moisture from upslope sites via surface runoff. Moisture loss through evapotranspiration exceeds precipitation for the majority of the growing season, but this site receives enough moisture from runoff to remain moist much longer than adjacent sites. Typical precipitation events deliver enough moisture to fill the soil profile, but the site is not generally considered a recharge site. When seeded to annual crops, this site may become a discharge site, especially if adjacent cropland is in a wheat/fallow rotation. In this case the Swale ecological site may be affected by saline seeps due to deep percolation from adjacent cropland.

## Soil features

The central concept for this ecological site is best represented by Ferd, Acel, Ethridge, Evanston, and Kremlin soils occurring on swale microfeatures. The estimated extent of this ecological site in MLRA 52 is 300,000 acres. The

Ferd and Acel soils are in the Haplustalfs great group and are characterized by a surface horizon that lacks enough organic matter to have a mollic epipedon and an underlying argillic horizon where clay has accumulated through weathering. The Ethridge and Evanston soils are in the Argiustolls great group and have a relatively dark mollic epipedon and an underlying argillic horizon. The Kremlin soil is in the Haplustolls great group and has a mollic epipedon but lacks an argillic horizon. The particle-size family for these soils is fine-loamy or fine, and mineralogy is either smectitic or mixed. Local alluvium or glaciofluvial deposits are the typical parent materials for these series. The soil moisture regime for all soils in this ecological site concept is ustic bordering on aridic, which means that the soils are moist in some or all parts for either 180 cumulative days or 90 consecutive days during the growing season but are dry in some or all parts for over 90 cumulative days. These soils have a frigid soil temperature regime (Soil Survey Staff, 2014).

Surface textures found in this site are most commonly loam and clay loam but can range from fine sandy loam to silty clay loam and typically contain between 20 to 35 percent clay. The underlying horizons typically contain 35 to 50 percent clay and have clay, clay loam, or silty clay loam textures. Organic matter content in the surface horizon typically ranges from 1 to 3 percent, and moist colors vary from grayish brown (10YR 5/2) to very dark grayish brown (10YR 3/2). The surface horizon of these soils does not typically react with hydrochloric acid. Depth to secondary carbonates is typically 15 inches or more below the soil surface. Calcium carbonate equivalent is typically less than 5 percent in the upper 5 inches and 10 percent or less in lower horizons. In the upper 20 inches, electrical conductivity is less than 4 and the sodium absorption ratio is less than 13. Soil pH classes are moderately acid to slightly alkaline in the surface horizon and neutral to strongly alkaline in the subsurface horizons. The soil depth class for this site is typically very deep (greater than 60 inches to bedrock). Content of coarse fragments is less than 35 percent in the upper 20 inches of soil and is typically less than 15 percent.

**Table 4. Representative soil features**

Parent material	(1) Alluvium (2) Glaciofluvial deposits
Surface texture	(1) Loam (2) Clay loam
Drainage class	Well drained
Soil depth	152–183 cm
Available water capacity (0-101.6cm)	16.26–20.32 cm
Calcium carbonate equivalent (0-12.7cm)	0–4%
Electrical conductivity (0-50.8cm)	0–3 mmhos/cm
Sodium adsorption ratio (0-50.8cm)	0–12
Soil reaction (1:1 water) (0-101.6cm)	5.6–9
Subsurface fragment volume <=3" (0-50.8cm)	0–34%
Subsurface fragment volume >3" (0-50.8cm)	0–34%

## Ecological dynamics

The information in this ecological site description, including the state-and-transition model (STM) (figure 2), was developed based on historical data, current field data, professional experience, and a review of the scientific literature. As a result, all possible scenarios or plant species may not be included. Key indicator plant species, disturbances, and ecological processes are described to inform land management decisions.

The Swale Dry Shrubland provisional ecological site in MLRA 52 consists of four states: The Reference State (1), the Invaded State (2), the Cropland State (3), and the Post-Cropland State (4). Plant communities associated with

this ecological site evolved under the combined influences of climate, grazing, and fire. Extreme climatic variability results in frequent droughts, which have the greatest influence on the relative contribution of species cover and production (Coupland, 1958, 1961; Biondini et al., 1998). Due to the dominance of cool-season graminoids, annual production is highly dependent upon mid- to late-spring precipitation (Heitschmidt and Vermeire, 2005; Anderson, 2006).

Native grazers also shaped these plant communities. Bison (*Bison bison*) were the dominant historic grazer, but pronghorn (*Antilocapra Americana*), elk (*Cervus canadensis*), and deer (*Odocoileus* spp.) were also common. Additionally, small mammals such as prairie dogs (*Cynomys* spp.) and ground squirrels (*Urocitellus* spp.) influenced this plant community (Salo et al., 2004). Grasshoppers and periodic outbreaks of Rocky Mountain locusts (*Melanoplus spretus*) also played an important role in the ecology of these communities (Lockwood, 2004).

Fire is a critical dynamic on the Loamy Steep Dry Shrubland ecological site. The historic ecosystem experienced periodic lightning-caused fires. Historically, Native Americans also set periodic fires. The majority of lightning-caused fires occurred in July and August; whereas, Native Americans typically set fires during spring and fall to correspond with the movement of bison (Higgins, 1986). It is difficult to precisely determine the fire return interval in the Dry Shrubland climate zone, but estimates range from 6 to 25 years (Bragg, 1995) to 10 to 70 years (Howard, 1999). It is believed that the frequency and intensity of fire would be less on the Loamy Steep Dry Shrubland ecological site than on adjacent sites due to the broken topography. Generally, the herbaceous vegetation is resilient to fire and the primary effects of fire are reduction of litter and short term fluctuations in production (Vermeire et al., 2011, 2014). However, studies have shown that very short fire return intervals (less than 5 years) can have a negative effect, shifting species composition toward warm-season, short-statured grasses (Shay et al., 2001; Smith and McDermid, 2014). Conversely, fire has a significant effect on Wyoming big sagebrush cover. Wyoming big sagebrush is a non-sprouting shrub and is most often killed by fire (Howard, 1999). Often, it may take 30 years or more for a stand to recover following fire (Watts and Wambolt, 1996; Wambolt et al., 2001). It is likely that fire return intervals shorter than 30 years will result in a reduction in Wyoming big sagebrush cover over the long term. Long-term fire suppression in the 20th century removed periodic fire from the ecosystem altogether. Very little is known how this has affected the Dry Shrubland ecosystem. Some studies suggest an increase in Wyoming big sagebrush cover, presumably due to fire suppression (Bloom-Cornelius, 2011). Increased decadence in Wyoming big sagebrush may also occur (Howard, 1999), but these results are inconclusive.

Lack of periodic fires can also result in an increase in litter accumulation and, in some cases, provide ideal conditions for seed germination and seedling establishment of non-native annual brome species, such as field brome or Japanese brome (*Bromus arvensis*) (Whisenant, 1990). These species have become naturalized in relatively undisturbed grasslands (Ogle et al., 2003; Harms, 2007) and can be present in any state within the scope of this ecological site. They typically do not have a significant ecological impact; however, their presence can reduce the production of cool-season perennial grasses in some cases (Haferkamp et al., 1997). Their abundance varies depending on precipitation and germination conditions. The fire-recovery cycle is a critical element in managing the Dry Shrubland ecosystem. Further study is needed in this area to determine a balanced and sustainable fire cycle.

Improper grazing of this site can result in a reduction in the cover of the mid-statured bunchgrasses (Smoliak et al., 1972; Smoliak, 1974). Improper grazing practices include any practices that do not allow sufficient opportunity for plants to physiologically recover from a grazing event or multiple grazing events within a given year and/or that do not provide adequate cover to prevent soil erosion over time. These practices may include, but are not limited to, overstocking, continuous grazing, and/or inadequate seasonal rotation moves over multiple years. Western wheatgrass appears to be relatively resistant to grazing on this site, presumably due to the increased moisture availability and the rhizomatous nature of the grass. Periods of drought can also reduce mid-statured cool-season grasses (Coupland, 1958, 1961). The warm-season species blue grama does not appear to be prevalent on this site; however, needleleaf sedge (*Carex duriuscula*) can be common and appears to increase under grazing pressure (Adams et al., 2013). Further degradation of the site due to improper grazing can result in reduced vigor of rhizomatous wheatgrasses and an increase in unpalatable forbs, such as white sagebrush, more commonly known as cudweed sagewort (*Artemisia ludoviciana*). The cover of mid-statured bunchgrasses is severely reduced or absent. This site is quite resilient and has not been documented to cross a threshold into an altered state; however, in this condition the site is highly susceptible to invasion by non-native species. Introduced bluegrasses (*Poa* spp.) are the most common invasive species.

Due to the productivity of the soils, this ecological site has the potential to be productive cropland. However,

conversion to cropland depends on the steepness of the site. Side slopes greater than 8 percent are generally inaccessible to farm equipment. Regardless, many acres have been cultivated and planted to cereal grain crops, such as winter wheat, spring wheat, and barley. Due to the concentration of runoff, this site is very susceptible to erosion when farmed and soil loss is common. Unfarmed swales are also susceptible to deposition when surrounding areas are farmed, and deposition impairs the ecological function of the site. When taken out of production, this site is most commonly seeded back to perennial grass. Introduced species such as pubescent wheatgrass are most common, but native species may also be seeded. Reseeding projects commonly involve extensive earthmoving and soil disturbance, therefore the site is unlikely to return to the Reference State even if seeded to native species. Sites seeded with non-native species may persist as this cover type indefinitely. Sites left to undergo natural plant succession after cultivation will most likely continue to erode and, as a result, have drastically altered soil properties, hydrology, and vegetation. Such a site may stabilize over time and support perennial vegetation, but is it likely that non-native or invasive species will be common. Under ideal circumstances, it may take over 75 years for soil organic matter to return to its pre-disturbed state (Dormaar et al., 1990); it is likely to take much longer in a swale if soil erosion is significant.

The state-and-transition model (STM) diagram (Figure 2) suggests possible pathways that plant communities on this site may follow as a result of a given set of ecological processes and management. The site may also support states not displayed in the STM diagram. Landowners and land managers should seek guidance from local professionals before prescribing a particular management or treatment scenario. Plant community responses vary across this MLRA due to variability in weather, soils, and aspect. The reference community phase may not necessarily be the management goal. The lists of plant species and species composition values are provisional and are not intended to cover the full range of conditions, species, and responses for the site. Species composition by dry weight is provided when available and is considered provisional based on the sources identified in the narratives associated with each community phase.

#### State 1: Reference State

The Reference State (1) contains four community phases. This state evolved under the combined influences of climate, grazing, and fire with climatic variation having the greatest influence on cover and production. In general, this state was resilient to grazing, although heavy grazing could influence species composition in localized areas. Vegetation is characterized by mid-statured cool-season bunchgrasses, mid-statured cool-season rhizomatous grasses, silver sagebrush, and Wyoming big sagebrush. Dense spike-moss, also known as dense clubmoss (*Selaginella densa*), is commonly present and may constitute significant ground cover; however, it is absent in some areas. Its dynamics are not well understood, and its abundance appears to vary greatly from site to site without discernable reason.

##### Phase 1.1: Green Needlegrass/Mixed Shrub Community Phase

The Green Needlegrass/Mixed Shrub Community Phase (1.1) is dominated by mid-statured cool-season bunchgrasses. Green needlegrass is the primary species although needle and thread is commonly present at low cover. The mid-statured cool-season rhizomatous grasses are subdominant in this phase. Both western and thickspike wheatgrass may be present, with thickspike becoming more common in the northern extent of this site. Short-statured graminoids, such as blue grama and needleleaf sedge, are not abundant in this phase but are generally present at low cover. Common forbs are American vetch (*Vicia Americana*), large Indian breadroot (*Pediomelum esculentum*), and common yarrow (*Achillea millefolium*). Silver sagebrush is the dominant shrub with Wyoming big sagebrush occurring as a subdominant component. Combined sagebrush cover typically ranges from 5 to 15 percent of the canopy cover. Snowberry (*Symphoricarpos* spp.) is sometimes present at low cover. The approximate species composition of the reference plant community is as follows:

##### Percent composition by weight

Green Needlegrass 35%  
Rhizomatous Wheatgrasses 25%  
Needle and Thread 5%  
Other Native Grasses 5%  
Perennial Forbs 15%  
Silver Sagebrush 10%  
Wyoming Big Sagebrush 5%  
Other Shrubs/Subshrubs Trace

Estimated Total Annual Production (lbs./ac)\*



Low - 900

Representative Value - 1250

High - 1600

\*Estimated based on current data – subject to revision

#### Phase 1.2: Wheatgrass/Mixed Shrub Community Phase

The Wheatgrass/Mixed Shrub Community Phase (1.2) occurs when site conditions decline due to long-term drought or improper grazing, and a fire has not occurred on the site for at least 30 years. The species structure has shifted from dominantly bunchgrasses to dominantly rhizomatous grasses. Mid-statured bunchgrasses, particularly green needlegrass have been eliminated, or nearly so. The plant community is dominated by rhizomatous wheatgrasses, primarily western wheatgrass, but vigor is reduced and unpalatable forbs are common. Cover of blue grama increases, but information suggests that blue grama tends not to dominate this site as it does other sites. The decreased vigor of native species may make this phase more susceptible to invasion by non-native species, such as Kentucky bluegrass (*Poa pratensis*) and Canada bluegrass (*Poa compressa*). Shrub cover is similar to Green Needlegrass/Mixed Shrub Community Phase (1.1).

#### Phase 1.3: Green Needlegrass/Silver Sagebrush Community Phase

The Green Needlegrass/Silver Sagebrush Community Phase (1.3) occurs when the plant community is burned either by wildfire, or prescribed fire, and may persist for as long as 30 years after burning. The herbaceous plant community is similar to the Green Needlegrass/Mixed Shrub Community Phase (1.1). It is dominated by mid-statured cool-season bunchgrasses, primarily green needlegrass. The mid-statured cool-season rhizomatous grasses are subdominant in this phase. Short-statured graminoids, such as blue grama and needleleaf sedge, are not abundant in this phase but are generally present at low cover. Silver sagebrush is the dominant shrub and Wyoming big sagebrush is rare or absent. Although Wyoming big sagebrush is killed by fire, silver sagebrush recovers quickly due to its root sprouting ability. Silver sagebrush cover typically recovers to pre-burn levels in 4 to 6 years (Howard, 2001). Snowberry (*Symphoricarpos* spp.) is sometimes present at low cover.

#### Phase 1.4: Wheatgrass/Silver Sagebrush Community Phase

The Wheatgrass/Silver Sagebrush Community Phase (1.4) occurs when site conditions decline due to long-term drought or improper grazing, and a fire has occurred on the site less than 30 years prior. The species structure has shifted from dominantly bunchgrasses to dominantly rhizomatous grasses. Mid-statured bunchgrasses, particularly green needlegrass have been eliminated or nearly so. The plant community is dominated by rhizomatous wheatgrasses, primarily western wheatgrass, but vigor is reduced and unpalatable forbs are common. Cover of blue grama increases, but information suggests that blue grama tends not to dominate this site as it does other sites. The decreased vigor of native species may make this phase more susceptible to invasion by non-native species, such as Kentucky bluegrass (*Poa pratensis*) and Canada bluegrass (*Poa compressa*). Shrub cover is similar to Green Needlegrass/Silver Sagebrush Community Phase (1.3).

#### Community Phase Pathway 1.1a

Drought, improper grazing management, or a combination of these factors can shift the Green Needlegrass/Mixed Shrub Community Phase (1.1) to the Wheatgrass/Mixed Shrub Community Phase (1.2). These factors favor a decrease in mid-statured cool-season bunchgrasses (Coupland, 1961).

#### Community Phase Pathway 1.1b

Fire will transition the Green Needlegrass/Mixed Shrub Community Phase (1.1) to the Green Needlegrass/Silver Sagebrush Community Phase (1.3). Wyoming big sagebrush is killed and silver sagebrush will dominate the shrub cover.

#### Community Phase Pathway 1.2a

Normal or above-normal spring precipitation and proper grazing management transitions the Wheatgrass/Mixed Shrub Community Phase (1.2) to the Needlegrass/Mixed Shrub Community Phase (1.1).

#### Community Phase Pathway 1.2b

Fire will transition the Wheatgrass/Mixed Shrub Phase (1.2) to the Wheatgrass/Silver Sagebrush Phase (1.4). Wyoming big sagebrush is killed and silver sagebrush will dominate the shrub cover.

#### Community Phase Pathway 1.3a

Drought, improper grazing management, or a combination of these factors can shift the Green Needlegrass/Silver

Sagebrush Community Phase (1.3) to the Wheatgrass/Silver Sagebrush Community Phase (1.4). These factors favor a decrease in mid-statured cool-season bunchgrasses (Coupland, 1961).

#### Community Phase Pathway 1.3b

Thirty years or more of natural vegetative regrowth will transition the Green Needlegrass/Silver Sagebrush Community Phase (1.3) to the Green Needlegrass/Mixed Shrub Community Phase (1.1). Thirty years or more without fire permits Wyoming big sagebrush recolonize the site.

#### Transition T1A

The Reference State (1) transitions to the Invaded State (2) when aggressive perennial grasses or noxious weeds invade. Kentucky bluegrass is a widespread invasive species in the northern Great Plains (Toledo et al., 2014). Decreased vigor of native species may be one factor that increases susceptibility to invasion. Studies have also shown that exclusion of grazing and fire favors invasive bluegrass species (DeKeyser et al., 2013).

#### Transition T1B

Tillage or application of herbicide followed by seeding of cultivated crops, such as winter wheat, spring wheat, and barley, transitions the Reference State (1) to the Cropland State (3).

#### State 2: Invaded State

The Invaded State (2) occurs when invasive plant species invade adjacent native grassland communities. Introduced bluegrasses, such as Kentucky and Canada bluegrass, are the most common concerns. Kentucky bluegrass, in particular, is widespread throughout the Northern Great Plains (Toledo et al., 2014). It is very competitive and displaces native species by forming dense root mats, altering nitrogen cycling, and creating allelopathic effects on germination (DeKeyser et al., 2013). Plant communities dominated by Kentucky bluegrass have significantly less cover of native grass and forb species (Toledo et al., 2014; DeKeyser et al., 2009). Kentucky bluegrass can persist in either grazed or non-grazed sites and can substantially increase under long-term grazing exclusion (DeKeyser et al., 2009; Grant et al., 2009). Effects on soil quality are still unknown at this time, but possible concerns are alteration of surface hydrology and modification of soil surface structure (Toledo et al., 2014). Reduced plant species diversity, simplified structural complexity, and altered biologic processes result in a state that is substantially departed from the Reference State (1).

Noxious weeds are not widespread in MLRA 52, but leafy spurge and Canada thistle have both been documented on this site. These species are very aggressive perennials. They typically displace native species and dominate ecological function when they invade a site. In some cases, these species can be suppressed through intensive management (herbicide application, biological control, or intensive grazing management). Control efforts are unlikely to eliminate noxious weeds, but their density can be sufficiently suppressed so that species composition and structural complexity are similar to that of the Reference State (1). However, cessation of control methods will most likely result in recolonization of the site by the noxious species.

#### Transition T2A

Tillage or application of herbicide followed by seeding of cultivated crops, such as winter wheat, spring wheat, and barley, transitions the Invaded State (2) to the Cropland State (3).

#### State 3: Cropland State

The Cropland State (3) occurs when land is put into cultivation. Major crops in MLRA 52 include winter wheat, spring wheat, and barley. The Swale Dry Shrubland ecological site is highly susceptible to erosion due to the lack of perennial species in this state. Wheat/fallow rotations are also very inefficient at removing moisture from the soil in comparison to native vegetation. In some cases, the Swale Dry Shrubland ecological site may receive ground-water discharge from surrounding sites. In areas where soils or underlying parent materials have a high amount of soluble salts, a saline seep may develop.

#### Transition T3A

The transition from the Cropland State (3) to the Post-Cropland State (4) occurs with the cessation of cultivation. The site may also be seeded to perennial forage species, such as pubescent wheatgrass and alfalfa, or a mix of native species. This transition frequently involves extensive earthmoving, grading, and shaping of the site.

#### State 4: Post-Cropland State

The Post-Cropland State (4) occurs when cultivated cropland is abandoned and allowed to either re-vegetate

naturally or is seeded back to perennial species for grazing or wildlife use. This state can transition back to the Cropland State (3) if the site is put back into cultivation.

#### Phase 4.1: Abandoned Cropland Community Phase

The Abandoned Cropland Community Phase (4.1) occurs when cropland is abandoned. The absence of active management, makes the site susceptible to erosion that is likely to result in downcutting and gullyng. Eventually, the site will probably stabilize and re-vegetate to a perennial grassland community, but not before a significant amount of soil has been lost. Due to significant changes in soil structure, organic matter content, and, possibly, hydrology, the site is unlikely to return to the Reference State (1). Invasion of the site by exotic species, such as Kentucky bluegrass, and annual bromes will depend upon the site's proximity to a seed source.

#### Phase 4.2: Perennial Grass Community Phase

When the site is seeded to perennial forage species, particularly introduced perennial grasses, this community phase can persist for several decades. Smooth brome (*Bromus inermis*), in particular, is very aggressive. It frequently forms a monoculture and can invade adjacent sites if conditions are favorable. Typically, extensive earthmoving is employed to grade and shape the site prior to seeding. In most cases, the site is seeded to introduced rhizomatous grasses, such as pubescent wheatgrass, to control erosion. A mixture of native species may also be seeded to provide species composition and structural complexity similar to that of the Reference State (1). However, soil properties have been substantially altered and are unlikely to return to pre-cultivation conditions within a reasonable timeframe. After reseeding, the surrounding area commonly remains in cropland and the Swale Dry Shrubland ecological site is managed as a grassed waterway. Under these conditions, the site is subject to deposition from surrounding slopes and requires continual management to prevent sedimentation.

#### Transition 4A

The Post-Cropland State (4) transitions back to the Cropland State (3) when the site is converted to cropland.

### **State and transition model**

## Swale Dry Shrubland R052XY730MT

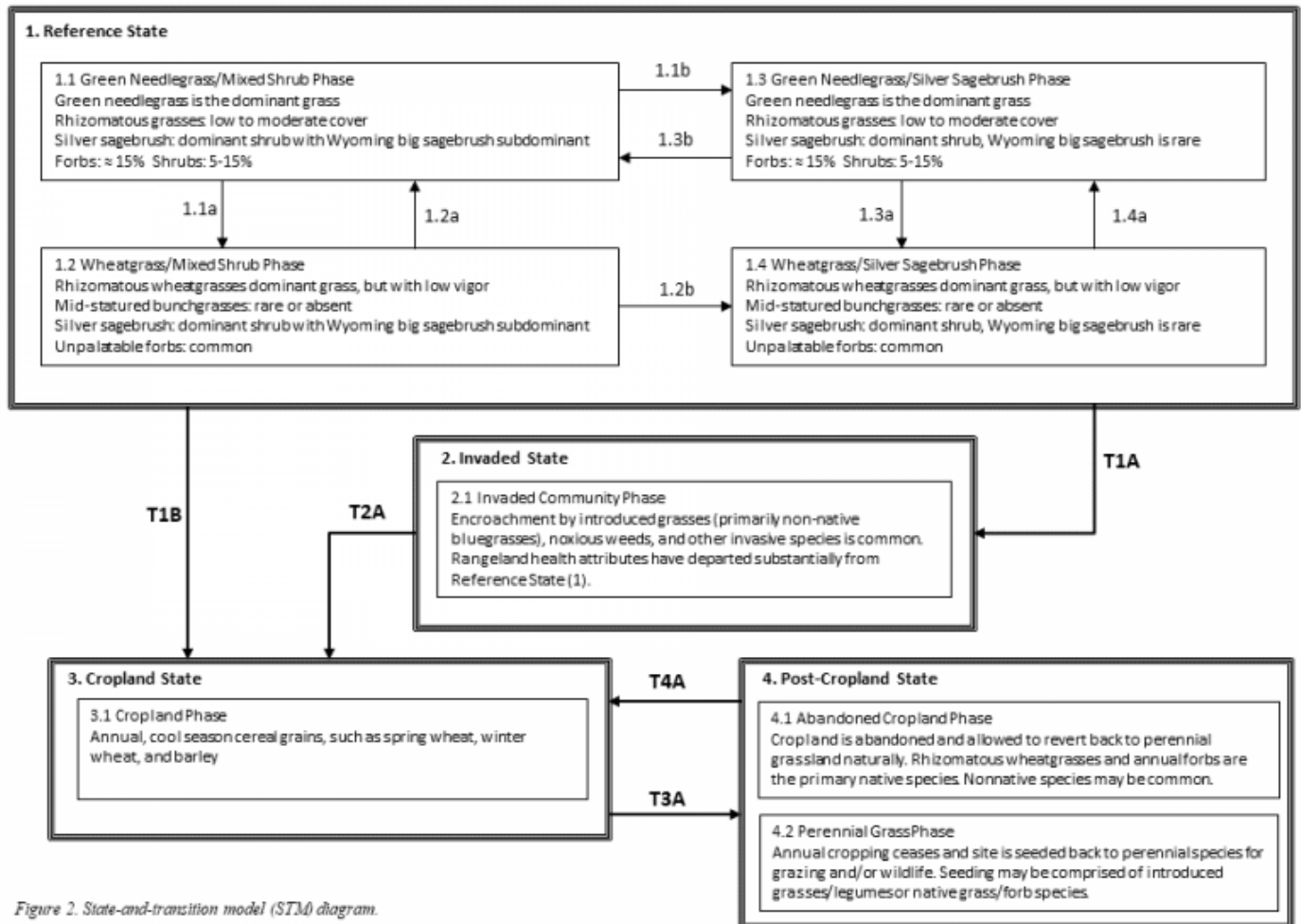


Figure 2. State-and-transition model (STM) diagram.

## Swale Dry Shrubland R052XY730MT

### Legend

- 1.1a - drought, improper grazing management
- 1.1b - fire
- 1.2a - normal or above average precipitation, proper grazing management
- 1.2b - fire
- 1.3a - drought, improper grazing management
- 1.3b - approximately 30 years post-fire regrowth
- 1.4a - normal or above average precipitation, proper grazing management
- T1A - introduction of non-native invasive species (primarily bluegrass species)
- T1B, T2A, T4A - tillage or herbicide application and seeding of annual crops
- T3A - cessation of annual cropping (frequently in conjunction with earthmoving)

Figure 2 (continued).

## Inventory data references

Data for this provisional ecological site was obtained from one low-intensity plot. Two plots of low- to medium-intensity from the Swale Dry Grassland ecological site were also referenced. These plots, in combination with professional experience and a review of the scientific literature, were used to approximate the reference plant community. Information for other states and community phases was obtained from a review of the scientific literature and professional experience. All community phases are considered provisional based on these plots and

the sources identified in this ecological site description.

## Other references

- Adams, B.W., et al. 2013. Rangeland plant communities for the dry mixedgrass natural subregion of Alberta. Second approximation. Rangeland Management Branch, Policy Division, Alberta Environment and Sustainable Resource Development, Lethbridge, Pub. No. T/040.
- Anderson, R.C. 2006. Evolution and origin of the central grassland of North America: Climate, fire, and mammalian grazers. *Journal of the Torrey Botanical Society* 133:626-647.
- Baskin, J.M., and C.C. Baskin. 1981. Ecology of germination and flowering in the weedy winter annual grass *Bromus japonicus*. *Journal of Range Management* 34:369-372.
- Biondini, M.E., and L. Manske. 1996. Grazing frequency and ecosystem processes in a northern mixed prairie, USA. *Ecological Applications* 6:239-256.
- Biondini, M.E., B.D. Patton, and P.E. Nyren. 1998. Grazing intensity and ecosystem processes in a northern mixed-grass prairie, USA. *Ecological Applications* 8:469-479.
- Bloom-Cornelius, I.V. 2011. Vegetation response to fire and domestic and native ungulate herbivory in a Wyoming big sagebrush ecosystem. M.S. thesis, Oklahoma State University. Stillwater, OK.
- Bragg, T.B. 1995. The physical environment of the Great Plains grasslands. In: A. Joern and K.H. Keeler (eds.) *The Changing Prairie*, Oxford University Press, Oxford, pp. 49–81.
- Branson, D.H., and G.A. Sword. 2010. An experimental analysis of grasshopper community responses to fire and livestock grazing in a northern mixed-grass prairie. *Environmental Entomology* 39:1441-1446.
- Bylo, L.N., N. Koper, and K.A. Molloy. 2014. Grazing intensity influences ground squirrel and American badger habitat use in mixed-grass prairies. *Rangeland Ecology and Management* 67:247-254.
- Christian, J.M., and S.D. Wilson. 1999. Long-term ecosystem impacts of an introduced grass in the Northern Great Plains. *Ecology* 80:2397-2407.
- Clarke, S.E., E.W. Tisdale, and N.A. Skoglund. 1947. The effects of climate and grazing practices on short-grass prairie vegetation in southern Alberta and southwestern Saskatchewan. Canadian Department of Agriculture Technical Bulletin No. 46.
- Cleland, D.T., et al. 1997. National hierarchical framework of ecological units. In: M.S. Boyce and A. Haney (eds.) *Ecosystem Management Applications for Sustainable Forest and Wildlife Resources*, Yale University Press, New Haven, CT.
- Cooper, S.V., C. Jean, and P. Hendricks. 2001. Biological survey of a prairie landscape in Montana's glaciated plains. Report to the Bureau of Land Management. Montana Natural Heritage Program, Helena, MT.
- Cooper, S.V., and W.M. Jones. 2003. Site descriptions of high-quality wetlands derived from existing literature sources. Report to the Montana Department of Environmental Quality. Montana Natural Heritage Program, Helena, MT.
- Coupland, R.T. 1950. Ecology of the mixed prairie of Canada. *Ecological Monographs* 20:271-315.
- Coupland, R.T. 1958. The effects of fluctuations in weather upon the grasslands of the Great Plains. *Botanical Review* 24:273-317.
- Coupland, R.T. 1961. A reconsideration of grassland classification in the Northern Great Plains of North America. *Journal of Ecology* 49:135-167.

- Coupland, R.T., and R.E. Johnson. 1965. Rooting characteristics of native grassland species in Saskatchewan. *Journal of Ecology* 53:475-507.
- Cowardin, L.M., V. Carter, F.C. Golet, and E.T. LaRoe. 1979. Classification of wetlands and deepwater habitats of the United States. US Fish and Wildlife Service FWS/OBS, 79(31), 131.
- Crowe, E., and G. Kudray. 2003. Wetland Assessment of the Whitewater Watershed. Report to U.S. Bureau of Land Management, Malta Field Office. Montana Natural Heritage Program, Helena, MT.
- Davis, S.K., R.J. Fisher, S.L. Skinner, T.L. Shaffer, and R.M. Brigham. 2013. Songbird abundance in native and planted grassland varies with type and amount of grassland in the surrounding landscape. *Journal of Wildlife Management* 77:908-919.
- DeKeyser, E.S., M. Meehan, G. Clambey, and K. Krabbenhoft. 2013. Cool season invasive grasses in northern Great Plains natural areas. *Natural Areas Journal* 33:81-90.
- DeKeyser, S., G. Clambey, K. Krabbenhoft, and J. Ostendorf. 2009. Are changes in species composition on central North Dakota rangelands due to non-use management? *Rangelands* 31:16-19.
- DeLuca, T.H., and P. Lesica. 1996. Long-term harmful effects of crested wheatgrass on Great Plains grassland ecosystems. *Journal of Soil and Water Conservation* 51:408-409.
- Derner, J.D., and R.H. Hart. 2007. Grazing-induced modifications to peak standing crop in northern mixed-grass prairie. *Rangeland Ecology and Management* 60:270-276.
- Derner, J.D., and A.J. Whitman. 2009. Plant interspaces resulting from contrasting grazing management in northern mixed-grass prairie: Implications for ecosystem function. *Rangeland Ecology and Management* 62:83-88.
- Derner, J.D., W.K. Lauenroth, P. Stapp, and D.J. Augustine. 2009. Livestock as ecosystem engineers for grassland bird habitat in the western Great Plains of North America. *Rangeland Ecology and Management* 62:111-118.
- Dix, R.L. 1960. The effects of burning on the mulch structure and species composition of grasslands in western North Dakota. *Ecology* 41:49-56.
- Dormaar, J.F., and S. Smoliak. 1985. Recovery of vegetative cover and soil organic matter during revegetation of abandoned farmland in a semiarid climate. *Journal of Range Management* 38:487-491.
- Dormaar, J.F., and W.D. Willms. 1990. Effect of grazing and cultivation on some chemical properties of soils in the mixed prairie. *Journal of Range Management* 43:456-460.
- Dormaar, J.F., B.W. Adams, and W.D. Willms. 1994. Effect of grazing and abandoned cultivation on a *Stipa-Bouteloua* community. *Journal of Range Management* 47:28-32.
- Dormaar, J.F., M.A. Naeth, W.D. Willms, and D.S. Chanasyk. 1995. Effect of native prairie, crested wheatgrass (*Agropyron cristatum*) and Russian wildrye (*Elymus junceus*) on soil chemical properties. *Journal of Range Management* 48:258-263.
- Fansler, V.A., and J.M. Mangold. 2010. Restoring native plants to crested wheatgrass stands. *Restoration Ecology* 19:16-23.
- Federal Geographic Data Committee. 2008. The National Vegetation Classification Standard, Version 2. FGDC Vegetation Subcommittee. FGDC-STD-005-2008 (Version 2). pp. 126.
- Fullerton, D.S., and R.B. Colton. 1986. Stratigraphy and correlation of the glacial deposits on the Montana Plains. U.S. Geological Survey.
- Fullerton, D.S., R.B. Colton, C.A. Bush, and A.W. Straub. 2004. Map showing spatial and temporal relations of mountain and continental glaciations on the northern plains, primarily in northern Montana and northwestern North

Dakota. U.S. Geologic Survey pamphlet accompanying Scientific Investigations Map 2843.

Fullerton, D.S., R.B. Colton, and C.A. Bush. 2013. Quaternary geologic map of the Shelby 1° x 2° quadrangle, Montana: U.S. Geological Survey Open-File Report 2012–1170, scale 1:250,000.

Galatowitsch, S.M., and A.G. Van der Valk. 1996. The vegetation of restored and natural prairie wetlands. *Ecological Applications*. 6:1 pp.102-112.

Gilbert, M.C., P.M. Whited, E.J. Clairain Jr., and R.D. Smith. 2006. A regional guidebook for applying the hydrogeomorphic approach to assessing wetland functions of prairie potholes. U.S. Army Corps of Engineers Final Report, Washington, DC.

Grant, T.A., B. Flanders-Wanner, T.L. Shaffer, R.K. Murphy, and G.A. Knutsen. 2009. An emerging crisis across northern prairie refuges: Prevalence of invasive plants and a plan for adaptive management. *Ecological Restoration* 27:58-65.

Haferkamp, M.R., R.K. Heitschmidt, and M.G. Karl. 1997. Influence of Japanese brome on western wheatgrass yield. *Journal of Range Management* 50:44-50.

Hansen, P.L., et al. 1995. Classification and management of Montana's riparian and wetland sites. University of Montana, Montana Forest and Conservation Experiment Station, Miscellaneous Publication No. 54.

Harmoney, K.R. 2007. Grazing and burning Japanese brome (*Bromus japonicus*) on mixed grass rangelands. *Rangeland Ecology and Management* 60:479-486.

Hart, M., S.S. Waller, S.R. Lowry, and R.N. Gates. 1985. Disking and seeding effects on sod bound mixed prairie. *Journal of Range Management* 38:121-125.

Heidel, B., S.V. Cooper, and C. Jean. 2000. Plant species of special concern and plant associations of Sheridan County, Montana. Report to U.S. Fish and Wildlife Service. Montana Natural Heritage Program, Helena, MT.

Heidinga, L., and S.D. Wilson. 2002. The impact of an invading alien grass (*Agropyron cristatum*) on species turnover in native prairie. *Diversity and Distributions* 8:249-258.

Heitschmidt, R.K., and L.T. Vermeire. 2005. An ecological and economic risk avoidance drought management decision support system. In: J.A. Milne (ed.) *Pastoral Systems in Marginal Environments*, XXth International Grasslands Congress, July 2005, p. 178.

Henderson, A.E., and S.K. Davis. 2014. Rangeland health assessment: A useful tool for linking range management and grassland bird conservation? *Rangeland Ecology and Management* 67:88-98.

Henderson, D.C., and M.A. Naeth. 2005. Multi-scale impacts of crested wheatgrass invasion in mixed-grass prairie. *Biological Invasions* 7:639-650.

Herrick, J.E., J.W. Van Zee, K.M. Havstad, L.M. Burkett, and W.G. Whitford. 2009. Monitoring manual for grassland, shrubland and savanna ecosystems. U.S. Department of Agriculture, Agricultural Research Service, Jornada Experimental Range, Las Cruces, NM.

Higgins, K.F. 1986. Interpretation and compendium of historical fire accounts in the Northern Great Plains. U.S. Fish and Wildlife Service Resource Publication 161.

Holechek, J.L. 1981. Crested wheatgrass. *Rangelands* 3:151-153.

Howard, J.L. 1999. *Artemisia tridentata* subsp. *wyomingensis*. In: Fire Effects Information System, U.S. Department of Agriculture, Forest Service <http://www.fs.fed.us/database/feis/plants/shrub/arttriw/all.html> (accessed 8/11/2016).

Howard, J.L. 2002. *Artemisia cana*. In: Fire Effects Information System, U.S. Department of Agriculture, Forest Service <http://www.fs.fed.us/database/feis/plants/shrub/arttriw/all.html> (accessed 10/20/2016).

- Joern, A. 2005. Disturbance by fire frequency and bison grazing modulate grasshopper assemblages in tallgrass prairie. *Ecology* 86:861-873.
- Jones, W.M. 2004. Using vegetation to assess wetland condition: a multimetric approach for temporarily and seasonally flooded depressional wetlands and herbaceous-dominated intermittent and ephemeral riverine wetlands in the northwestern glaciated plains ecoregion, Montana. Report to the Montana Department of Environmental Quality and the U.S. Environmental Protection Agency. Montana Natural Heritage Program, Helena, MT.
- Knopf, F.L. 1996. Prairie legacies—birds. In: F.B. Samson and F.L. Knopf (eds.) *Prairie Conservation: Preserving North America's Most Endangered Ecosystem*, Island Press, Washington, DC, pp. 135-148.
- Knopf, F.L., and F.B. Samson. 1997. Conservation of grassland vertebrates. In: F.B. Samson and F.L. Knopf (eds.) *Ecology and Conservation of Great Plains Vertebrates: Ecological Studies 125*, Springer-Verlag, New York, NY, pp. 273-289.
- Krzic, M., K. Broersma, D.J. Thompson, and A.A. Bomke. 2000. Soil properties and species diversity of grazed crested wheatgrass and native rangelands. *Journal of Range Management* 53:353-358.
- Lacey, J., R. Carlstrom, and K. Williams. 1995. Chiseling rangeland in Montana. *Rangelands* 17:164-166.
- Lauenroth, W.K., O.E. Sala, D.P. Coffin, and T.B. Kirchner. 1994. The importance of soil water in recruitment of *Bouteloua gracilis* in the shortgrass steppe. *Ecological Applications* 4:741-749.
- Laycock, W.A. 1988. History of grassland plowing and grass planting on the Great Plains. In: J.E. Mitchell (ed.) *Impacts of the Conservation Reserve Program in the Great Plains—Symposium Proceedings, September 16-18, 1987*. USDA Forest Service, Rocky Mountain Forest and Range Experiment Station, General Technical Report RM-158.
- Laycock, W.A. 1991. Stable states and thresholds of range condition on North American rangelands. *Journal of Range Management* 44:427-433.
- Lesica, P., and P. Husby. 2006. *Field Guide to Montana's Wetland Vascular Plants*. Montana Wetlands Trust. Helena, MT.
- Lockwood, J.A. 2004. *Locust: The devastating rise and mysterious disappearance of the insect that shaped the American frontier*. Basic Books, New York, NY.
- Looman, J., and D.H. Heinrichs. 1973. Stability of crested wheatgrass pastures under long-term pasture use. *Canadian Journal of Plant Science* 53:501-506.
- Madden, E.M., R.K. Murphy, A.J. Hansen, and L. Murray. 2000. Models for guiding management of prairie bird habitat in northwestern North Dakota. *American Midland Naturalist* 144:377-392.
- McNab, W.H., et al. 2007. Description of ecological subregions: Sections of the conterminous United States [CD-ROM]. USDA Forest Service, General Technical Report WO-76B.
- McIntyre, C., K. Newlon, L. Vance, and M. Burns. 2011. Milk, Marias, and St. Mary monitoring: developing a long-term rotating basin wetland assessment and monitoring strategy for Montana. Report to the United States Environmental Protection Agency. Montana Natural Heritage Program, Helena, MT.
- Miller, J.J., and J.A. Brierley. 2011. Solonchic soils of Canada: Genesis, distribution, and classification. *Canadian Journal of Soil Science* 91:889-902.
- Montana State College. 1949. *Similar vegetative rangeland types in Montana*. Montana State College, Agricultural Experiment Station.
- Mushet, D.M., N.H. Euliss, Jr., and C.A. Stockwell. 2012. A conceptual model to facilitate amphibian conservation in



the Northern Great Plains. *Great Plains Research* 22:45-58.

Nesser, J.A., G.L. Ford, C.L. Maynard, and D.S. Page-Dumroese. 1997. Ecological units of the Northern Region: Subsections. USDA Forest Service, Intermountain Research Station, General Technical Report INT-GTR-369.

Oard, M.J. 1993. A method of predicting chinook winds east of the Montana Rockies. *Weather and Forecasting* 8:166-180.

Ogle, S.M., W.A. Reiners, and K.G. Gerow. 2003. Impacts of exotic annual brome grasses (*Bromus* spp.) on ecosystem properties of the northern mixed grass prairie. *American Midland Naturalist* 149:46-58.

Roath, L.R. 1988. Implications of land conversions and management for the future. In: J.E. Mitchell (ed.) *Impacts of the Conservation Reserve Program in the Great Plains—Symposium Proceedings, September 16-18, 1987*. USDA Forest Service, Rocky Mountain Forest and Range Experiment Station, General Technical Report RM-158.

Rogler, G.A., and R.J. Lorenz. 1983. Crested wheatgrass: Early history in the United States. *Journal of Range Management* 36:91-93.

Romo, J.T. 2011. Clubmoss, precipitation, and microsite effects on emergence of graminoid and forb seedlings in the semiarid northern mixed prairie of North America. *Journal of Arid Environments* 75:98-105.

Rowe, J.S. 1969. Lightning fires in Saskatchewan grassland. *Canadian Field Naturalist* 83:317-327.

Salo, E.D., et al. 2004. Grazing intensity effects on vegetation, livestock and non-game birds in North Dakota mixed-grass prairie. *Proceedings of the 19th North American Prairie Conference, Madison, WI*.

Samuel, M.J., and R.H. Hart. 1994. Sixty-one years of secondary succession on rangelands of the Wyoming High Plains. *Journal of Range Management* 47:184-191.

Semlitsch, R.D. 2000. Principles for management of aquatic-breeding amphibians. *Journal of Wildlife Management* 64:615-631.

Shay, J., D. Kunec, and B. Dyck. 2001. Short-term effects of fire frequency on vegetation composition and biomass in mixed prairie in south-western Manitoba. *Plant Ecology* 155:157-167.

Smith, B., and G.J. McDermid. 2014. Examination of fire-related succession within the dry mixed-grass subregion of Alberta with the use of MODIS and Landsat. *Rangeland Ecology and Management* 67:307-317.

Smith, R.E. 2013. Conserving Montana's sagebrush highway: Long distance migration in sage-grouse. M.S. thesis, University of Montana, Missoula, MT.

Smoliak, S. 1974. Range vegetation and sheep production at three stocking rates on *Stipa-Bouteloua* prairie. *Journal of Range Management* 27:23-26.

Smoliak, S., and J.F. Dormaar. 1985. Productivity of Russian wildrye and crested wheatgrass and their effect on prairie soils. *Journal of Range Management* 38:403-405.

Smoliak, S., J.F. Dormaar, and A. Johnston. 1972. Long-term grazing effects on *Stipa-Bouteloua* prairie soils. *Journal of Range Management* 25:246-250.

Soil Survey Staff. 2014. Keys to soil taxonomy, 12th edition. USDA Natural Resources Conservation Service.

Soller, D.R. 2001. Map showing the thickness and character of Quaternary sediments in the glaciated United States east of the Rocky Mountains. U.S. Geological Survey Miscellaneous Investigations Series I-1970-E, scale 1:3,500,000.

Stephens, S.E., J.J. Rotella, M.S. Lindberg, M.L. Taper, and J.K. Ringelman. 2005. Duck nest survival in the Missouri Coteau of North Dakota: Landscape effects at multiple spatial scales. *Ecological Applications* 15:2137-

- Stewart, R.E., and H.A. Kantrud. 1971. Classification of natural ponds and lakes in the glaciated prairie region. No. 92. US Fish and Wildlife Service, Bureau of Sport Fisheries and Wildlife.
- Tiner, R.W. 2003. Correlating Enhanced National Wetlands Inventory Data with Wetland Functions for Watershed Assessments: A Rationale for Northeastern U.S. Wetlands. U.S. Fish and Wildlife Service, National Wetlands Inventory Program, Region 5, Hadley, MA.  
[http://www.fws.gov/northeast/wetlands/pdf/CorrelatingEnhancedNWIDataWetlandFunctionsWatershedAssessments\[1\].pdf](http://www.fws.gov/northeast/wetlands/pdf/CorrelatingEnhancedNWIDataWetlandFunctionsWatershedAssessments[1].pdf)
- Toledo, D., M. Sanderson, K. Spaeth, J. Hendrickson, and J. Printz. 2014. Extent of Kentucky bluegrass and its effect on native plant species diversity and ecosystem services in the Northern Great Plains of the United States. *Invasive Plant Science and Management* 7:543-552.
- Umbanhowar, Jr., C.E. 2004. Interactions of climate and fire at two sites in the Northern Great Plains. *Palaeogeography, Palaeoclimatology, and Palaeoecology* 208:141-152.
- U.S. Department of Agriculture, Natural Resources Conservation Service. Glossary of landform and geologic terms. National Soil Survey Handbook, Title 430-VI, Part 629.02c.  
[http://www.nrcs.usda.gov/wps/portal/nrcs/detail/soils/ref/?cid=nrcs142p2\\_054242](http://www.nrcs.usda.gov/wps/portal/nrcs/detail/soils/ref/?cid=nrcs142p2_054242) (accessed 13 April 2016).
- U.S. Fish and Wildlife Service. 2013. Greater sage-grouse (*Centrocercus urophasianus*) conservation objectives: Final report.
- Vance, L., S. Owen, and J. Horton. 2013. Literature review: Hydrology-ecology relationships in Montana prairie wetlands and intermittent/ephemeral streams. Report to the Cadmus Group and the U.S. Environmental Protection Agency. Montana Natural Heritage Program, Helena, MT.
- Van Dyne, G.M., and W.G. Vogel. 1967. Relation of *Selaginella densa* to site, grazing, and climate. *Ecology* 48:438-444.
- Vaness, B.M., and S.D. Wilson. 2007. Impact and management of crested wheatgrass (*Agropyron cristatum*) in the northern Great Plains. *Canadian Journal of Plant Science* 87:1023-1028.
- Vermeire, L.T., J.L. Crowder, and D.B. Wester. 2011. Plant community and soil environment response to summer fire in the northern Great Plains. *Rangeland Ecology & Management* 64:37-46.
- Vermeire, L.T., J.L. Crowder, and D.B. Wester. 2014. Semiarid rangeland is resilient to summer fire and postfire grazing utilization. *Rangeland Ecology & Management* 67:52-60.
- Vuke, S.M., K.W. Porter, J.D. Lonn, and D.A. Lopez. 2007. Geologic map of Montana - information booklet: Montana Bureau of Mines and Geology Geologic Map 62-D.
- Wambolt, C.L., K.S. Walhof, and M.R. Frisina. 2001. Recovery of big sagebrush communities after burning in southwestern Montana. *Journal of Environmental Management*. 61:243-252.
- Watts, M.J., and C.L. Wambolt. 1996. Long-term recovery of Wyoming big sagebrush after four treatments. *Journal of Environmental Management* 46:95-102.
- Whisenant, S.G. 1990. Postfire population dynamics of *Bromus japonicus*. *American Midland Naturalist* 123:301-308.
- Wilson, S.D., and J.M. Shay. 1990. Competition, fire, and nutrients in a mixed-grass prairie. *Ecology* 71:1959-1967.
- With, K.A. 2010. McCown's longspur (*Rhynchophanes mccownii*). In: A. Poole (ed.) *The Birds of North America* (online), Cornell Lab of Ornithology, Ithaca. <http://bna.birds.cornell.edu/bna/species/09>.

## Contributors

Scott Brady  
Stuart Veith

## Approval

Scott Brady, 7/08/2019

## Acknowledgments

This provisional ecological site description could not have been completed without the contributions of Karen Newlon. She conducted an extensive literature review, which provided most of the background information for this project as well as many of the references. She also co-authored the Loamy and Thin Claypan Dry Grassland ecological sites previously prepared in MLRA 52.

A number of USDA-NRCS and USDI-BLM staff supported this project. Staff contributions are as follows:

Soil Concepts, Soils Information, and Field Descriptions  
Charlie French, USDA-NRCS  
Josh Sorlie, USDI-BLM

NASIS Reports, Data Dumps, and Soil Sorts  
Bill Drummond, USDA-NRCS  
Pete Weikle, USDA-NRCS

Peer Review and Beta Testing  
Kirt Walstad, USDA-NRCS  
Kyle Steele, formerly USDA-NRCS  
Kelsey Molloy, USDA-NRCS  
Rick Caquelin, USDA-NRCS  
Josh Sorlie, USDI-BLM  
BJ Rhodes, USDI-BLM

Editing  
Ann Kinney, USDA-NRCS  
Jenny Sutherland, USDA-NRCS

Quality Control  
Kirt Walstad, USDA-NRCS

Quality Assurance  
Stacey Clark, USDA-NRCS

## Rangeland health reference sheet

Interpreting Indicators of Rangeland Health is a qualitative assessment protocol used to determine ecosystem condition based on benchmark characteristics described in the Reference Sheet. A suite of 17 (or more) indicators are typically considered in an assessment. The ecological site(s) representative of an assessment location must be known prior to applying the protocol and must be verified based on soils and climate. Current plant community cannot be used to identify the ecological site.

Author(s)/participant(s)	
Contact for lead author	
Date	

Approved by	
Approval date	
Composition (Indicators 10 and 12) based on	Annual Production

## Indicators

1. **Number and extent of rills:**

---

2. **Presence of water flow patterns:**

---

3. **Number and height of erosional pedestals or terracettes:**

---

4. **Bare ground from Ecological Site Description or other studies (rock, litter, lichen, moss, plant canopy are not bare ground):**

---

5. **Number of gullies and erosion associated with gullies:**

---

6. **Extent of wind scoured, blowouts and/or depositional areas:**

---

7. **Amount of litter movement (describe size and distance expected to travel):**

---

8. **Soil surface (top few mm) resistance to erosion (stability values are averages - most sites will show a range of values):**

---

9. **Soil surface structure and SOM content (include type of structure and A-horizon color and thickness):**

---

10. **Effect of community phase composition (relative proportion of different functional groups) and spatial distribution on infiltration and runoff:**

---

11. **Presence and thickness of compaction layer (usually none; describe soil profile features which may be mistaken for compaction on this site):**

---

12. **Functional/Structural Groups (list in order of descending dominance by above-ground annual-production or live foliar cover using symbols: >>, >, = to indicate much greater than, greater than, and equal to):**

Dominant:

Sub-dominant:

Other:

Additional:

---

13. **Amount of plant mortality and decadence (include which functional groups are expected to show mortality or decadence):**
- 

14. **Average percent litter cover (%) and depth ( in):**
- 

15. **Expected annual annual-production (this is TOTAL above-ground annual-production, not just forage annual-production):**
- 

16. **Potential invasive (including noxious) species (native and non-native). List species which BOTH characterize degraded states and have the potential to become a dominant or co-dominant species on the ecological site if their future establishment and growth is not actively controlled by management interventions. Species that become dominant for only one to several years (e.g., short-term response to drought or wildfire) are not invasive plants. Note that unlike other indicators, we are describing what is NOT expected in the reference state for the ecological site:**
- 

17. **Perennial plant reproductive capability:**
-