

Ecological site PX136X00X870

Lower Piedmont Acidic Upland Woodland, Depth Restriction, Dry

Accessed: 05/10/2025

General information

Provisional. A provisional ecological site description has undergone quality control and quality assurance review. It contains a working state and transition model and enough information to identify the ecological site.

MLRA notes

Major Land Resource Area (MLRA): 136X–Southern Piedmont

This area is in North Carolina (29 percent), Georgia (27 percent), Virginia (21 percent), South Carolina (16 percent), and Alabama (7 percent). It makes up about 64,395 square miles (166,865 square kilometers). (Ag Bulletin 296)

The northeast-southwest trending Piedmont ecoregion comprises a transitional area between the mostly mountainous ecoregions of the Appalachians to the northwest and the relatively flat coastal plain to the southeast. It is a complex mosaic of Precambrian and Paleozoic metamorphic and igneous rocks with moderately dissected irregular plains and some hills. (EPA Ecoregions descriptions)

ADD APPROPRIATE ECOREGION DESCRIPTION(S)

Classification relationships

A PROVISIONAL ECOLOGICAL SITE is a conceptual grouping of soil map unit components within a Major Land Resource Area (MLRA) based on the similarities in response to management. Although there may be wide variability in the productivity of the soils grouped into a Provisional Site, the soil vegetation interactions as expressed in the State and Transition Model are similar and the management actions required to achieve objectives, whether maintaining the existing ecological state or managing for an alternative state, are similar. Provisional Sites are likely to be refined into more precise group during the process of meeting the APPROVED ECOLOGICAL SITE DESCRIPTION criteria.

This PROVISIONAL ECOLOGICAL SITE has been developed to meet the standards established in the National Ecological Site Handbook. The information associated with this ecological site does not meet the Approved Ecological Site Description Standard, but it has been through a Quality Control and Quality Assurance processes to assure consistency and completeness. Further investigations, reviews and correlations are necessary before it becomes an Approved Ecological Site Description.

Ecological site concept

This ecological site occurs on sites with shallow rooting depths so as not to support forest trees. Typically these are over shallow felsic bedrock. Though rock is close to the surface, only a small portion of the ground surface is rock outcrop; most sites have soil available to shallow-rooted plants. This does not include exfoliated granite or related rocks, which support the distinctive communities. These glade and barren sites are usually on upper to mid slopes, are moderately to steeply sloping, and most have a southerly or westerly exposure. However, this type occurs in other setting. For example. Some south and west-facing slopes with extremely infertile soils fail to maintain a forest canopy.

| | |
|------------|--|
| Tree | (1) <i>Quercus prinus</i> (2) <i>Quercus stellata</i> |
| Shrub | (1) <i>Vaccinium pallidum</i> |
| Herbaceous | (1) <i>Schizachyrium scoparium</i> |

Legacy ID

F136XY870GA

Physiographic features

Most of MLRA 136 is in the Piedmont Upland Section of the Piedmont Province of the Appalachian Highlands. A very small part of the MLRA, in central North Carolina, is in the Atlantic Plain Division. A very small part in the Roanoke, Virginia, area is on the eastern edge of the Blue Ridge Province of the Appalachian Highlands. This MLRA is a rolling to hilly upland with a well-defined drainage pattern. The original plateau has been dissected by streams, resulting in narrow to fairly broad upland ridgetops and short slopes. Valley floors are very narrow, and stream terraces are minor. Elevation ranges from 330 to 1,310 feet (100 to 400 m), increasing gradually from south to north.

Geology:

Precambrian and Paleozoic metamorphic and igneous rocks underlie almost all of this MLRA. The dominant metamorphic rock types include biotite gneiss, schist, slate, quartzite, phyllite, and amphibolite. The dominant igneous rock types are granite and metamorphosed granite. Some gabbro and other mafic igneous rocks also occur, and diabase dikes are not uncommon. The Carolina Slate terrane occurs just east of an imaginary centerline in this MLRA. It consists of metamorphic rocks with some metavolcanics and metasediments. Scattered graben basins, which are bounded by faults where the ground between the faults has dropped down, occur from South Carolina to south of Charlottesville and Richmond, Virginia. These basins have Triassic and Jurassic siltstone, shale, sandstone, and mudstone. River valleys have recent alluvium and few terraces.

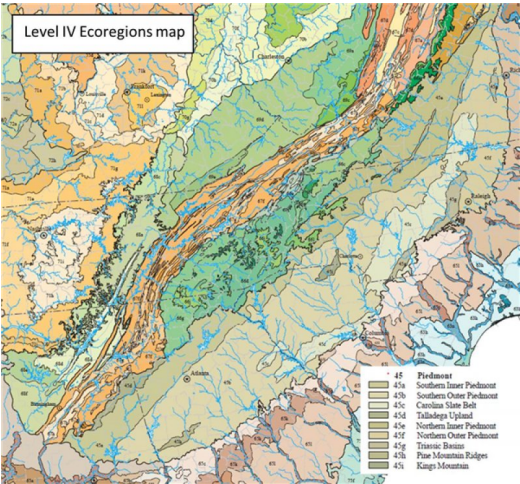


Figure 1. EPA Level IV Ecoregions map.

Table 2. Representative physiographic features

| | |
|--------------------|------------------------------------|
| Landforms | (1) Hill (2) Ridge |
| Flooding frequency | None |
| Ponding frequency | None |
| Aspect | Aspect is not a significant factor |

Climatic features

This ecological site occurs in the thermic temperature regime for MLRA 136. The thermic soil temperature regime has mean annual soil temperatures of 15° C or more, but less than 22 °C; and a difference between mean summer and mean winter soil temperatures of greater than 5 °C at 50 cm below the surface.

The average annual precipitation is 45 to 60 inches (1,145 to 1,525 millimeters) and is as much as 75 inches (1,905 millimeters) in a small, high-elevation area in northeastern Georgia. The precipitation generally is evenly distributed throughout the year. It is lowest in autumn. Most of the rainfall occurs as high-intensity, convective thunderstorms during the growing season. Significant moisture also comes from the movement of warm and cold fronts across the MLRA from November to April. High amounts of rain can occur during hurricanes at the same time of the year. Snowfall typically is light. The average annual temperature is 53 to 64 degrees F (12 to 18 degrees C). The freeze-free period averages 230 days and ranges from 185 to 275 days. Both the mean annual temperature and length of the freeze-free period increase from north to south and with decreasing elevation.

Table 3. Representative climatic features

| | |
|-------------------------------|----------|
| Frost-free period (average) | 195 days |
| Freeze-free period (average) | 225 days |
| Precipitation total (average) | 52 in |

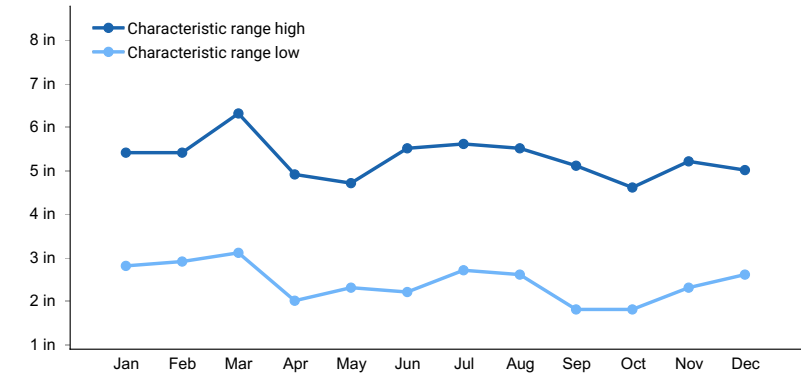


Figure 2. Monthly precipitation range

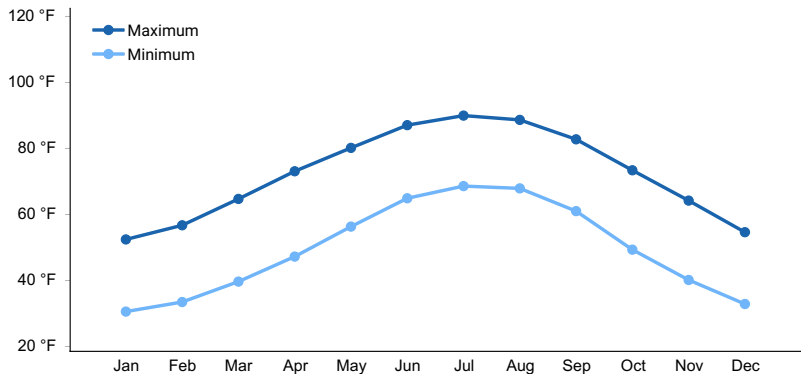


Figure 3. Monthly average minimum and maximum temperature

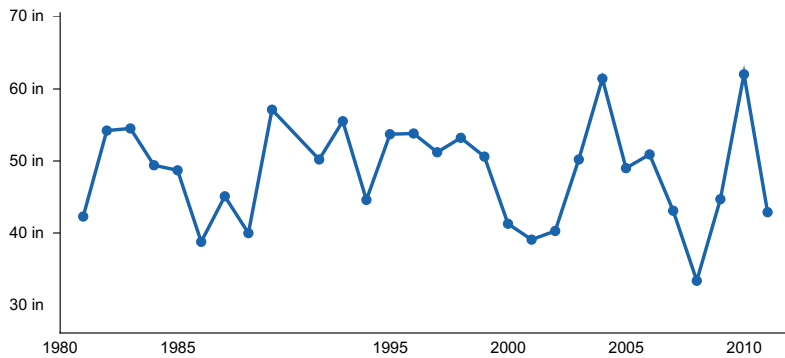


Figure 4. Annual precipitation pattern

Climate stations used

- (1) ASHLAND 3 ENE [USC00010369], Ashland, AL
- (2) COVINGTON [USC00092318], Covington, GA
- (3) EXPERIMENT [USC00093271], Griffin, GA
- (4) GAINESVILLE [USC00093621], Gainesville, GA
- (5) MILLEDGEVILLE [USC00095874], Milledgeville, GA
- (6) WEST POINT [USC00099291], Lanett, GA
- (7) ATHENS BEN EPPS AP [USW00013873], Athens, GA
- (8) CHARLOTTE DOUGLAS AP [USW00013881], Charlotte, NC
- (9) COLUMBUS METRO AP [USW00093842], Columbus, GA
- (10) ROCKFORD 3 ESE [USC00017020], Rockford, AL
- (11) ALBEMARLE [USC00310090], Albemarle, NC
- (12) SALISBURY [USC00317615], Salisbury, NC
- (13) SILER CITY 2 N [USC00317924], Siler City, NC
- (14) NEWBERRY [USC00386209], Newberry, SC
- (15) CARROLLTON [USC00091640], Carrollton, GA
- (16) DALLAS 7 NE [USC00092485], Dallas, GA
- (17) ASHEBORO 2 W [USC00310286], Asheboro, NC
- (18) CHESNEE 7 WSW [USC00381625], Chesnee, SC
- (19) CLEMSON UNIV [USC00381770], Clemson, SC
- (20) GREENWOOD [USC00383754], Greenwood, SC
- (21) CHASE CITY [USC00441606], Chase City, VA
- (22) SIMMS WTP [USC00387885], Chesnee, SC
- (23) CROZIER [USC00442142], Maidens, VA
- (24) HICKORY FAA AP [USW00003810], Hickory, NC

Influencing water features

Soil features

This ecological site occurs within the thermic soil temperature regime, which is defined as: The mean annual soil temperature is 15 degrees C or higher but lower than 22 degrees C, and the difference between mean summer and mean winter soil temperatures is 6 degrees C. Soils are well and moderately well drained and have a restrictive layer within 100 cm (40 inches) of the soil surface. They have a fine-silty, loamy, or loamy-skeletal particle size family. Dominant soil components are the Callison, Cliffside, Lockhart, Misenheimer, and Musella soil series.

Table 4. Representative soil features

| | |
|--------------------|--|
| Surface texture | (1) Gravelly silt loam (2) Cobbly sandy loam (3) Stony clay loam |
| Drainage class | Moderately well drained to well drained |
| Permeability class | Moderately rapid to very slow |

| | |
|--|------------|
| Soil depth | 10 in |
| Available water capacity (0-40in) | 1–6 in |
| Calcium carbonate equivalent (0-40in) | 0% |
| Electrical conductivity (0-40in) | 0 mmhos/cm |
| Sodium adsorption ratio (0-40in) | 0 |
| Soil reaction (1:1 water) (0-40in) | 4.5–6.1 |
| Subsurface fragment volume <=3" (Depth not specified) | 0–30% |
| Subsurface fragment volume >3" (Depth not specified) | 0–30% |

Ecological dynamics

This ecological site is associated with soils sufficiently thin rooting volumes of soil so as not to support forest trees. Typically these are over shallow felsic bedrock. These glade and barren sites are usually on upper to mid slopes, are moderately to steeply sloping, and most have a southerly or westerly exposure. However, this type occurs in other setting. Some south and west-facing slopes with extremely infertile soils fail to maintain a forest canopy. In addition, this type can occasionally occurs over acidic clay pans in flat terrain of the Piedmont.

Fires played an important role in maintaining this community historically. With frequently dry conditions and a grassy herbaceous layer, such sites were susceptible to fire. The routine use of fire by Native Americans, coupled with periodic lightning-induced fires, reduced the growth and reproduction of woody plants, resulting in an open canopy of widely spaced trees and a conspicuously dense herbaceous layer. Over the last century, fire suppression has promoted the growth and regeneration of trees such that the forest today typically has a more closed canopy and a less developed herbaceous layer than in the past.(Spira, 2011)

State and transition model

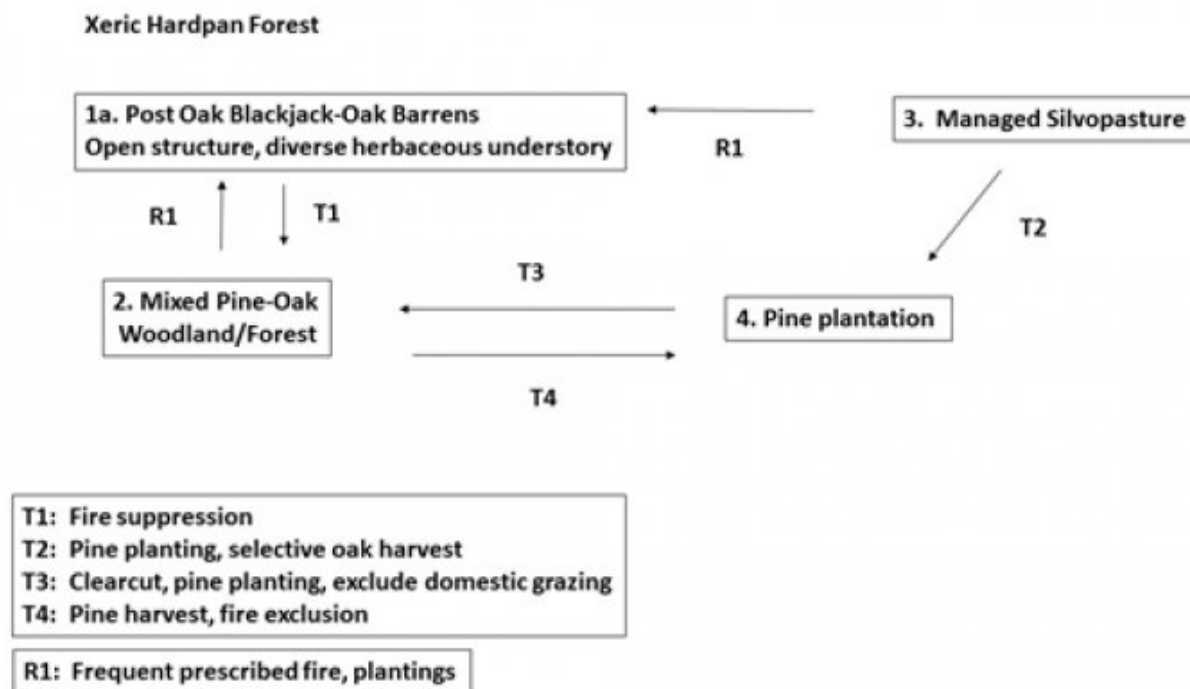


Figure 6. state and transition model

Other references

Edwards, L., J. Ambrose, and L.K. Kirkman. 2013. *The Natural Communities of Georgia*. The University of Georgia Press. Athens and London.

Environmental Protection Agency (EPA). 2004. Level III and IV Ecoregions of EPA Region 4. U.S. Environmental Protection Agency, National Health and Environmental Effects Research Laboratory. Western Ecology Division, Corvallis, Oregon. Scale 1:2,000,000.

Fleming, Gary P. and Karen D. Patterson. 2013. Natural Heritage Report 13-16. Natural Communities of Virginia: Ecological Groups and Community Types. Virginia Department of Conservation and Recreation, Division of Natural Heritage, Richmond, Virginia. 36 pages.

NatureServe. 2013. NatureServe Explorer: An online encyclopedia of life [web application]. Version 7.1. NatureServe, Arlington, Virginia. Available <http://www.natureserve.org/explorer>. (Accessed May 24, 2013).

Nelson, John B. 1986. *The natural Communities of South Carolina: Initial Classification and Description*. South Carolina Wildlife and Marine Resources Department.

Schafale, M. P. 2012. *Classification of the natural communities of North Carolina, 4th Approximation*. North Carolina Department of Environment, Health, and Natural Resources, Division of Parks and Recreation, Natural Heritage Program, Raleigh.

Schafale, M. P., and A. S. Weakley. 1990. *Classification of the natural communities of North Carolina. Third approximation*. North Carolina Department of Environment, Health, and Natural Resources, Division of Parks and Recreation, Natural Heritage Program, Raleigh. 325 pp.

Skeen, J. N., M. E. B. Carter, and H. L. Ragsdale. 1980. Yellow-poplar: The Piedmont case. *Bulletin of the Torrey Botanical Club* 107:1-6.

Spira, Timothy P. 2011. *Wildflowers and Plant Communities of the Southern Appalachian Mountains and Piedmont*. The University of North Carolina Press. Chapel Hill.

United States Department of Agriculture, Natural Resources Conservation Service, 2006. Land Resource Regions and Major Land Resource Areas of the United States, the Caribbean, and the Pacific Basin. U.S. Department of Agriculture Handbook 296.

Wharton, C.H. 1978. The natural environments of Georgia. Bulletin 114. Georgia Department of Natural Resources. Atlanta. Schafale, M. P. 2012. Classification of the natural communities of North Carolina, 4th Approximation. North Carolina Department of Environment, Health, and Natural Resources, Division of Parks and Recreation, Natural Heritage Program, Raleigh.

United States Department of Agriculture, Natural Resources Conservation Service. 2006. Land Resource Regions and Major Land Resource Areas of the United States, the Caribbean, and the Pacific Basin. U.S. Department of Agriculture Handbook 296.

Rangeland health reference sheet

Interpreting Indicators of Rangeland Health is a qualitative assessment protocol used to determine ecosystem condition based on benchmark characteristics described in the Reference Sheet. A suite of 17 (or more) indicators are typically considered in an assessment. The ecological site(s) representative of an assessment location must be known prior to applying the protocol and must be verified based on soils and climate. Current plant community cannot be used to identify the ecological site.

| | |
|---|-------------------|
| Author(s)/participant(s) | |
| Contact for lead author | |
| Date | |
| Approved by | |
| Approval date | |
| Composition (Indicators 10 and 12) based on | Annual Production |

Indicators

1. Number and extent of rills:

2. Presence of water flow patterns:

3. Number and height of erosional pedestals or terracettes:

4. Bare ground from Ecological Site Description or other studies (rock, litter, lichen, moss, plant canopy are not bare ground):

5. Number of gullies and erosion associated with gullies:

6. Extent of wind scoured, blowouts and/or depositional areas:

7. **Amount of litter movement (describe size and distance expected to travel):**
-
8. **Soil surface (top few mm) resistance to erosion (stability values are averages - most sites will show a range of values):**
-
9. **Soil surface structure and SOM content (include type of structure and A-horizon color and thickness):**
-
10. **Effect of community phase composition (relative proportion of different functional groups) and spatial distribution on infiltration and runoff:**
-
11. **Presence and thickness of compaction layer (usually none; describe soil profile features which may be mistaken for compaction on this site):**
-
12. **Functional/Structural Groups (list in order of descending dominance by above-ground annual-production or live foliar cover using symbols: >>, >, = to indicate much greater than, greater than, and equal to):**
- Dominant:
- Sub-dominant:
- Other:
- Additional:
-
13. **Amount of plant mortality and decadence (include which functional groups are expected to show mortality or decadence):**
-
14. **Average percent litter cover (%) and depth (in):**
-
15. **Expected annual annual-production (this is TOTAL above-ground annual-production, not just forage annual-production):**
-
16. **Potential invasive (including noxious) species (native and non-native). List species which BOTH characterize degraded states and have the potential to become a dominant or co-dominant species on the ecological site if their future establishment and growth is not actively controlled by management interventions. Species that become dominant for only one to several years (e.g., short-term response to drought or wildfire) are not invasive plants. Note that unlike other indicators, we are describing what is NOT expected in the reference state for the ecological site:**
-

17. **Perennial plant reproductive capability:**
